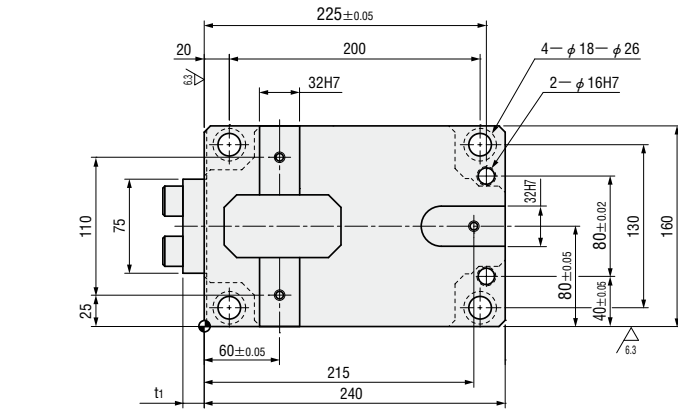


V SHAPE GUIDE FLYING CAM UNITS FOR TRIM & FLANGE

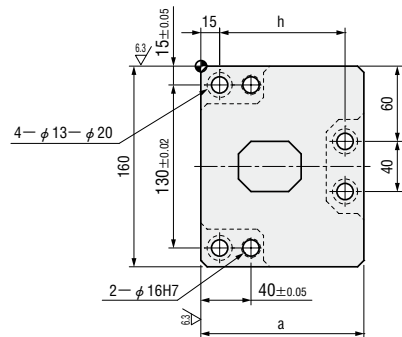
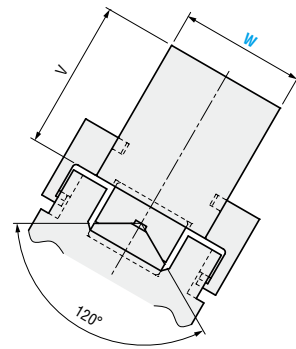
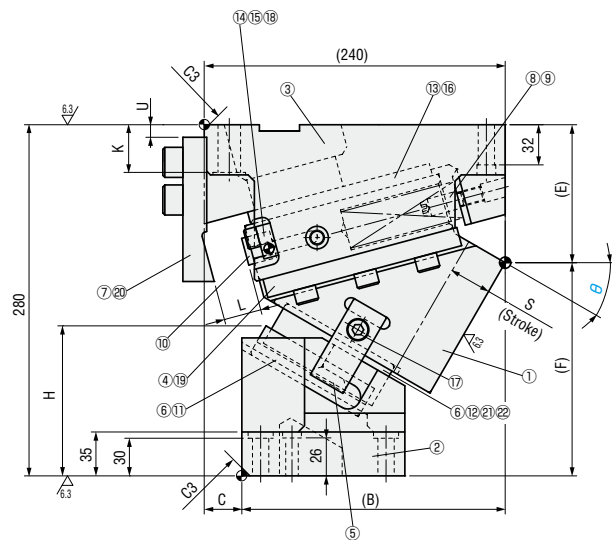
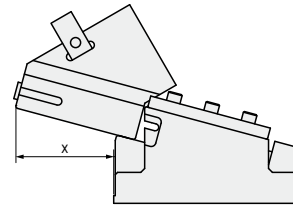
—MGFVT • MEVTN—



MGFVT100 ($\theta=00-70$)
MEVTN100 ($\theta=00-70$)
(Economy type)



■ Rear removal space



■ Components table P.1257

W	θ	B	C	E	F	H	K	L	U	V	a	h	t ₁	x
100	00	160	80	85	195	90	38	40	55	100	140	110	17	83
	10	180	60	90	190	100			35					96
	20	190	50	110	170	109.5			15					116
	30	210	30		120	120	10	127						
	40	230	10	115	165		145.3	30	10	120	90	17	130	
	50			160	153.6	25	0			140	110	80	16	142
	60	179.3	20	0	140			110	80					16
70	179.3	20				0	140			110	80	16	132	

Slide Stroke S	Working force KN (tonf)		Spring load N (kgf)			Total weight kg	Catalog No.	W	θ							
	Standard working force	Max. working force	Preload	5mm before bottom dead center	Max. load											
28.3	44.1 (4.5)	88.3 (9.0)	315(32.1)	2388(243.5)	2835(289.1)	49.4	MGFVT MEVTN (Economy type)	100	00							
33.3				2457(250.5)					47.3	10						
30.9				221(22.5)					2193(223.7)	2576(262.7)	47.2	20				
33.5				176(18.0)					2822(287.8)	2426(247.3)	2487(253.6)	46.5	30			
39.0													2540(259.0)	2602(265.3)	43.6	40
46.7																44.9
60.0													44.2	60		
58.5	552(56.3)	2572(262.3)	2760(281.4)		44.2	70										

Order Days to Ship **Quotation**

Price **Quotation**

Alterations

Alterations	Code	Spec.
	K	Add 3 locating keys (With 3 hexagon socket head cap screws M8×15)
	KA	Add 3 stepped locating keys (With 3 hexagon socket head cap screws M8×15)