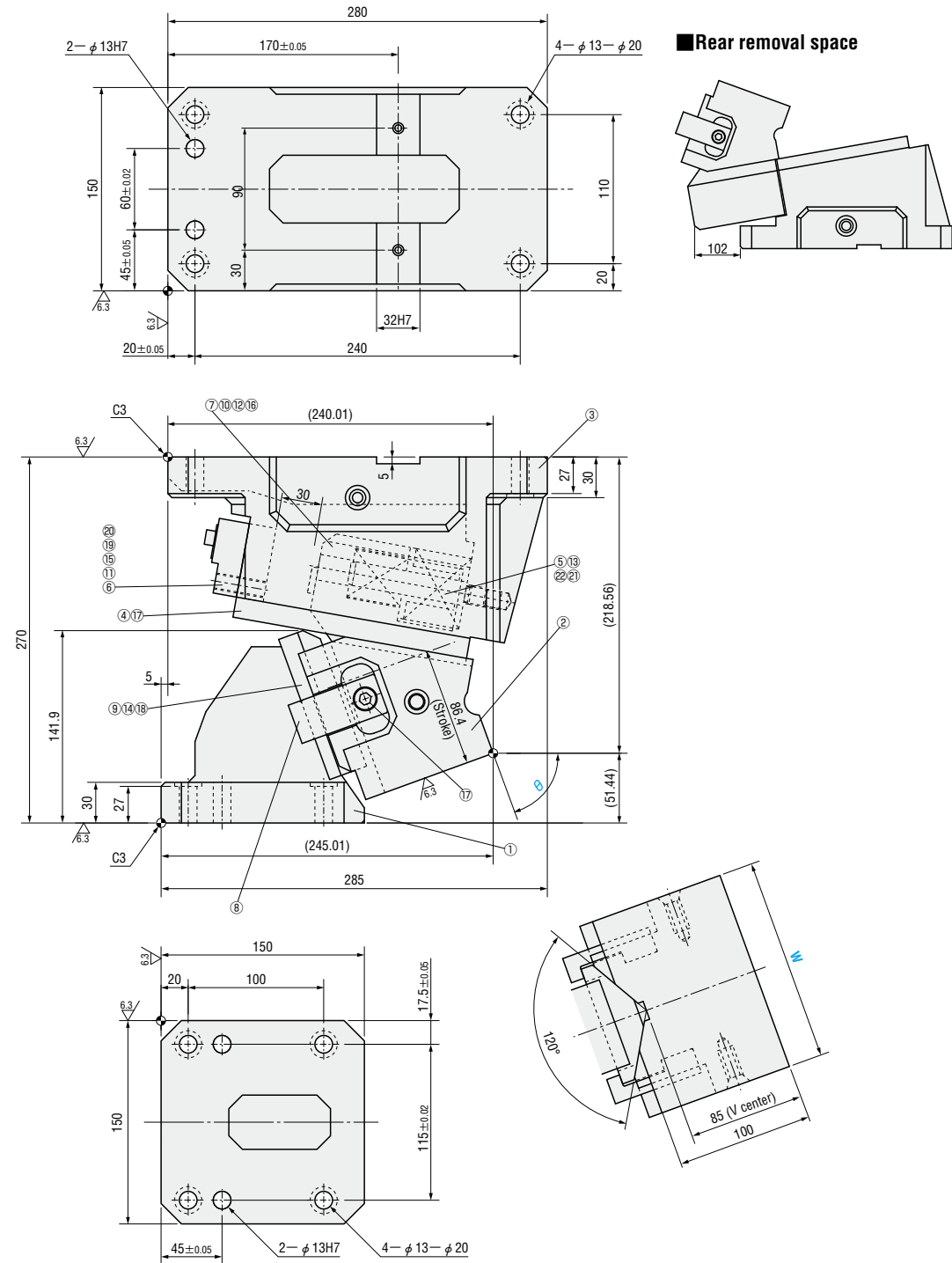


# FLYING CAM UNITS FOR HEAVY LOAD PIERCE

—MGFVS · MEVSN—

— Without automatic alignment —  
**MGFVS150-70**  
**MEVSN150-70**  
(Economy type)



■ Components table P.1190

Slide Stroke S	Working force KN (tonf)		Spring load N (kgf)			Total weight kg	Catalog No.	W	θ
	Standard working force	Max. working force	Preload	5mm before bottom dead center	Max. load				
86.4	123.6 (12.6)	185.3 (18.9)	753 (76.7)	8306 (846.9)	9555 (974.3)	43.5	— Without automatic alignment — <b>MGFVS</b> <b>MEVSN</b> (Economy type)	150	70

Order **Catalog No.** **W** - **θ**  
**MGFVS** **150** - **70**

Days to Ship **Quotation**

Price **Quotation**

Alterations **Catalog No.** **W** - **θ** - (N12 · N16 · etc.)  
**MGFVS** **150** - **70** - **TK**

Alterations	Code	Spec.
φ12H7 or φ16H7	N12 N16	Change dowel hole diameter φ13H7 ⇨ φ12H7 Change dowel hole diameter φ13H7 ⇨ φ16H7
Plate Screw Nut	S	With collars, screws and nuts to fix bottom dead center.
	K	Add 2 locating keys (With 2 hexagon socket head cap screws M8×15)
	TK	T-keywaying Add 6 locating keys (With 6 hexagon socket head cap screws M8×15)