

# PANEL INPUT DETECTORS

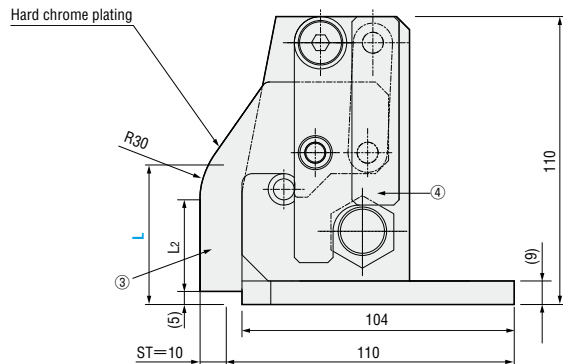
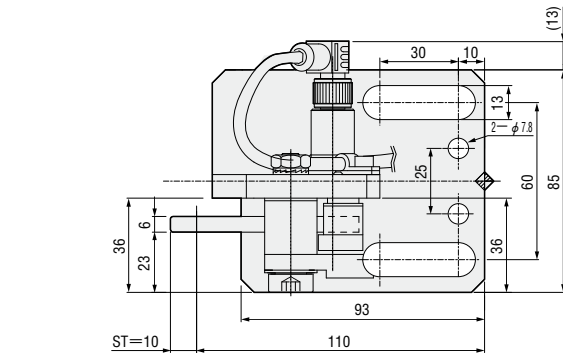
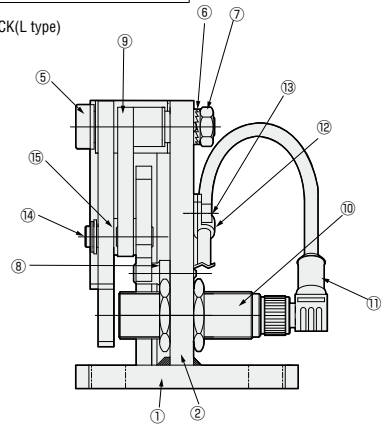
— LINK TYPE(WITHOUT GUIDE PLATE)—



Photograph: PLGRCK (R type)

PLGLCK (L type)  
PLGRCK (R type)

Figure: PLGLCK(L type)



### Components

No.	Name	Quantity	Remarks
①	Body of gauge (Base)	1	Equivalent to SS400
②	Body of gauge (Support)	1	Equivalent to SS400
③	Detection lever	1	Equivalent to SS400
④	Detection plate	1	Equivalent to SS400
⑤	Shoulder bolt	1	MSB12
⑥	Nord-Lock	1	NLDP8
⑦	Nut	1	KNTR8
⑧	Stopper	1	Equivalent to SUJ2, HRC50~

No.	Name	Quantity	Remarks
⑨	Link	1	SS400
⑩	Proximity sensor	1	IG0348 (Product of EFECTOR)
⑪	Sensor cable	1	E10200 (Product of EFECTOR)
⑫	Cable clamp	1	UC-0.5
⑬	Hexagon socket head cap bolt	1	CB4-10
⑭	Operating pin	1	Equivalent to SUJ2, HRC50~
⑮	Operating pin	1	Equivalent to SUJ2, HRC50~

L2	Catalog No. Type	L	Order
(35)	L type PLGLCK	50	Days to Ship
(55)	R type PLGRCK	70	
(75)		90	

Catalog No. — L  
PLGLCK — 50

Quotation

Quotation

Alterations Catalog No. — L — (STC...etc)  
PLGLCK — 50 — CLC

Alterations	Code	Spec.
	STC	Detection lever stroke length ST change ST=10→5mm

Alterations	Code	Spec.
Cable length change	CLC	Cable length is changed from 5m to 10m.
Without sensor Without sensor cable	SCN	Proximity sensor and sensor cable are not provided.

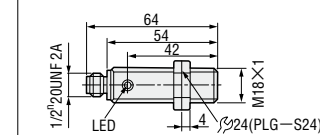
### Features

- It adopts the method which only detects the panel, and lower cost is achieved by cancelling stopper units.
- Horizontal movement of detection lever: Unlike conventional rocking detection levers, the lever is unaffected by variations in the panel position and provides stable detection.
- Smooth movement: The link type achieves better performance and lower cost than slide rail type.
- Proximity sensor
  - The connector-type proximity sensor can be installed and removed easily, facilitating maintenance.
  - Use corresponding AC/DC sensor (20V~250V)
  - Baseplate mounting: Because the relief distance for the upper die can be reduced, the strength loss of the upper die is reduced.

### Specifications of proximity sensor and cable

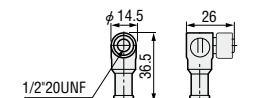
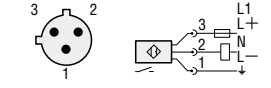
Proximity sensor: (EFECTOR)  
Model: IG0348  
Power supply: AC/DC 20~250  
Ambient temperature: -25~+80°C

Sensor cable: (EFECTOR)  
Model: E10200(5M)  
Max. power: AC250 DC300



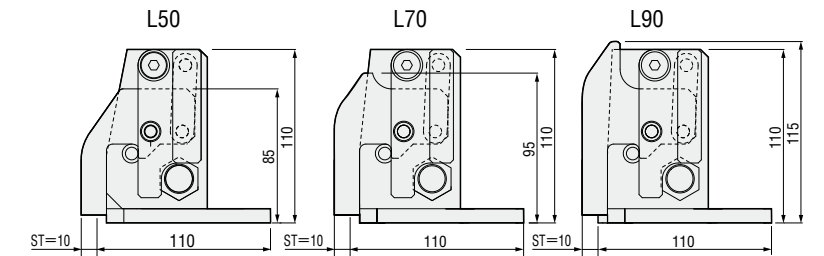
CCC CE C UL US LISTED

### Wiring diagram



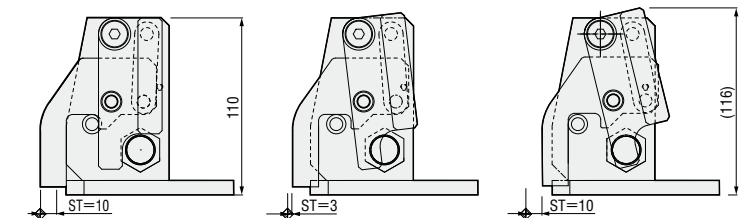
※Cable size and color are subject to change without any prior notice.

### Shape and size of panel input detector



### Material feeding diagram

ST=10



Before feeding

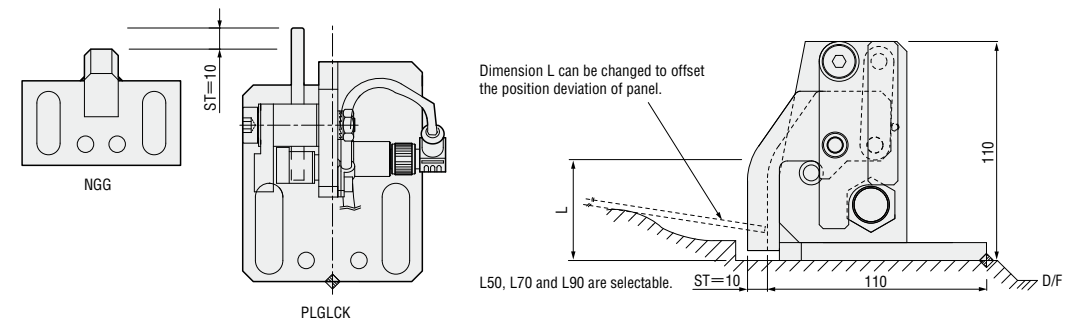
Detection location

On feeding

※ The initial stroke of detection is approx. 3mm, which reduces detection errors caused by plate variations.



Use guide frame made of conventional material and only adopt the method which detects the panel.



L50, L70 and L90 are selectable. ST=10 110 D/F