

GUIDE POSTS FOR DIE SETS

RoHS

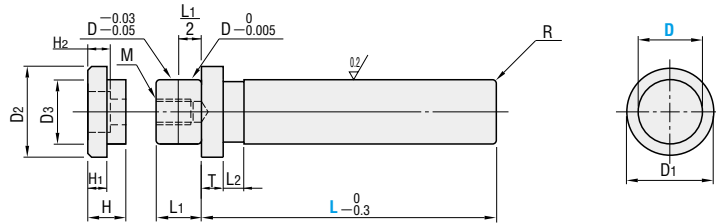
—Detachable post type—



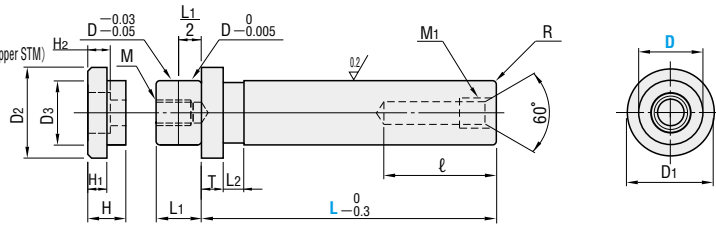
—Press-fit post type—



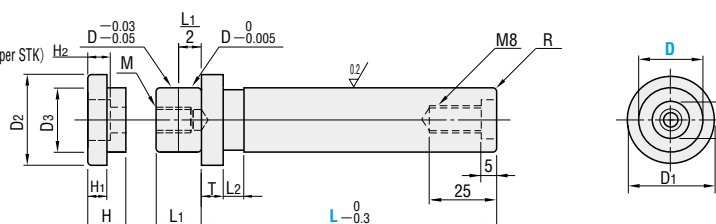
MRP



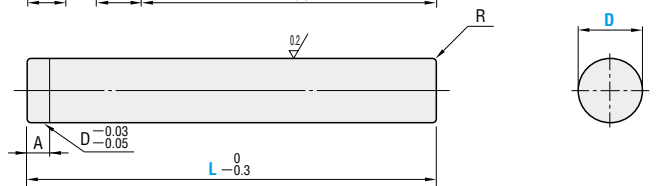
BRPM
(For movable stopper STM)



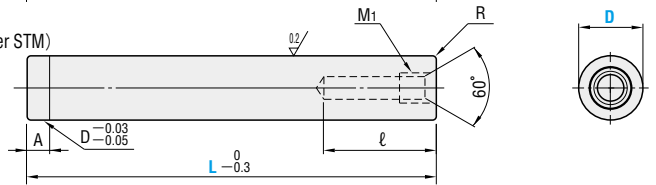
BRPK
(For fixed stopper STK)



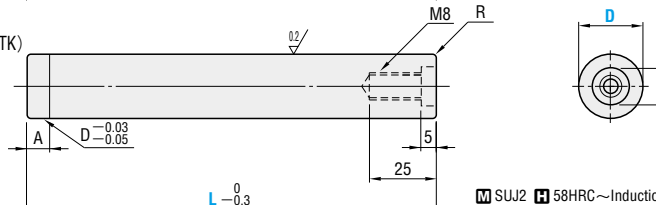
MSP



BSPM
(For movable stopper STM)



BSPK
(For fixed stopper STK)



M SUJ2 H 58HRC~Induction hardening (Depth 1.5~2.0mm)

D	D ₁	T	L ₁	L ₂	ℓ	M ₁ ×P	d	A	M	R	D ₂	D ₃	H	H ₁	H ₂	△ Provided bolt
20		29	5	15	38	M10×1.5	14	4	M8×18	2.0	28	19.5	14	7	8.5	CB 8—25
22	+0.020	31	8	16	42	M12×1.5	14	5	M10×22	3.5	30	21.5	16	8	10.5	CB10—30
25	+0.015	36	18	50	35						24.5					
28	+0.025	39	20	60	40						31.5					
32	+0.020	44	10	23	60	M16×1.5	20	6	M12×27	4.0	49	37.5	18	10	12.5	CB12—35
38	+0.030	53	12	27	55						44.5					
45	+0.025	59	32	32	62						49.5					
50	+0.035	69	15	35	70	M14×31	20	7	M14×31	5.0	62	49.5	20	12	14.5	CB14—40
60	+0.030	79	42	70	72						59.5					

Catalog No. Type	D	L								Base unit price 1~9 pieces						
		80	90	100	110	120	130	140	150	160	MRP	BRPM-BRPK				
MRP	20															
	22															
	25															
BRPM	28															
BRPK	32															
	38															
	45															
	50															
	60															

Catalog No. Type	D	L								Base unit price 1~9 pieces						
		100	110	120	130	140	150	160	170	180	MSP	BSPM-BSPK				
MSP	20															
	22															
	25															
BSPM	28															
	32															
BSPK	38															
	45															
	50															
	60															



Catalog No. — L
BSPM 32 — 180



Days to Ship **Quotation**

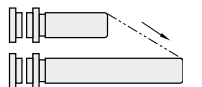


Price **Quotation**



Catalog No. — L(LC)
MRP 20 — LC77
Quotation

Long type guide posts with configurable full length are listed on P.929.



Alteration	Code	Spec.	1Code					
			D	MRP-MSP BSPM-BSPK	BRPM- BRPK			
MRP-BRPM-BRPK	LC	L dimension change 1mm increments						
MSP-BSPM-BSPK	LC	L dimension change 1mm increments						

Quotation

GUIDE POSTS & BUSHINGS FOR DIE SETS