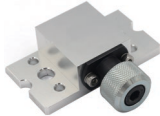


NEW

QUICK CHANGER
QUICK CHANGER

MQCL15R-Y

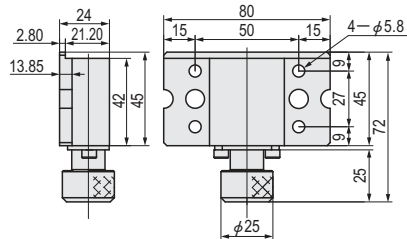


MQCL15G-Y

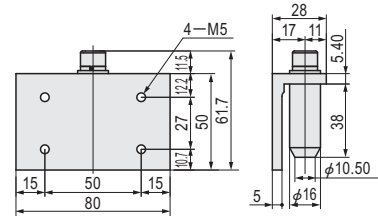


M Material	S Surface treatment
Aluminum product	Anodizing

MQCL15R-Y (Robot side)



MQCL15G-Y (Grip side)



MQCL15R-S

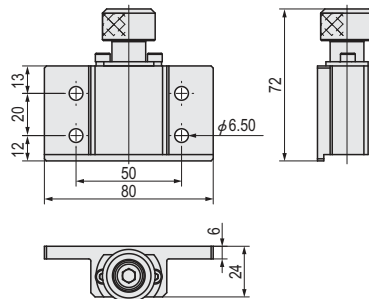


MQCL15G-S

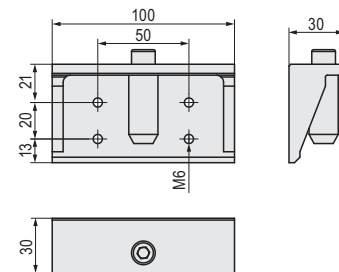


M Material	S Surface treatment
Aluminum product	Anodizing

MQCL15R-S (Robot side)



MQCL15G-S (Grip side)

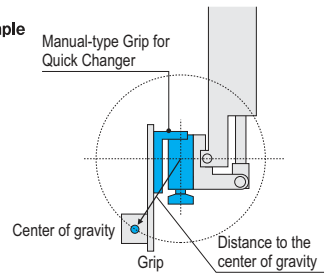


Part Number	Weight (g)	Combined load weight (kg)
MQCL15R-Y	185	15
MQCL15G-Y	294	
MQCL15R-S	190	
MQCL15G-S	197	



Example

Manual-type Grip for Quick Changer



Order

Part Number

MQCL15R-Y



Price

Quotation



Days to Ship

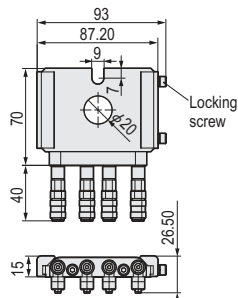
Quotation

Manual Quick Changer

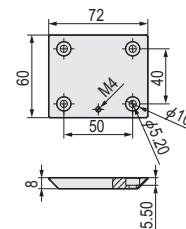


M Material	S Surface treatment
Aluminum product	Anodizing

MQCS-R-60 (Robot side)



MQCS-G-60 (Grip side)



- This product is used for the purpose of quick switching and it is to be installed at Grip and robots area. Note that It may not be compatible to assemble with other products.
- When tightening, the gap is controlled to be less than 1mm.
- The surface is anodized, and the color of the actual product may vary from the product picture.

Part Number	Load (N)	Weight (g)
MQCS-R-60	70	148
MQCS-G-60	70	79



Order

Part Number

MQCS-R-60



Days to Ship

Quotation



Price

Quotation