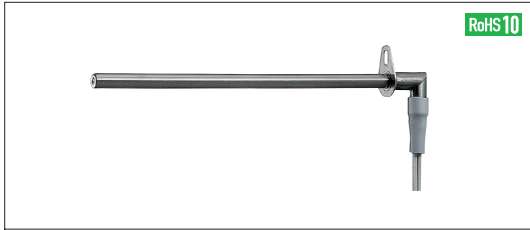
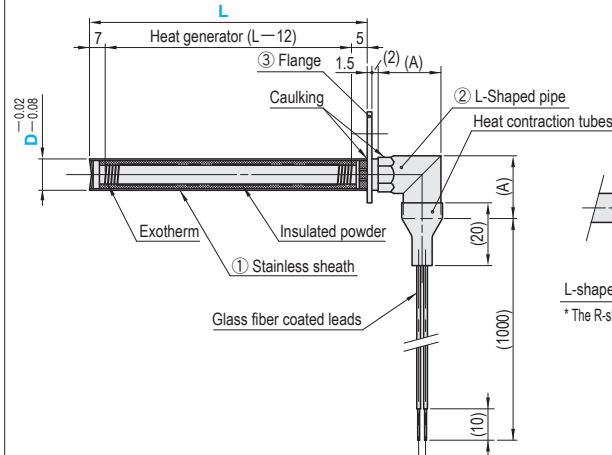


CARTRIDGE HEATERS - L FORM TYPE

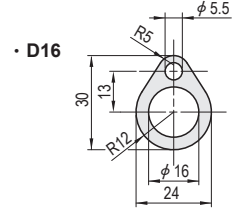
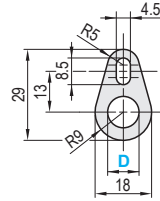
-L, W, FLANGE SELECTION TYPE-



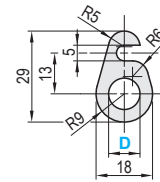
MLCHN (No flange)
MLCHA (Flange shape A)
MLCHB (Flange shape B)
MLCHC (Flange shape C)



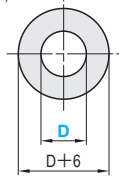
MLCHA
 (Flange shape A)
 • D8~12



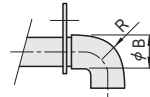
MLCHB
 (Flange shape B)



MLCHC
 (Flange shape C)



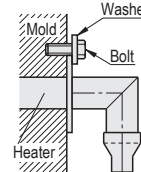
Installation Example for MLCHC (Flange shape C)



L-shaped pipe (φ 8, φ 10, φ 12)

* The R-shape is difference between φ 8, 10, 12 and φ 16.

- ① Stainless sheath
- ② L-Shaped pipe
- ③ Flange
- M SUS304
- Lead heat resistance temperature 180°C



- ①: Install flange in between washer and bolt.
- ②: Available to freely decide and set the bolt position

Watt density (W/cm ²)	A	B	Part Number		L 1 mm increments	V (Voltage) selection	W (Wattage) 10W increments
			Type	D			
2 ≤ W/cm ² ≤ 15 W/cm ² = W / {D × (L - 12) × 3.14 / 100}	22	12	MLCHN (No flange)	8	50~400	200 220	50~1100
			MLCHA (Flange shape A)	10			50~1600
	MLCHB (Flange shape B)	12	50~1800				
	MLCHC (Flange shape C)	* 16					
	24	18.5					

⚠ Specify the wattage such that the W density (W/cm²) is within the range 2 ≤ W/cm² ≤ 15. ✖ * MLCHB Not available for D16

Order

Part Number — L — V — W

MLCHN8 — 150 — V200 — W400
 MLCHA12 — 300 — V220 — W1400
 MLCHB10 — 200 — V200 — W600

Alterations

Part Number — L — V — W — (JC · M4 · G4)

MLCHN8 — 200 — V200 — W600 — JC2
 MLCHB10 — 400 — V220 — W1300 — JC2 — M4

Days to Ship

Quotation

P Price

Part Number	Unit Price (1~9 pcs)												
	Type	D	L50	L101	L151	L201	L251	L301	L351	L401	L451	L501	L551
MLCHN (No flange)	8												
	10												
	12												
	16												
MLCHA (Flange shape A)	8												
	10												
	12												
	16												
MLCHB (Flange shape B)	8												
	10												
	12												
	16												
MLCHC (Flange shape C)	8												
	10												
	12												
	16												

Quotation

Alterations	Code	Spec.	1Code	
	JC	Change the length of the lead wire.		
		Specification method		Lead wire length (mm)
		JC2		2000
JC3	3000			
	M4	Fit round crimped terminal (M4) onto lead wire.	Quotation	
	G4	Fit Y-type crimped terminal (M4) onto lead wire.		

⚠ D16 is for MLCHN, MLCHA and MLCHC.