

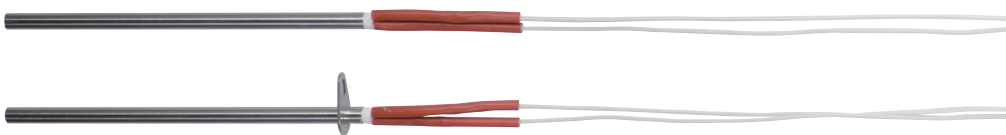
NEW

CARTRIDGE HEATERS

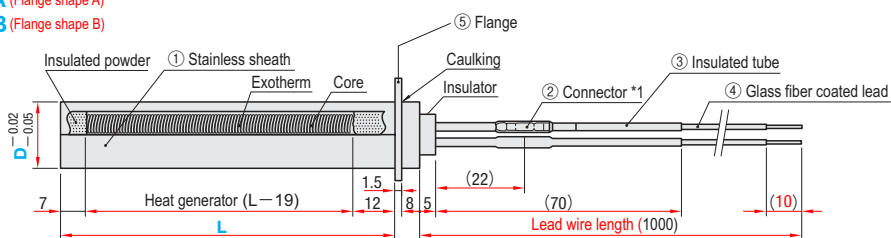
HIGH WATTAGE CARTRIDGE HEATER

— L DIMENSION / WATTAGE / FLANGE SELECTION —

RoHS



MSCHWN (No flange)
MSCHWA (Flange shape A)
MSCHWB (Flange shape B)



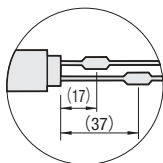
MSCHWA (Flange shape A)

MSCHWB (Flange shape B)

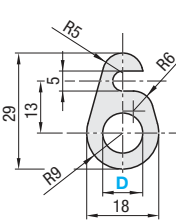
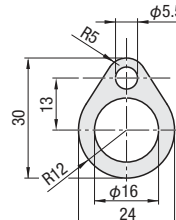
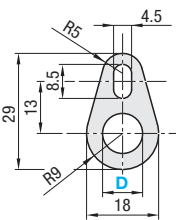
•D8~12

•D16

- ① Stainless sheath
- ⑤ Flange
- M Material SUS304
- ② ③ ④ Heat proof temperature: below 180°C



*1 Connector position (22) becomes two separate positions (17) and (37) for two connectors for D8.



W/cm ² (Watt density)	Part Number		L 1mm increments	V (Voltage) selection	W (Wattage) 10W increments
	Type	D			
15 ≤ W/cm ² ≤ 60 W/cm ² = W / {D × (L - 19) × 3.14 / 100}	MSCHWN (No flange)	8	50~400	200 220	140~3000
	MSCHWA (Flange shape A)	10			170~3750
	MSCHWB (Flange shape B)	12			200~5000
		16	50~600		

① Specify the wattage such that the Watt density (W/cm²) is within the range 15 ≤ W/cm² ≤ 60. ⊗ MSCHWB is not available for D16.

② MSCHWB: Available for D8 to 12.



Order

Part Number	L	V	W
MSCHWN8	150	V200	W560
MSCHWA16	300	V220	W4940
MSCHWB10	200	V200	W3400



Alterations



Part Number	L	V	W	(JC)
MSCHWN 8	200	V200	W600	JC2



Days to Ship

Quotation



Price

Quotation

Alterations	Code	Spec.	1Code	
	JC	Change the length of the lead wire.		
		Designation method	Lead wire length (mm)	Quotation
		JC2	2000	
JC3	3000			