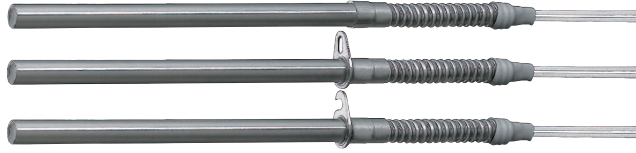


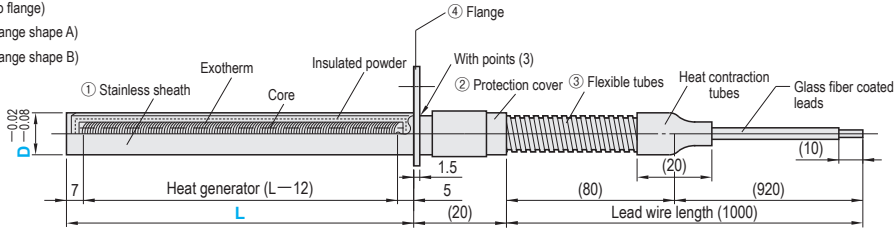
CARTRIDGE HEATERS

-L, W, FLANGE SELECTION TYPE • LEAD PROTECTION COVER-

RoHS10



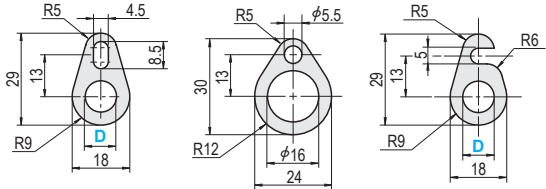
MJCHN (No flange)
MJCHA (Flange shape A)
MJCHB (Flange shape B)



MJCHA (Flange shape A) • D8~12
MJCHB (Flange shape B) • D16

- ① Stainless sheath
 - ② Protection cover
 - ③ Flexible tubes
 - ④ Flange
- M** SUS304
 Lead heat resistance temperature 180°C

Installation method of flange is caulking or welding (3 points).



Watt density (W/cm ²)	Part Number		L 1 mm increments	V (Voltage) selection	W (Wattage) 10W increments
	Type	D			
$2 \leq W/cm^2 \leq 15$ $W/cm^2 = W / (D \times (L - 12) \times 3.14 / 100)$	MJCHN (No flange)	8	50~400	200 220	50~1100
	MJCHA (Flange shape A)	10			50~1600
	MJCHB (Flange shape B)	12			50~1800
	MJCHN (No flange)	* 16	50~600	50~2000	
	MJCHA (Flange shape A)				

Specify the wattage such that the W density (W/cm²) is within the range $2 \leq W/cm^2 \leq 15$. * MJCHB: Not available for D16



Order

Part Number	L	V	W
MJCHN8	150	V200	W400
MJCHA12	300	V220	W1400
MJCHB10	200	V200	W600



Days to Ship

Quotation



Alterations

Part Number	L	V	W	(JC • M4 • G4)
MJCHN8	200	V200	W 600	JC2
MJCHB10	400	V220	W1400	JC2 -M4

Alterations	Code	Spec.	1Code
	JC	Change the length of the lead wire. Specification method Lead wire length (mm) JC2 2000 JC3 3000	Quotation
	M4	Fit round crimped terminal (M4) onto lead wire.	
	G4	Fit Y-type crimped terminal (M4) onto lead wire.	



Price

Quotation

Part Number	Unit Price (1~9 pcs)													
		Type	D	L50	L101	L151	L201	L251	L301	L351	L401	L451	L501	L551
MJCHN (No flange)	8													
	10													
	12													
	16													
MJCHA (Flange shape A)	8													
	10													
	12													
MJCHB (Flange shape B)	10													
	16													

D16 is for MJCHN and MJCHA.