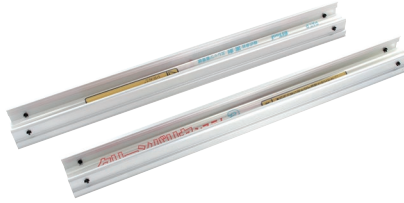


■ Clean Barrier System 2/2A

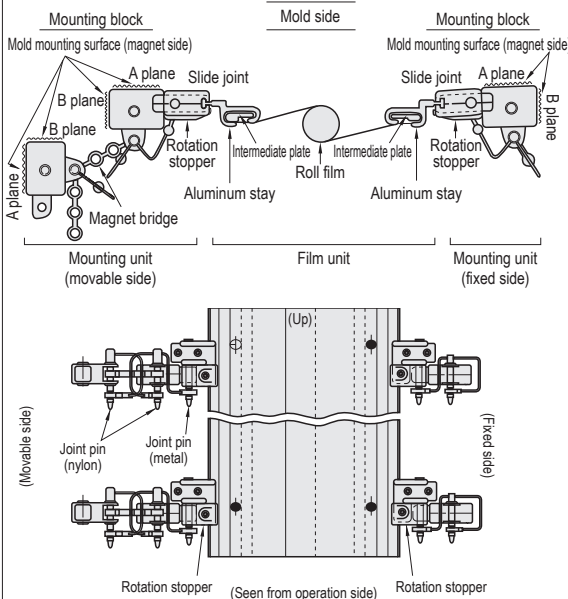


Material Film: Polyester

■ Clean Barrier System 2  
Double-side fixed type (Accessories ①②③④)

**CB2-W**

Mounting image diagram



Part Number Type	No.	Height (mm)	Opening width (mm)	Unit Price 1-2 pcs
<b>CB2-W</b> (Fixed on both sides)	0	200	320	Quotation
	1	350	320	
	2	500	450	
	3	650	580	
	4	800	900	
	5	950	900	
	1L	350	520	
	2L	500	650	

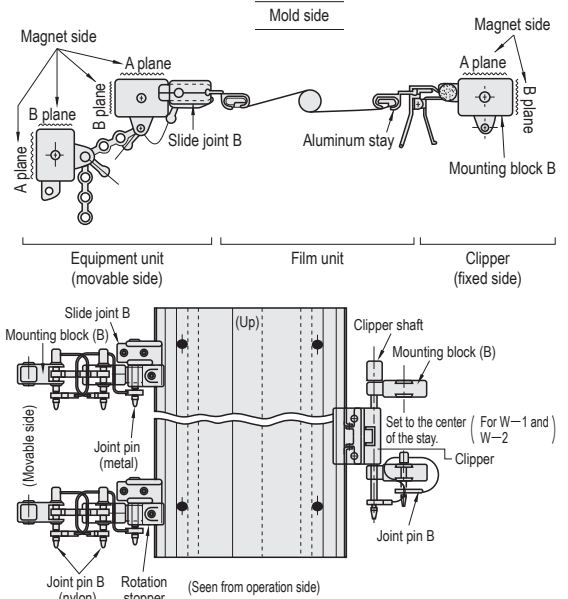
■ Accessories

No.	Appearance	Product name	Part Number	Unit Price 1-4 pcs
①	Magnet holder Material: PBTGF30	Mounting block B	CBW-01P	Quotation
②	Slide joint B Material: PBTGF30	Slide joint B	CBW-02P	
③	Magnet bridge	Magnet bridge	CBW-03P	
④	Joint pin B	Joint pin B	CBW-04P	

■ Clean Barrier System 2A  
Type with clipper on one side (one-touch opening/closing) (Accessories ①②③④⑤⑥)

**CB2A-W**

Mounting image diagram



Part Number Type	No.	Height (mm)	Opening width (mm)	Unit Price 1-2 pcs
<b>CB2A-W</b> (With clipper on one side)	0	200	320	Quotation
	1	350	320	
	2	500	450	
	3	650	580	
	4	800	900	
	5	950	900	
	1L	350	520	
	2L	500	650	

■ Film Unit (for replacement, without accessories)

Part Number Type	No.	Height (mm)	Opening width (mm)	Unit Price 1-2 pcs
<b>CBF-W</b>	0	200	320	Quotation
	1	350	320	
	2	500	450	
	3	650	580	
	4	800	900	
	5	950	900	
	1L	350	520	
	2L	500	650	

No.	Appearance	Product name	Part Number	Unit Price 1-4 pcs
⑤	Clipper	Clipper	CBW-05P	Quotation
⑥	Clipper shaft	Clipper shaft	CBW-06P	

Ⓜ An instruction manual is provided on the MISUMI product page.