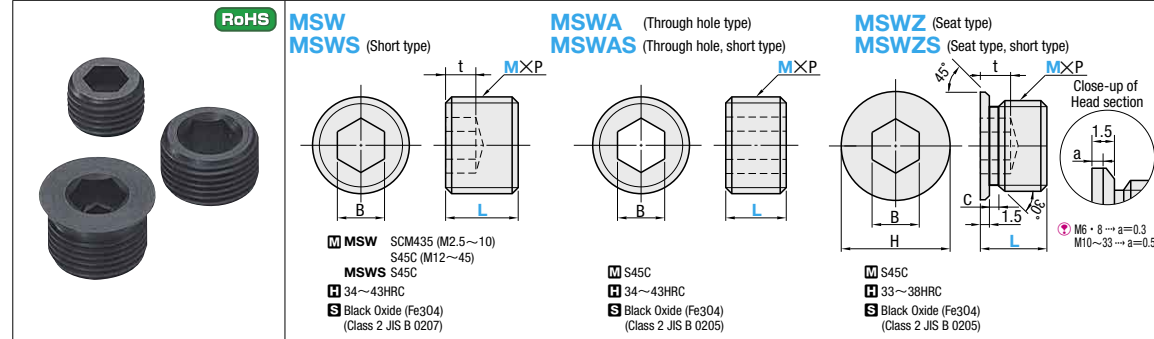


# SCREW PLUGS

# SCREW PLUGS

—JIS TYPE/LONG TYPE/TAPERED TYPE—

Ⓜ M2.5~M10 are Coarse thread, while M12~M45 (Pitch1.5) are fine thread.



M×P	L	B	t	Part Number Type	U/Price 1~299	Slide Unit Price 300~500
2.5 0.45	3	1.3	1.2	2.5		
3 0.5	3	1.5		3*		
4 0.7	4	2	1.5	4*		
5 0.8	5	2.5	2	5*		
6 1.0	6	3	3.5	6		
8 1.25	8	4	5	8		
10 1.5	10	5	6	10		
12	12	6		12		
14	14	8	5	14		
16	16	10		16		
18	18	12		18		
20	20	14	6	20		
22	22	16		22		
24	24	18		24		
25	25	20		25		
26	26	22		26		
27	27	24		27		
28	28	26		28		
30	30	28		30		
32	32	30		32		
33	33	33		33		

M×P	L	B	t	Part Number Type	U/Price 1~299	Slide Unit Price 300~499	Slide Unit Price 500~1000
8 1.25	4			8-6			
10 1.5	5			10-6			
12	6	3		12-6			
14	8			14-6			
16	10			16-6			
18	12			18-6			
20	14			20-8			
22	16			22-8			
24	18			24-8			
25	20			25-8			
26	22			26-8			
27	24			27-8			
28	26			28-8			
30	28			30-8			
32	30			32-8			
33	33			33-8			

M×P	L	B	Part Number Type	U/Price 1~299	Slide Unit Price 300~499	Slide Unit Price 500~999	Slide Unit Price 1000~2000
8 1.25	4		8-6				
10 1.5	5		10-6				
12	6		12-6				
14	8		14-6				
16	10		16-6				
18	12		18-6				
20	14		20-8				
22	16		22-8				
24	18		24-8				
25	20		25-8				
26	22		26-8				
27	24		27-8				
28	26		28-8				
30	28		30-8				
32	30		32-8				
33	33		33-8				

M×P	L	B	H	t	C	Part Number Type	U/Price 1~99	Slide Unit Price 100~199	Slide Unit Price 200~299	Slide Unit Price 300~500
10 1.5	5	13				10-10				
12	6	15				12-10				
14	8	17				14-10				
16	10	19				16-10				
18	12	21				18-10				
20	14	23				20-10				
22	16	25				22-10				
24	18	27				24-10				
25	20	28				25-10				
26	22	29				26-10				
27	24	30				27-10				
28	26	31				28-10				
30	28	33				30-12				
32	30	35				32-12				
33	33	36				33-12				

M×P	L	B	Part Number Type	U/Price 1~299	Slide Unit Price 300~499	Slide Unit Price 500~999	Slide Unit Price 1000~2000
8 1.25	8	4	8				
10 1.5	10	5	10				
12	12	6	12				
14	14	8	14				
16	16	10	16				
18	18	12	18				
20	20	14	20				
22	22	16	22				
24	24	18	24				
25	25	20	25				
26	26	22	26				
27	27	24	27				
28	28	26	28				
30	30	28	30				
32	32	30	32				
33	33	33	33				

M×P	L	B	H	t	C	Part Number Type	U/Price 1~99	Slide Unit Price 100~199	Slide Unit Price 200~299	Slide Unit Price 300~500
6 1.0	8	3	9			6				
8 1.25	10	4	11			8				
10 1.5	12	5	13			10				
12	14	6	15			12				
14	16	7	17			14				
16	18	8	19			16				
18	20	9	21			18				
20	22	10	23			20				
22	24	11	25			22				
24	26	12	27			24				
25	27	13	28			25				
26	28	14	29			26				
27	29	15	30			27				
28	30	16	31			28				
30	32	17	33			30				
32	34	18	35			32				
33	36	19	36			33				

Ⓜ Compared with the standard type (MSW · MSWA · MSWZ), the short type screw plugs naturally have less threads. Before use, check the load that applies to the screw plug and the material of the plate to be tapped.

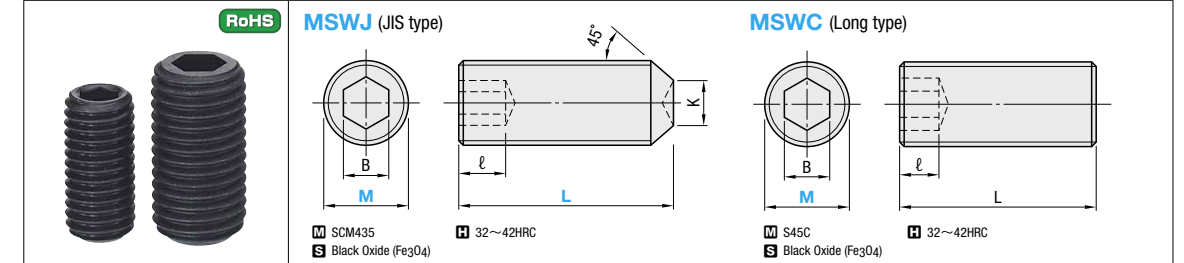
Ⓜ M12 and larger are fine thread type to retain the thread and to ensure strength.

Order Part Number MSW 18 MSWS18-6

Days to Ship Quotation

ℓ dimension is the minimum dimension. This may be longer depending on the lot.

Ⓜ Non JIS material definition is listed on P.1351 - 1352

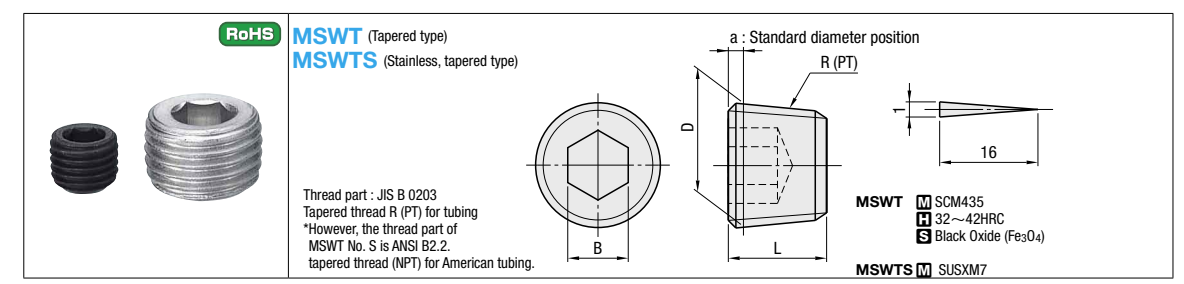


M×Pitch (Coarse thread type)	ℓ	K	B	Part Number Type	U/Price 1~99	Slide Unit Price 100~199
M 3×0.5	1.5	1.5	1.5	3		
M 4×0.7	2	2	2	4		
M 5×0.8	2.5	2.5	2.5	5		
M 6×1.0	3	3	3	6		
M 8×1.25	4	5	4	8		
M 10×1.5	4	6	5	10		
M 12×1.75	5	8	6	12		

M×Pitch (Coarse thread type)	L	B	ℓ	Part Number Type	U/Price 1~49	Slide Unit Price 50~99
M 6×1.0	3	3		6		
M 8×1.25	4	4		8		
M 10×1.5	5	5		10		
M 12×1.75	6	6		12		
M 14×2.0	8	8		14		
M 16×2.0	10	10		16		
M 18×2.5	12	12		18		
M 20×2.5	14	14		20		
M 22×2.5	16	16		22		
M 24×3.0	17	17		24		
M 27×3.0	18	18		27		
M 30×3.5	19	19		30		

Ⓜ To be quoted on price & lead time above Max. Q'ty.

Ⓜ To be quoted on price & lead time above Max. Q'ty.



D	a	L	B	t	R(PT)	Part Number Type	U/Price 1~14	Slide Unit Price 15~99	U/Price 1~14	Slide Unit Price 15~99
7.723	0.45	6	4	3.0	1/16	MSWT				
7.779	0.47	6.4	4.4	3.1		MSWT				
9.728	0.45	7	5	3.5	1/8	MSWT				
13.157	0.7	8.9	6	4.5	1/4	MSWT				
16.662	0.7	10	8	5	3/8	MSWT				
20.955	0.9	12	10	6	1/2	MSWTS				
26.441	1.1	14	14	7	3/4	MSWTS				
33.249	1.1	16.5	17	9	1	MSWTS				

D	a	L	B	t	R(PT)	Part Number Type	U/Price 1~14	Slide Unit Price 15~99	U/Price 1~14	Slide Unit Price 15~99
7.723	0.45	6	4	3.0	1/16	MSWT				
7.779	0.47	6.4	4.4	3.1		MSWT				
9.728	0.45	7	5	3.5	1/8	MSWT				
13.157	0.7	8.9	6	4.5	1/4	MSWT				
16.662	0.7	10	8	5	3/8	MSWT				
20.955	0.9	12	10	6	1/2	MSWTS				
26.441	1.1	14	14	7	3/4	MSWTS				
33.249	1.1	16.5	17	9	1	MSWTS				

Ⓜ No. of threads per 25.4mm. \* MSWT No. S is ANSI thread; Use a 5/32" hex wrench for mounting. MSWT No. J is JIS thread.

Ⓜ To be quoted on price & lead time above Max. Q'ty.

Order Part Number MSWT J MSWT 4

Days to Ship Quotation

Ⓜ MSW : Dimensions and shape of cup point

Example

Part Number	dz max.
MSW3	1.4
MSW4	2.0
MSW5	2.5

Ⓜ (Countersunk type)  
 • Seat section gives loosening prevention effect.  
 • Chamfering depth W prevents over-tightening of the spring.

Ⓜ Note that the tips of MSW 3, 4 and 5 are the "cup points".