

Blind Joint Components

Pre-Assembly Insertion Double Joint Kits for 8-45 Series (Slot Width 10mm) Aluminum Extrusions

For details of securing method, see P.637.
Alterations necessary to use this component

S Type Hole Alterations
P.791

Blind Joint Components

Post-Assembly Insertion Double Joint Kits for 8-45 Series (Slot Width 10mm) Aluminum Extrusions

For details of securing method, see P.633.
Alterations necessary to use this component

M Type Hole Alterations
P.792

Features: Two screws are used for connection. A joint type superior in mounting flexibility: can be used to extend extrusions as well as mounting to plates.

Pre-Assembly Insertion Double Joint Kits

Standard Type
HDJNSN
HDJHSN (Offset Nut Type)

Offset Nut Type

Products shown in the picture come by ordering quantity 1. **RoHS10**

(1)Pre-Assembly Insertion Double Joints
HDJFSN (SUS316 Equivalent, Sintered)

(2)Pre-Assembly Insertion Nuts
HNTHSN (SUS316 Equivalent, Sintered) Electrically Conductive
HNTHSN (SUS316 Equivalent, Sintered) Electrically Conductive

Pre-Assembly Insertion Double Joints	Part Number	Usable in any direction	Usable in the short length direction	Usable in the long length direction	Usable in the direction where there is no flat surface at the connecting part
	4545				
	4590				
NFSB	45180				
HFSB	5050				
GFSB	50100				
EFBS	6060				
NEFSB	9090				
	90190				
HFSFB	4545				
GFSFB	4590				
EFSSB	5050				
NEFSB	6060				
HFSFB	9090				
EFSSB	4545				
NFSLB	4545				
HFSLB	4590				
HFSLB	5050				
EFSSB	50100				
	9090				
	90190				
HFSFB	4545				

Not applicable to extrusions not listed above.

Pre-Assembly Insertion Double Joint Kits

Type	Part Number	(1)Pre-Assembly Double Joint (2 pcs.)	(2)Pre-Assembly Nut (2 pcs.)	(3)Hex Socket Set Screw (2 pcs.)	Unit Price	Volume Discount Rate
		SUS316 Equivalent	SUS316 Equivalent	SUS304	1-99 pc(s)	100-120
Standard Type	HDJNSN (SUS316 Equivalent, Sintered)	8-45	HDJFSN8-45	HNTHSN8-6	SCB6-35	
Offset Nut Type	HDJHSN (SUS316 Equivalent, Sintered)	8-45	HDJFSN8-45	HNTHSN8	SCB6-35	

(1)Pre-Assembly Insertion Double Joint (Single Item)

Part Number	Unit Price	Volume Discount Rate	
Type	No.	1-99 pc(s)	100-120
HDJFSN (One set contains 2 pcs.)	8-45	200	190

One set (2 pcs.) is required to connect one place.

Example

Example of Extension Connection
HFSB-4545-200-LSH

Example of Mounting to an Extrusion from the Bottom
HFSB-4545-200-LBH

Nuts for Pre-Assembly Insertion Double Joints

HDJRN

Material: SUS304

Part Number	Applicable	Mass (g)	Unit Price	Volume Discount Rate	
Type	Extrusion	Pre-Assembly Insertion Double Joint	Screw	1-99 pc(s)	100-120
HDJRN	8-45	8-4545	HDJFSN8-45	CBM6-50	56

Ordering Example

Part Number: HDJNSN8-45, HDJRN8

Features: Pre-Assembly Insertion Double Joint installable without alterations. (No holes are required on the mating extrusion.)

Double Joints Pre-Assembled Aluminum Extrusions

JFSD8-4545L (Double Joints Pre-Assembled on Left End Face)
JFSD8-4545W (Double Joints Pre-Assembled on Both End Faces)

Part Name | **Material** | **Surface Treatment**

Aluminum Extrusion	AGN01SS-T5	Anodize
Pre-Assembly Insertion Double Joint Kits	SUS316 Equivalent	-
Offset Nut	SUS304	-

Joint components will be shipped loosely tightened.

Example

JFSD8-4545L

HFSB-4545

Tighten with a hex wrench while adjusting the position.

Part Number	Joint Component	L 0.5mm Increment	Extrusion	Pre-Assembled Joint Component	Required Wrench for Tightening	Extrusion Unit Price	Joints, Others
				Pre-Assembly Insertion Double Joint	Quantity	Less than 300mm	300mm or more (JPY/m)
JFSD	8-4545	L (Left End Face only) W (Both End Faces)	100-4000	HFSB-4545 (P.707)	2 4	45	For M6

Ordering Example

Part Number - L
JFSD8-4545L - 1200

Alterations

Alterations only on this page are available.

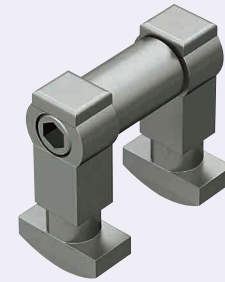
Alterations	Code	Spec.		
		Extrusion	Tap	Depth
Right End Face Tapping	RTP	8-4545	M12 (Hell-Coil Insert)	18

Applicable to Left End Pre-Inserted Type only.

Alterations	Code	Spec.		
		Extrusion	H	Hole Dia.
Right End Face Wrench Hole	RCH, RCV	8-4545	22.5	8

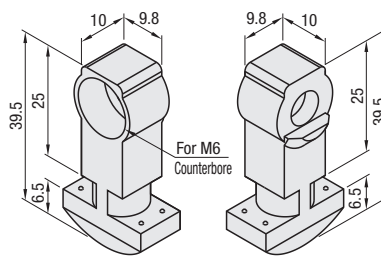
Applicable to Left End Pre-Inserted Type only.

Post Assembly Insertion Double Joint Kits

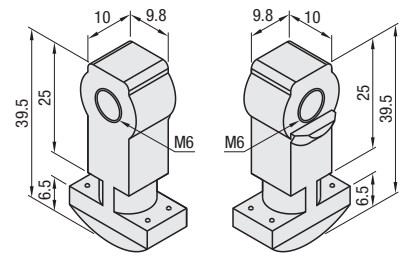


HPJN (Post-Assembly Insertion Double Joints)

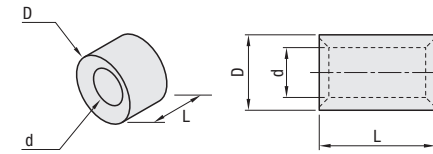
(1)Post-Assembly Insertion Double Joint A



(2)Post-Assembly Insertion Double Joint B



(3)Joint Pipe



Part Name	Material
Post-Assembly Insertion Double Joint (A, B)	SCS13
Joint Pipe	SUS304 Equivalent (Sintered)
Hex Socket Head Cap Screw	SUS304

Part Number	Accessory				Unit Price	Volume Discount Rate
	Type	No.	Quantity	Quantity		
HPJN	8-45	Post-Assembly Insertion Double Joint A8-45	1	Post-Assembly Insertion Double Joint B8-45	1	
	8-90					
	8-60					
	8-100					

(3)Joint Pipe

Part Name	L	D	d
Joint Pipe 8-45	19		
Joint Pipe 8-90	64		
Joint Tube 8-50	24	13	8
Joint Tube 8-60	34		
Joint Tube 8-100	74		

Post-Assembly Insertion Double Joint Kits	Applicable Extrusion No.	[Exception] Extrusion Not Available
HPJN8-45	8-4545*	*HFSB-4545, HFSLB-4545, HFSLT8-4545 cannot be used because the thickness of slot extrusion is different.
HPJN8-90	8-4590* 8-9090	
HPJN8-50	8-5050 8-50100	*HFSB-4590 cannot be used because the thickness of slot extrusion is different.
HPJN8-60	8-6060	
HPJN8-100	8-100100 8-50100 8-100200	

Not usable for surfaces without slots.

Ordering Example

Part Number: HPJN8-45

Installation Example

HPJN8-45

HFSB-4545-1000-LMH

Length (Optional)

M Hole Alterations

HFSB-4545-1000

Length (Optional)

App. Example of Rectangle Shape Extrusion

Pre-Assembly Insertion Double Joint Connection (Connect the extrusion at the corners or the center.)

- Pre-insert the joint pipe (C) into the M hole of extrusion (1).
- Insert the Post-Assembly Double Joints (A) and (B) sideways into the slot of extrusion (2).
- Rotate the joints (A) and (B) by 90°.
- Fit the joints (A) and (B) in the slot of the extrusion.
- Insert the hex socket head cap screw into a counterbore hole of the joint (A).
- Tighten the hex socket head cap screw with a hex wrench; the extrusion (1) and (2) are lifted upward, then 2 extrusions joint together.