

# Flat Belt Conveyor Full Belt Type

## Head Drive, 3-Groove Frame (Pulley Dia. 50mm)

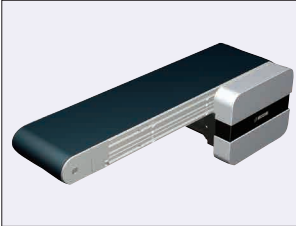
CE Compliant

\* The above compliance applies only for Single-phase 230V Motors.

Dedicated web site <http://fa.misumi.jp/cvs/>

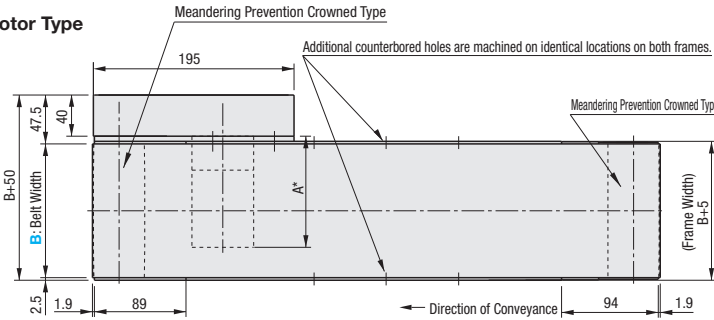
The above site can be used to search for Conveyor components and their maintenance parts.

Features: Conveyor with full width belt that enables the entire surface to be used for transporting.



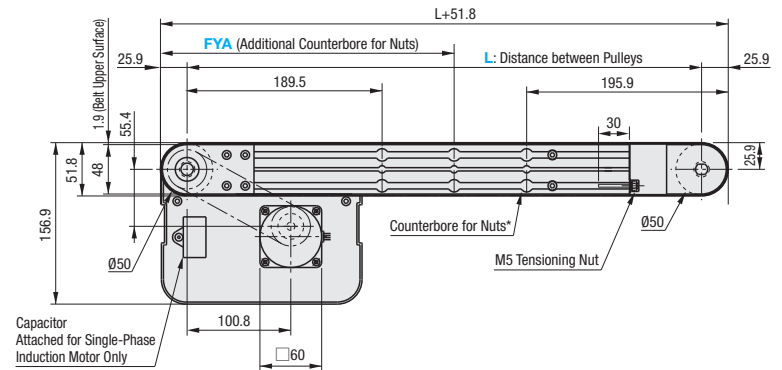
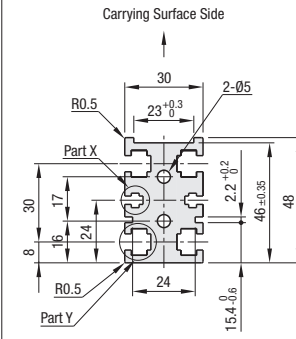
CVSFB

6W Motor Type



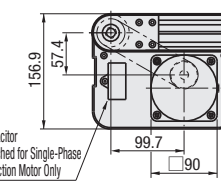
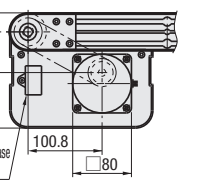
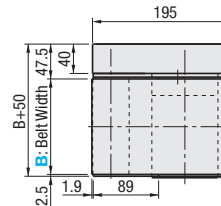
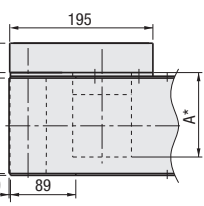
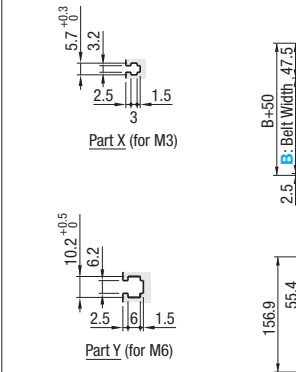
	Frame	Motor Cover	Pulley Holder (1)	Pulley Holder (2)
M Material	Aluminum	Aluminum	A5052	SS400
S Surface Treatment	Clear Anodize	Paint	Clear Anodize	Inert Chromate

Frame Cross Section and Enlarged View (Symmetrical)



25W Motor Type

40W Motor Type



\* When  $L \leq 415$ , counterbores for the nuts will not be provided. However, each slot has 4 pre-inserted nuts provided.

⚠ The dimensions in the diagram is for Belt Specification H (0.9mm THK). Note that belt thickness varies by Belt Specifications. For Belt Specifications, see P.1313~.

⚠ The Y section of the frame is used for pulley holder mounting. The nuts cannot be moved to this area.

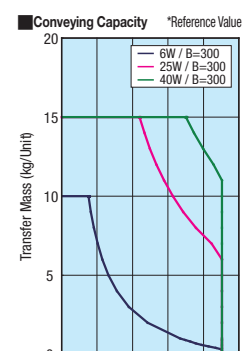
⚠ On some operating environments, conveyance failure may occur.

\*A Dimension (Motor Overall Length) Details

Output (W)	Motor Specification	Manufacturer	Reduction Ratio	A
6W	Induction Motor	Panasonic	12.5-25	101.0
		Panasonic	30-180	108.0
		Oriental	12.5-25	105.0
	Variable Speed Motor	Oriental	30-180	115.0
		Taiwanese	12.5-75	114.7
		Taiwanese	90-180	120.7
25W	Induction Motor	Panasonic	12.5-180	115.0
		Panasonic	12.5-18	117.0
		Oriental	25-180	127.5
	Variable Speed Motor	Taiwanese	12.5-75	129.0
		Taiwanese	90-180	136.0
		Oriental	12.5-18	127.0
Variable Speed Motor	Oriental	25-180	137.5	
	Taiwanese	12.5-75	139.5	
	Taiwanese	90-180	146.5	

\*Conveying Capacity \*Reference Value

Output (W)	Motor Specification	Manufacturer	Reduction Ratio	A
40W	Induction Motor	Panasonic	12.5-180	142.0
		Panasonic	12.5-18	147.0
		Oriental	25-180	165.0
	Variable Speed Motor	Taiwanese	12.5-75	161.6
		Taiwanese	90-180	170.6
		Oriental	12.5-18	157.0
Variable Speed Motor	Oriental	25-180	175.0	
	Taiwanese	12.5-75	172.1	
	Taiwanese	90-180	181.1	



\*Gearhead Reduction Ratio \*May decrease depending on load condition.

Gearhead Reduction Ratio	Belt Speed (m/min)	
	50Hz	60Hz
12.5	18.8	22.6
15	15.7	18.8
18	13.1	15.7
25	9.4	11.3
30	7.9	9.4
36	6.5	7.9
50	4.7	5.7
60	3.9	4.7
75	3.1	3.8
90	2.6	3.1
100	2.4	2.8
120	2.0	2.4
150	1.6	1.9
180	1.3	1.6

Part Number	B 10mm Increment	L 5mm Increment	Motor			Gearhead Reduction Ratio	Belt Specification	FYA (Additional Counterbores) 5mm Increment	Motor Manufacturer Selection
			Output (W)	Voltage (V)	Specification				
CVSFB	60-300	320-2000	6	TA115 (Single-phase)	IM (Induction Motor)	12.5 15 18 25 30 36 50 60 75 90 100 120 150 180	H (General Purpose, Green) W (General Purpose, White) G (For Sliding, Green) S (For Sliding, White) D (For Electronic Parts Transfer, Black) F (For Food Transfer, White) O (Oil Resistant, Navy Blue) N (Non-adhesive, White) J (No Belt)	240<FYA<L-220 * When not specified, there will be no additional counterbores.	A (Panasonic Motor) B (Oriental Motor) C (Taiwanese Motor) * SCM (Variable Speed Motor) is not selectable for A. * For C, the conveyance speed may decrease by approx. 20%.
			25		SA220 (3-phase) SA230 (3-phase)				
			6	NV (No Motor)	NM (No Motor)	NH (No Gearhead)	* When A or B is selected as the Motor Manufacturer Option, choose a belt from Belt Specification table below.	R (No Motor, Gearhead)	

⚠ Connect the motor so that the belt rotates in the direction of conveyance. For connection diagram, and details of motor, see P.1301~.

⚠ When "No motor, gearhead" is selected, the motor mounting hole pitch will vary depending on the motor's power rating. For the dimension details, see Technical Information in our Conveyor Selection web site.

⚠ When "No motor, gearhead" is selected, this unit will be delivered unassembled. The customer is to assemble the unit by following instructions on the included assembly procedure manual. See our Conveyor Selection site for assembly procedures and packaging details.

⚠ Purple Color Type of Belt is the Catalog Standard-Altered product. For details, see P.1313~.

Belt Specification	Standard Belt (Body Price Only)	Optional Belt 1	Optional Belt 2	No Belt
General Purpose	H (Green), W (White), HG (Green)	-	HY (Yellow Green), HBN (Sky Blue), HGN (Green)	J (No Belt)
For Sliding	G (Green), S (White)	-	-	
For Inclined Transfer	LG (Green), LW (White)	-	-	
Grip Type	-	GG (Green), GW (White)	GSN (Green)	
Oil Resistant	O (Navy Blue), OH (Green), OG (Green)	OW (White)	ON (White)	
Non-adhesive	N (White), NS (White)	NB (Sky Blue), NBG (Lime Green), HH (Green), HW (White)	NWN (White), NSN (Sky Blue), NGN (Lime Green), HBG (Green), HBW (White), BW (White)	
For Food Transfer	F (White)	KW (White), KSB (Sky Blue), PHB (Sky Blue)	PHN (Sky Blue), PWN (White), KWN (White), KDN (White)	
For Electronic Parts Transfer	D (Black), DS (Black)	-	DG (Black)	

⚠ For flat belt details, see P.1313~.

⚠ For Motor Manufacturer C (Taiwanese Motor), select either the H, W, G, S, D, F, O, N or J (No Belt) option.

⚠ Since only the transporting surface side is designed to be oil resistant, Oil Resistant Types are not useable on environments where it is very likely that oil adheres to the back face.

Part Number	B	Body Price 1~10 pc(s)																	
		L320-400	L405-500	L505-600	L605-700	L705-800	L805-900	L905-1000	L1005-1100	L1105-1200	L1205-1300	L1305-1400	L1405-1500	L1505-1600	L1605-1700	L1705-1800	L1805-1900	L1905-2000	
CVSFB	60-100																		
	110-150																		
	160-200																		
	210-250																		
	260-300																		

⚠ For orders larger than indicated quantity, please check with WOS.

Motor Spec. Price	Motor Output	Specification	A (Panasonic Motor)	B (Oriental Motor)	C (Taiwanese Motor)	R (No Motor, Gearhead)
			6W	IM		
25W	SCM					
40W						

Belt Spec. Price	Standard Belt	Optional Belt 1	Optional Belt 2	No Belt

Ordering Example: **Part Number** - **B** - **L** - **Motor** (Output - Voltage - Specification - Gearhead Reduction Ratio) - **Belt Specification** - **Motor Manufacturer Selection** - **FYA**

CVSFB - 100 - 1000 - 25 - T100 - IM - 25 - H - A - FYA500

- Motor Position Reversed
  - Motor Cover with Window
  - Brackets for Speed Controller Included
  - Post-Assembly Insertion Nuts Included
  - Motor with Terminal Box
  - Stands (Legs)
- For details of Alterations, see P.1298~.