

Flat Belt Conveyor Full Belt Type

Head Drive, 2-Groove Frame (Pulley Dia. 30mm)

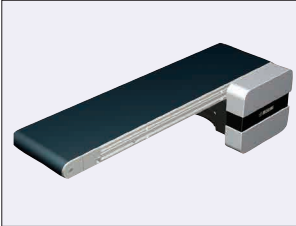
CE
Compliant

*The above compliance applies only for Single-phase 230V Motors.

Dedicated web site <http://fa.misumi.jp/cvs/>

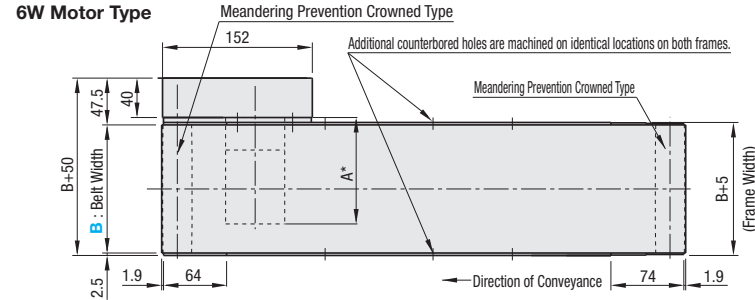
The above site can be used to search for Conveyor components and their maintenance parts.

■ Features: Conveyor with full width belt that enables the entire surface to be used for transporting.



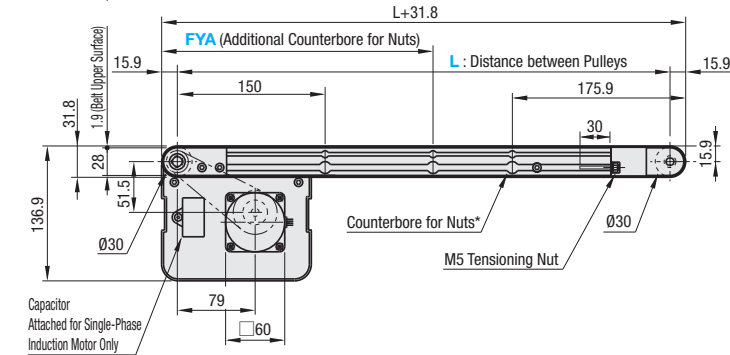
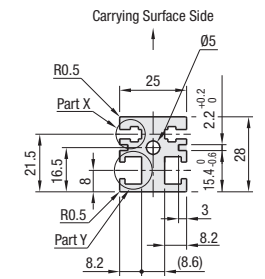
CVSFA

6W Motor Type

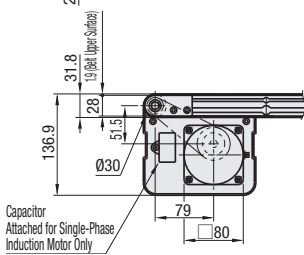
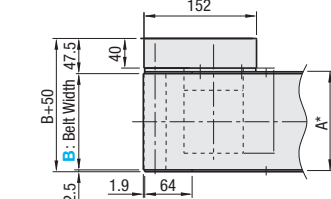


	Frame	Motor Cover	Pulley Holder(1)	Pulley Holder(2)
M Material	Aluminum	Aluminum	A5052	SS400
S Surface Treatment	Clear Anodize	Paint	Clear Anodize	Inherent Chromate

Frame Cross Section and Enlarged View (Symmetrical)



25W Motor Type



* When L≤360, counterbores for the nuts will not be provided. However, each slot has 4 pre-inserted nuts provided.

⚠ The dimensions in the diagram is for Belt Specifications H (0.9mm THK.). Note that belt thickness varies by Belt Specifications.

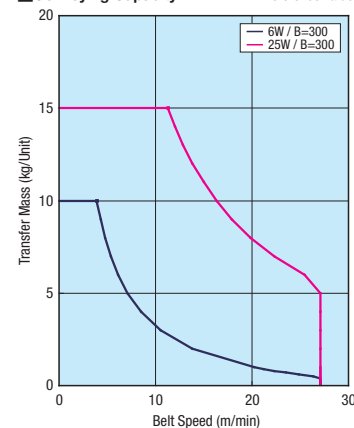
⚠ On some operating environments, conveyance failure may occur.

⚠ Compatible with JIS standard hex nuts.

*A Dimension (Motor Overall Length) Details

Output (W)	Motor		Reduction Ratio	A
	Specification	Manufacturer		
6W	Induction Motor	Panasonic	12.5-25	101.0
		Oriental	30-180	108.0
			12.5-25	105.0
	Taiwanese	30-180	115.0	
		12.5-75	114.7	
		90-180	120.7	
25W	Induction Motor	Panasonic	12.5-25	115.0
		Oriental	30-180	125.0
			12.5-75	128.9
	Taiwanese	90-180	132.9	
		12.5-75	129.0	
		90-180	136.0	
Variable Speed Motor Control Motor	Oriental	12.5-18	127.0	
		25-180	137.5	
		12.5-75	139.5	
	Taiwanese	90-180	146.5	

Conveying Capacity



Gearhead Reduction Ratio

* May decrease depending on load condition.

Gearhead Reduction Ratio	Belt Speed (m/min)	
	50Hz	60Hz
12.5	22.6	27.1
15	18.8	22.6
18	15.7	18.8
25	11.3	13.5
30	9.4	11.3
36	7.8	9.4
50	5.6	6.8
60	4.7	5.6
75	3.8	4.5
90	3.1	3.8
100	2.8	3.4
120	2.4	2.8
150	1.9	2.3
180	1.6	1.9

Part Number	B 10mm Increment	L 5mm Increment	Motor			Belt Specification	FYA (Additional Counterbores) 5mm Increment	Motor Manufacturer Selection	
			Output (W)	Voltage (V)	Specification				Gearhead Reduction Ratio
CVSFA	60~300	280~2000	6 25	TA115 (Single-phase)	IM (Induction Motor) SCM (Variable Speed Motor)	12.5 15 18 25 30 36 50 60 75 90	H (General Purpose, Green) W (General Purpose, White) G (For Sliding, Green) S (For Sliding, White) D (For Electronic Parts Transfer, Black) F (For Food Transfer, White) O (Oil Resistant, Navy Blue) N (Non-adhesive, White) J (No Belt)	190<FYA<L-210 * When not specified, there will be no additional counterbores.	A (Panasonic Motor) B (Oriental Motor) C (Taiwanese Motor)
			25	SA220 (3-Phase) SA230 (3-Phase)	IM (Induction Motor)				* SCM (Variable Speed Motor) is not selectable for A.
			6 25	NV (No Motor)	NM (No Motor)	NH (No Gearhead)			* When A or B is selected as the Motor Manufacturer Option, choose a belt from Belt Specification table below.

- ⚠ Connect the motor so that the belt rotates in the direction of conveyance. For connection diagram, and details of motor, see P.1301--.
- ⚠ When "No motor, gearhead" is selected, the motor mounting hole pitch will vary depending on the motor's power rating. For the dimension details, see Technical Information in our Conveyor Selection web site.
- ⚠ When "No motor, gearhead" is selected, this unit will be delivered unassembled. The customer is to assemble the unit by following instructions on the included assembly procedure manual. See our Conveyor Selection site for assembly procedures and packaging details.
- ⚠ Purple Color Type of Belt is the Catalog Standard-Altered product. For details, see P.1313--.

Belt Specification	Standard Belt (Body Price Only)	Optional Belt 1	Optional Belt 2	No Belt
General Purpose	H (Green), W (White), HG (Green)	-	HY (Yellow Green), HBN (Sky Blue)	J (No Belt)
For Sliding	G (Green), S (White)	-	-	
For Inclined Transfer	LG (Green), LW (White)	-	-	
Grip Type	-	GG (Green), GW (White)	GSN (Green)	
Oil Resistant	O (Navy Blue), OH (Green), OG (Green)	OW (White)	ON (White)	
Non-adhesive	N (White), NS (White)	NB (Sky Blue), NBG (Lime Green), HH (Green), HW (White)	NWN (White), NSN (Sky Blue), NGN (Lime Green), HBG (Green), HBW (White), BW (White)	
For Food Transfer	F (White)	KW (White), KSB (Sky Blue), PHB (Sky Blue)	PHN (Sky Blue), PWN (White), KWN (White)	
For Electronic Parts Transfer	D (Black), DS (Black)	-	DG (Black)	

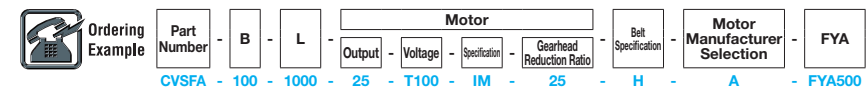
- ⚠ For flat belt details, see P.1313--.
- ⚠ For Motor Manufacturer C (Taiwanese Motor), select either the H, W, G, S, D, F, O, N or J (No Belt) option.
- ⚠ Since only the transporting surface side is designed to be oil resistant, Oil Resistant Types are not useable on environments where it is very likely that oil adheres to the back face.

Part Number	B	Body Price 1~10 pc(s).																		
		L280~300	L305~400	L405~500	L505~600	L605~700	L705~800	L805~900	L905~1000	L1005~1100	L1105~1200	L1205~1300	L1305~1400	L1405~1500	L1505~1600	L1605~1700	L1705~1800	L1805~1900	L1905~2000	
CVSFA	60~100																			
	110~150																			
	160~200																			
	210~250																			
	260~300																			

⚠ For orders larger than indicated quantity, please check with WOS.

Motor Spec. Price	Motor Output	Specification	A (Panasonic Motor)	B (Oriental Motor)	C (Taiwanese Motor)	R (No Motor, Gearhead)
6W	6W	IM				
25W	25W	SCM				

Belt Spec. Price	Standard Belt	Optional Belt 1	Optional Belt 2	No Belt



Alterations

Motor Position Reversed
Motor Cover with Window
Brackets for Speed Controller Included
Post-Assembly Insertion Nuts Included
Motor with Terminal Box
Stands (Legs)

For details of Alterations, see P.1298--.