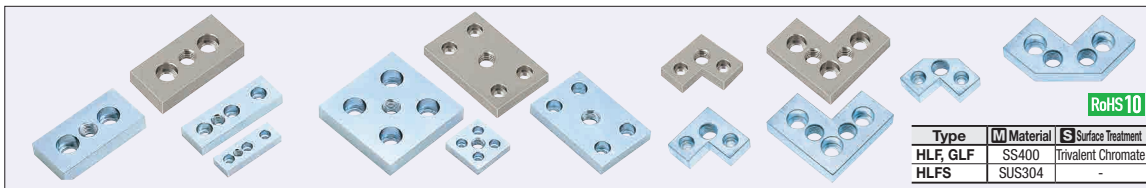


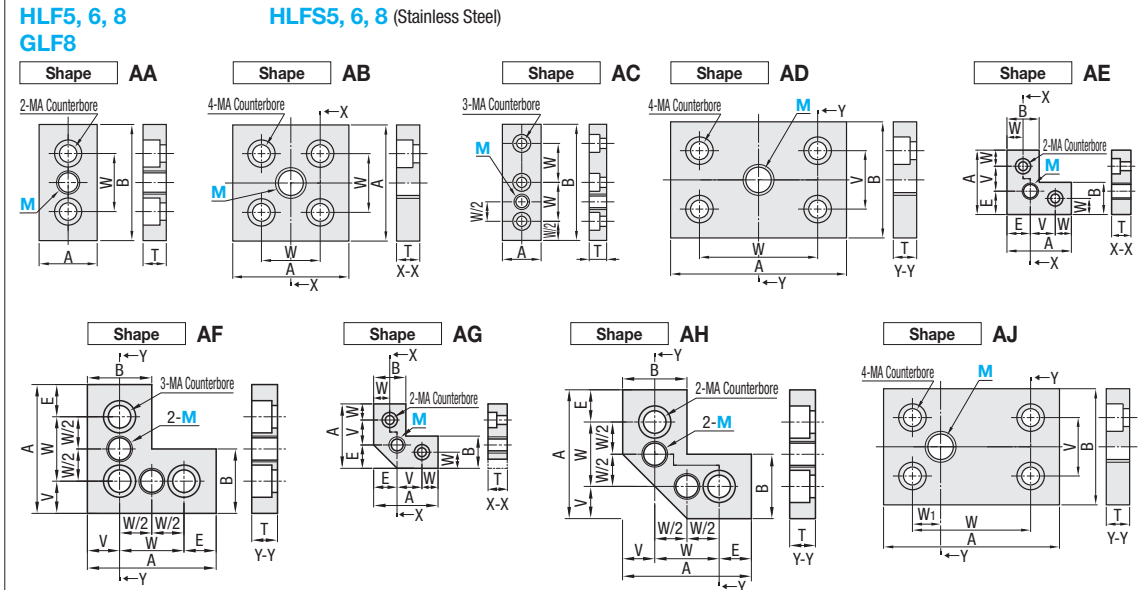
Foot Bases

Pads for Aluminum Extrusions / Foot Bases for 40 and 45 Squares



RoHS10

Type	Material	Surface Treatment
HLF, GLF	SS400	Trivalent Chromate
HLFS	SUS304	-



HLF and GLF Types have no plating finish on tapped holes.

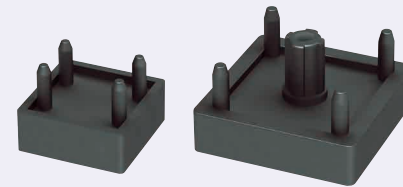
Part Number Type	Extrusion	Leveling Mount M	Shape	A	B	W	W1	V	E	T	Counterbore MA	Mass (kg) HLF(GLF) HLFS	Screw	HLF(GLF) HLFS				
														Quantity	Unit Price 1~8 pc(s)	Volume Discount Rate 9~50	Unit Price 1~8 pc(s)	Volume Discount Rate 9~50
HLF5 HLFS5	2040	8	AA	20	40	20				9	5	0.05	M5-15					
	2550	8	AA	25	50	25				12	8	0.07	M8-25	2				
	2060	8	AC	20	60	20						0.06						
	2080	8	AC	20	80	20						0.1	M5-15					
	4040	8 10 12	AB	40		20						0.09		4				
	404020	12	AE	40				15.5	14.5		12	5	0.08		2			
	404020A	12	AG	40		10						5	0.06	M5-20	2			
	4060	12	AJ	60	40	10							0.14					
	4080	12	AD	80	40	60		20			9		0.21	M5-15	4			
	3060	10 12 16	AA	30	60	30							0.13					
3090	12	AC	30	90								0.24		2				
30120	12	AA	30	120	90							0.31						
5050	10 12	AB	50		20							0.28						
50100	10 12	AD	50	50	70		20					0.42						
100100	16 20	AB	100							12	8	0.9	M8-25	4				
6060	10 12 16	AB	60									0.28						
606030	12	AF	60	30	30		15	15				0.18		3				
606030A	12	AH	60	30								0.16		2				
6090	16	AD	90	60	60		30					0.47		4				
60120	16	AD	90	60	90							0.63						
4080*	12 16	AA	40	80	40							0.31	M12-30					
40160	16	AA	40	160	120						12	0.79		2				
4590*	16	AA	45	90	45							0.427						
45180	16 20	AA	45	180	135							0.94	M12-20					
50100*	16	AA	50	100	50							0.55						
8080	12 16 20	AB	80									0.73	M8-30	4				
808040	16	AF	80	40	40		20	20		16	12	0.38	M12-30	3				
808040A	16	AH	80	40								0.35	M12-30	2				
80160	16 20	AD	160	80	120		40					1.56	M8-30	4				
9090	16 20	AB	90									0.95						
909045	16	AF	90	45	45		22.5	22.5				0.54	M12-20	3				
909045A	16	AH	90	45								0.51		2				
90180	16 20	AD	180	90	135		45					1.99	M8-30	4				
GLF8	9090		90		45					16	12	0.95	M12-25					
	100100		100		50							1.12	M12-20	4				

*Foot bases marked with * in the specification table are also applicable to high rigid aluminum extrusion.

Mounting screws are not included.

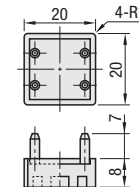
Ordering Example: Part Number HLF6-3060 - M 10

Pads for Aluminum Extrusions

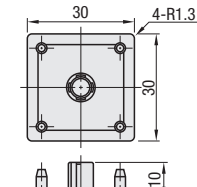


RoHS10

HFPD5-2020



HFPD6-3030



Material: TPE (Thermoplastic Elastomer)

Part Number Type	No.	Extrusion	Mass (g)	Unit Price 1 ~ 9 pc(s)	Volume Discount Rate 10-50
HFPD	5-2020	NFS5 Series	20 Square, Single Slot	4	
		HFS5 Series	20 Square, Single Slot		
	6-3030	NFS6 Series	30 Square, Single Slot	9	
		HFS6 Series	30 Square, Single Slot		

Ordering Example: Part Number HFPD6-3030

Characteristic Value

Item	Unit	Value
Hardness *1	Shore	D59
Tensile Strength *2	Mpa	19.9
Plastic Deformation Rate by Compression *3	%	28
Specific Volume Resistivity	Ω · cm	6.5x10 ⁵

*1. Based on JIS K 7215 Type D Durometer

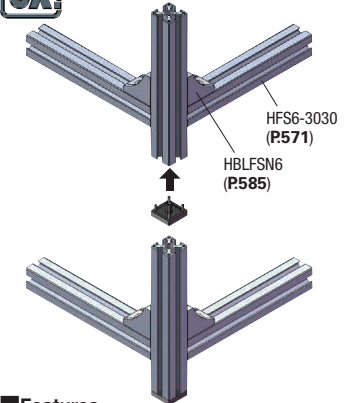
*2. Based on JIS K 7113

*3. Based on JIS K 7113

For comparing electrical conductivities to those of other materials, refer to P490.

Above data are normal values, not standard values nor guaranteed values.

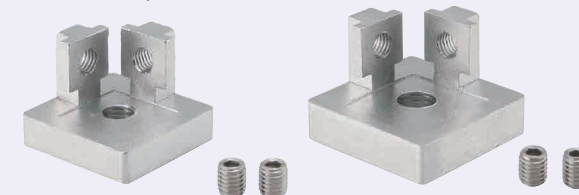
Example



Features

- This pad can be directly mounted to the end of Aluminum Extrusions.
- Tapping aluminum extrusion end faces not necessary.

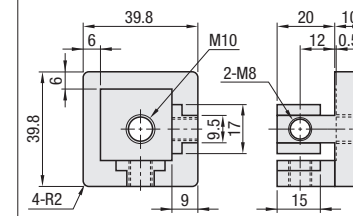
Foot Bases for 40 and 45 Squares



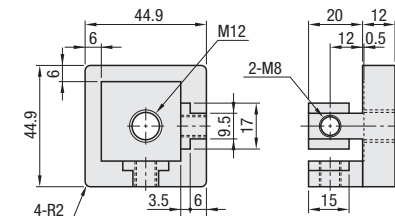
RoHS10

Part Number	Component	Material	Surface Treatment
HLFC8-4040	Caster	SCS13	-
HLFC8-4545	Set Screw	SUS304	-

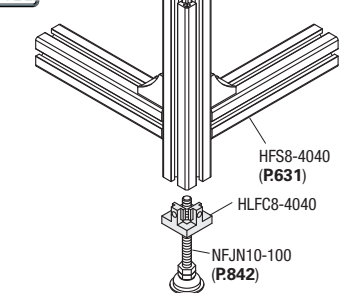
HLFC8-4040



HLFC8-4545



Example



Part Number Type	No.	Extrusion	Accessory	Mass (g)	Unit Price 1 ~ 9 pc(s)	Volume Discount Rate 10-50
HLFC8	4040	EF8-4040 HFS8-4040 HFSL8-4040 GFS8-4040	M8 Set Screw x2	150		
	4545	EF8-4545 HFS8-4545		210		

Ordering Example: Part Number HLFC8-4040