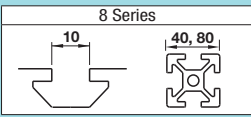
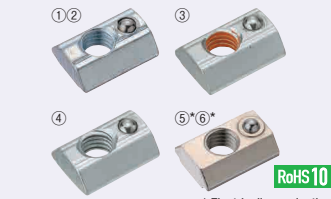


Post-Assembly Insertion Nuts for Aluminum Extrusions with Temporary Holding Function For 8 Series (Slot Width 10mm)

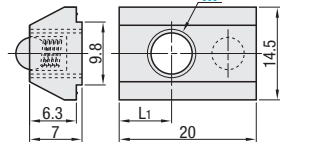


Tightening Torque P.526

Post-Assembly Insertion Spring Nuts



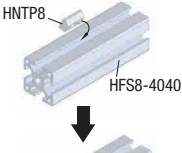
HNTP8 (S10C Equivalent)
PACK-HNTP8 (S10C Equivalent, 100/pkg.)
HNTPV8 (Thread Locking Adhesive Type, S10C Equivalent)
HNTPZ8 (Thread Locking Resin Coating Type, S10C Equivalent)
SHNTP8 (SUS316 Equivalent, Sintered)
PACK-SHNTP8 (SUS316 Equivalent, Sintered, 100/pkg.)



Reference Tightening Torque (N·m)	
M	S10C Equivalent / SUS316 Equivalent (Sintered)
8	23.5



Example
 Built-in spring prevents slips. Moves easily in the slot when pressed slightly by hand.



*Does not fall even if the extrusion is placed vertically.

Type	Material		Surface Treatment
	Main Body	Wing Part	
① HNTP8	S10C	SUS304	Trivalent Chromate
② PACK-HNTP8	Equivalent	SUS304	SWP-A
③ HNTPV8	Equivalent	SUS304	Trivalent Chromate
④ HNTPZ8	Equivalent	SUS304	Trivalent Chromate
⑤ SHNTP8*	SUS316 Equivalent (Sintered)	SUS304	SUS304-WP8
⑥ PACK-SHNTP8*	Equivalent	SUS304	

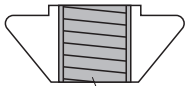
Part Number	M	L1	Unit Price				Volume Discount Rate		
			1 ~ 499 pc(s).	500~749	750~999	1000~1500			
HNTP8 (S10C E quivalent)	4 5 6 8	8							
HNTPV8 (Thread Locking, S10C Equivalent)	8								
HNTPZ8 (Thread Locking, S10C Equivalent)	8								
SHNTP8 (SUS316 Equivalent, Sintered)	4 5 6 8	8.5							

Bulk Packages

Part Number	M	L1	Unit Price (1 ~ 10 packages)		Part Number	M
			Package Price	Price per Pkg.		
PACK-HNTP8 (S10C Equivalent)	4 5 6 8	8			HNTP8	8
PACK-SHNTP8 (SUS316 Equivalent, Sintered)		8.5				

100 pcs. per package

Thread Locking Type



Thread locking compound applied inside of the tap.

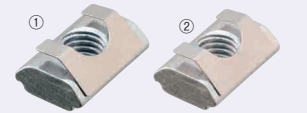
Nuts with thread locker applied on the inside of tap. Reduce loosening caused by vibration during transportation and operation of equipment.
 Thread Locking Adhesive: A microencapsulated anaerobic adhesive prevents thread loosening. Note that it requires a hardening time (72 hours at room temperature 25°C). The adhesive property is lost once loosened.
 Resin Coating : Resin is coated along the threads. Although the thread locking effect may be less than adhesive type, it can be used repeatedly without hardening time required.

Effect of Thread Locker (Reference)

Loosening torque values are for reference. Difference may occur depending on the clearances between screws and nuts.

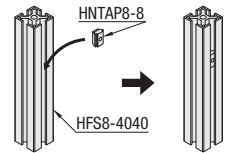
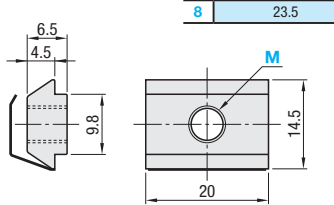
Without Thread Locker	Characteristics	Loosening Torque after Tightening (1st time)	Remarks
	-	17.9N·m	-
Thread Locking Adhesive Type	<ul style="list-style-type: none"> Prevents loosening effectively. Thread locking properties are lost once loosened. Requires a hardening time for adhesives (72 hours at room temperature 25°C) after tightening. 	25.6N·m	Test Conditions: Measured value (HNTPV8-8) when a screw is loosened after drying for 72 hours at room temperature (25 °C), after tightened at 23.5N·m.
Thread Locking Resin Coating Type	<ul style="list-style-type: none"> Can be used repeatedly. (Thread locking effect decreases after repeated use.) Thread locking effect is immediately seen right after tightening. 	20.3N·m	Thread locking effect decreases after repeated use. Loosening Torque at 5 Repeats: 19.1N·m Measurement with HNTAZ8-8

Post-Assembly Insertion Nuts with Leaf Springs



HNTAP8
SHNTAP8

Reference Tightening Torque (N·m)	
M	S10C Equivalent / SUS304
8	23.5



Welded Leaf Springs prevent the nuts from slipping off even if inserted into the vertically-placed extrusions.

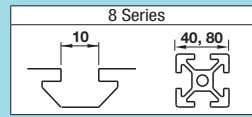
Type	Material	Surface Treatment
① HNTAP8	S10C Equivalent	SUS304
② SHNTAP8	SUS304	SUS304

Part Number	M	L	Unit Price				Volume Discount Rate		
			1 ~ 499 pc(s).	500~749	750~999	1000~1500			
HNTAP8	4 5 6 8								
SHNTAP8	4 5 6 8								

Ordering Example	Part Number	M
	HNTAP8	8

Note that, for some of the types shown here, order might be unable to be received by the MISUMI Malaysia, and/or Indonesia offices.

Post-Assembly Insertion Nuts for Aluminum Extrusions - Others For 8 Series (Slot Width 10mm)

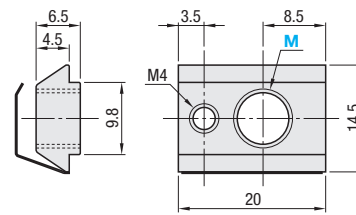


Tightening Torque P.526

Post-Assembly Insertion Lock Nuts with Leaf Springs



HNTRP8

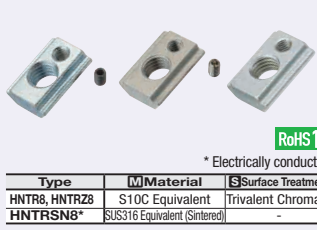


Reference Tightening Torque (N·m)	
M	S10C Equivalent
8	23.5

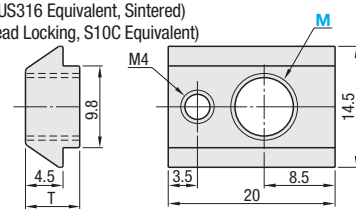
Part	Material	Surface Treatment
Wing Part	SUS304	-

Part Number	M	Accessory	Unit Price				Volume Discount Rate		
			1 ~ 499 pc(s).	500~749	750~999	1000~1500			
HNTRP8	8	M4x4 Set Screw for Locking							

Post-Assembly Insertion Lock Nuts



HNTR8 (S10C Equivalent)
HNTRS8 (SUS316 Equivalent, Sintered)
HNTRZ8 (Thread Locking, S10C Equivalent)



Reference Tightening Torque (N·m)	
M	S10C Equivalent / SUS316 Equivalent (Sintered)
8	23.5

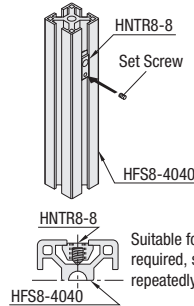
Type	Material	Surface Treatment
HNTR8, HNTRZ8	S10C Equivalent	Trivalent Chromate
HNTRS8*	SUS316 Equivalent (Sintered)	-

Part Number	M	T	Accessory	Unit Price				Volume Discount Rate		
				1 ~ 499 pc(s).	500~749	750~999	1000~1500			
HNTR8 (S10C Equivalent)	4 5 6 8	6.5	M4x6 Set Screw for Locking 1 pc.							
HNTRS8 (SUS316 Equivalent, Sintered)		6.0								
HNTRZ8 (Thread Locking, S10C Equivalent)	8	6.5								

Ordering Example	Part Number	M
	HNTR8	8



Post-Assembly Insertion Lock Nut



The nut can be fixed in place by itself by tightening the included set screw.

Suitable for use where high repeatability is required, such as mounting sensors or repeatedly replacing panels.

Post-Assembly Insertion Lock Nut with Leaf Springs



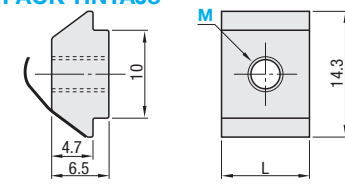
Welded Leaf Springs prevents nuts from slipping off even if inserted into the vertically-oriented extrusions, leading to easy locking.

Also, the nut can be fixed in place by tightening the included set screw.

Post-Assembly Insertion Short Nut



HNTAJ8
PACK-HNTAJ8



*Overall length is shorter than Pre-Assembly Insertion Nuts HNTT. Suitable for installing sensors or other components closely together.

Ordering Example	Part Number	M
	HNTAJ8	8

Part Number	M	L	HNTAJ8			PACK-HNTAJ8				
			Unit Price	Volume Discount Rate	Unit Price	Volume Discount Rate				
			1 ~ 499 pc(s).	500~749	750~999	1000~1500	1 pkg.	2~4	5~9	10~20
HNTAJ8	3 4	10								
PACK-HNTAJ8	8	12								

100 pcs. per package