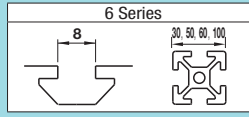


Note that, for some of the types shown here, order might be unable to be received by the MISUMI Malaysia, Indonesia and/or India offices.

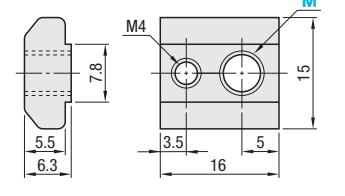
Pre-Assembly Insertion Nuts/Stoppers for Aluminum Extrusions - Others For 6 Series (Slot Width 8mm)



Tightening Torque P526

Pre-Assembly Insertion Lock Nut

HNTC6

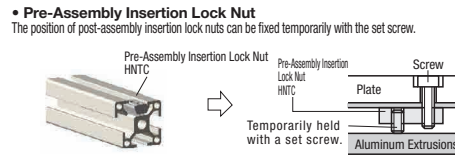


Reference Tightening Torque (N·m)	
M	S10C Equivalent
6	11.7

M Material: S10C Equivalent
S Surface Treatment: Trivalent Chromate RoHS10



Example



Part Number	M	Accessory	Unit Price	Volume Discount Rate
HNTC6	6	M4x6 Set Screw for Locking 1 pc.	1 - 499 pc(s)	500-749 750-999 1000-1500

Overall length is shorter than Pre-Assembly Insertion Nuts HNTT. Suitable for installing sensors or other components closely together.
Stopper is not included.

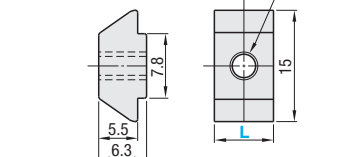
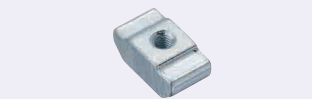


Ordering Example	Part Number	M
	HNTC6	6
	HNTJ6	5

Pre-Assembly Insertion Short Nuts

HNTJ6

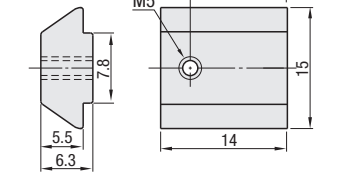
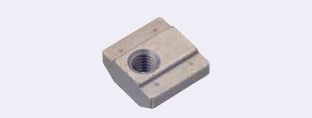
PACK-HNTJ6 (100/pkg.)



Part Number	M	L	HNTJ6				PACK-HNTJ6 (100/pkg.)		
			Unit Price	Volume Discount Rate	Unit Price	Volume Discount Rate	Unit Price	Volume Discount Rate	
HNTJ6	4	8	1 - 499 pc(s)	500-749 750-999 1000-1500	1 - 9 pkg(s)	10-19	20-30		
PACK-HNTJ6	5	10							

Pre-Assembly Insertion Offset Nuts

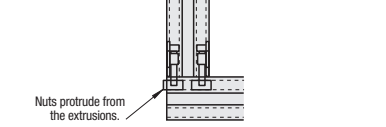
HNTHS6



M Material: SUS316 Equivalent (Sintered) RoHS10



The pre-assembly insertion offset nut, used in combination with a post-assembly insertion double joint, can be fixed in such a way that the nut, even if connected at the corner of the extrusion, does not protrude from the extrusion (frame).

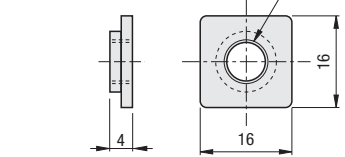
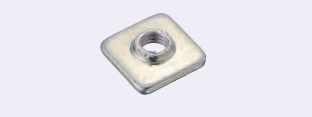


Part Number	Unit Price
HNTHS6	1 ~ 150 pc(s)

* Electrically conductive

Pre-Assembly Insertion Square Nuts

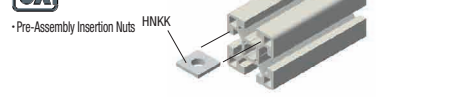
HNKK6



M Material: SPCC
S Surface Treatment: Trivalent Chromate RoHS10



Example

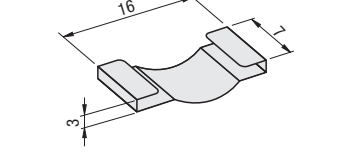


Part Number	M	Unit Price	Volume Discount Rate
HNKK6	4 5 6	1 ~ 9 pkg(s)	10-19 20-30

* 100 pcs. per package
Insert it into the extrusion upside down.

Metal Stoppers for Pre-Assembly Insertion Square Nuts

HNKKST6



M Material: SUS301 RoHS10



Example



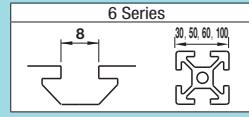
Part Number	Applicable Pre-Assembly Insertion Nut	Unit Price	Volume Discount Rate
HNKKST6	HNKK6	1 ~ 9 pkg(s)	10-19 20-30

* 100 pcs. per package

Ordering Example	Part Number	M
	HNTHS6	6
	HNKK6	6
	HNKKST6	6

Applicable Extrusions and Brackets
Applicable to extrusions and brackets with the same part number.
(Ex.)
Pre-Assembly Insertion Nuts: HNTT6 - □
Pre-Assembly Insertion Stoppers: HNST6
Extrusion: HFS6 - □□□□
Brackets: HBLFSN6

Post-Assembly Insertion Nuts/Stoppers for Aluminum Extrusions - Standard For 6 Series (Slot Width 8mm)



Tightening Torque P526

Post-Assembly Insertion Stopper Nuts

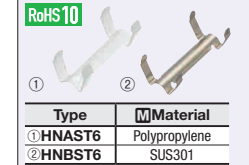


Type	Material	Surface Treatment
① HNTA6	S10C Equivalent	Trivalent Chromate
② PACK-HNTA6	S10C Equivalent	Trivalent Chromate
③ HNTAV6	S10C Equivalent	Trivalent Chromate
④ HNTAZ6	S10C Equivalent	Trivalent Chromate
⑤ HNTASN6*	SUS316 Equivalent	-
⑥ PACK-HNTASN6*	SUS316 Equivalent	-
⑦ HNTASS6	SUS303 Equivalent	-

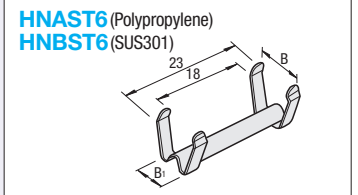
Part Number	M	Unit Price	Volume Discount Rate		
			1 - 499 pc(s)	500-749	750-999 1000-1500
HNTA6 (S10C Equivalent)	3 4 5	6			
HNTAV6 (Thread Locking, S10C Equivalent)	6				
HNTAZ6 (Thread Locking, S10C Equivalent)	6				
HNTASN6 (SUS316 Equivalent, Sintered)	3 4 5 6				
HNTASS6 (SUS303 Equivalent)	6				

Part Number	M	Unit Price (1 ~ 10 packages)	Volume Discount Rate	
			Package Price	Price per Pkg.
PACK-HNTA6 (S10C Equivalent)	3 4 5	6		
PACK-HNTASN6 (SUS316 Equivalent, Sintered)	3 4 5 6			

Post-Assembly Insertion Stoppers / Metal Stoppers



Type	Material
① HNAST6	Polypropylene
② HNBST6	SUS301



Part Number	Applicable Stopper Nut	Color	B	B1	Unit Price		
					1 - 499 pc(s)	500-999	1000-1500
HNAST6	HNTA6 HNTAV6 HNTASN6 HNTASS6	White	9.3	7.8			
HNBST6		-	10.5	6			

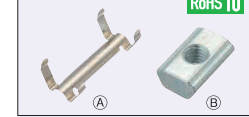
Post-Assembly Insertion Nut and Stopper Set



Type	Stopper Nut	Stopper
HNTAT6	HNTA6	HNAST6
HNTATS6*	HNTASN6	HNBST6

Part Number	M	Unit Price	Volume Discount Rate		
			1 - 499 pc(s)	500-749	750-999 1000-1500
HNTAT6	3 4 5	6			
HNTATS6	3 4 5 6				

Post-Assembly Insertion Nut and Metal Stopper Set



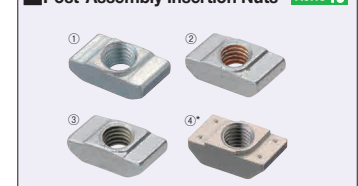
Type	Stopper Nut	Stopper
HNTBT6	HNTA6	HNBST6
HNTBTS6*	HNTASN6	HNBST6

Part Number	M	Unit Price	Volume Discount Rate		
			1 - 499 pc(s)	500-749	750-999 1000-1500
HNTBT6	3 4 5	6			
HNTBTS6	3 4 5 6				

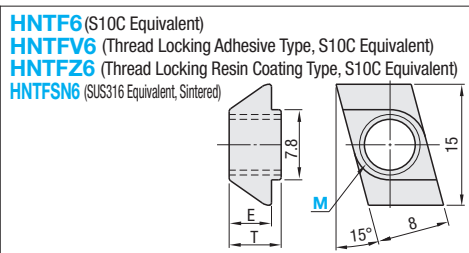
Part Number	M
HNTAT6	6

*Insert a stopper into the extrusion and put into a nut on it.
*Does not fall even if the extrusion is placed vertically.

Post-Assembly Insertion Nuts



Type	Material	Surface Treatment
① HNTF6	S10C Equivalent	Trivalent Chromate
② HNTFV6	S10C Equivalent	Trivalent Chromate
③ HNTFZ6	S10C Equivalent	Trivalent Chromate
④ HNTFSN6*	SUS316 Equivalent (Sintered)	-



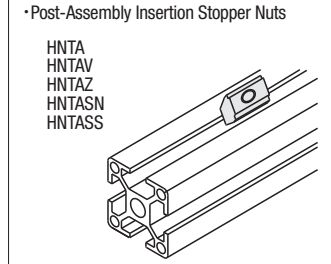
Reference Tightening Torque (N·m)	
M	S10C Equivalent / SUS316 Equivalent (Sintered)
6	11.7

* Details of Thread Locking Type P623

Part Number	M	E	T	Unit Price	Volume Discount Rate		
					1 - 499 pc(s)	500-749	750-999 1000-1500
HNTF6 (S10C Equivalent)	3 4 5 6						
HNTFV6 (Thread Locking, S10C Equivalent)	6	5.5	6.3				
HNTFZ6 (Thread Locking, S10C Equivalent)	6						
HNTFSN6 (SUS316 Equivalent, Sintered)	3 4 5 6	6.4	7.4				



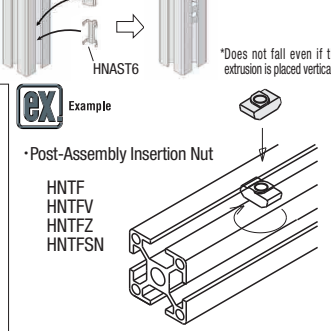
Example



Ordering Example	Part Number	M
	HNTA6	6



Example



Ordering Example	Part Number	M
	HNTF6	6