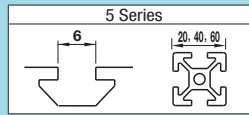


Thin Brackets

For 5 Series (Slot Width 6mm) Aluminum Extrusions



■ Features: Thin Extruded Brackets with space saving design.

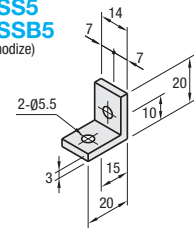
Thin Brackets



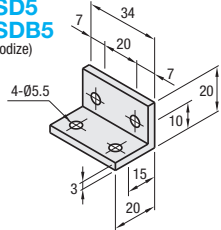
RoHS 10

Type	M Material	S Surface Treatment
HBLSS5	A6N01SS-T5	Clear Anodize
HBLSD5	A6N01SS-T5	Black Anodize

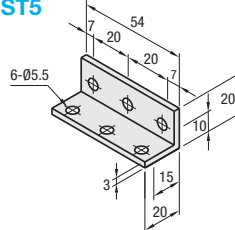
HBLSS5
HBLSSB5
(Black Anodize)



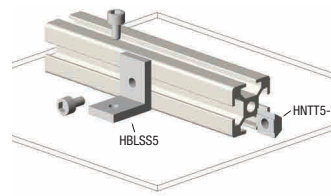
HBLSD5
HBLSD5B5
(Black Anodize)



HBLST5



Part Number Type	Mass (g)	Applicable Screw, T Nut	Quantity	Allowable Load (N)	Unit Price (1-99 pc(s))	Volume Discount Rate (100-200)
HBLSS5	3.8	CBM5-8	2	HNTT5-5	2	686
HBLSSB5* (Black Anodize)						
HBLSD5	10	CBM5-8	4	HNTT5-5	4	1176
HBLSD5B5* (Black Anodize)						
HBLST5	15		6		6	1617



* For repairing black anodizing, refer to P.846.

■ Features: Thin Brackets with tabs to fit in slots of extrusions and stop rotating when tightening.

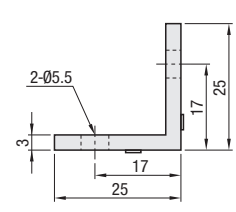
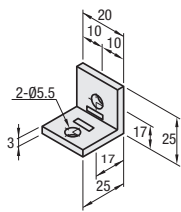
Thin Stainless Steel Tabbed Brackets

HBLSP5

Material: SUS304



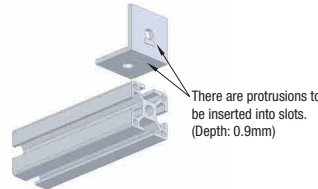
RoHS 10



Type	Mass (g)	Applicable Screw, T Nut	Quantity	Allowable Load (N)	Unit Price (1-99 pc(s))	Volume Discount Rate (100-200)
HBLSP5	10	CBM5-8	2	HNTT5-5	2	686



■ Features of HBLSP (Slot Stainless Steel Brackets with Tabs)



Ordering Example Part Number **HBLST5**



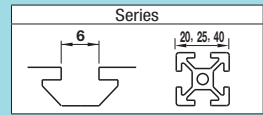
Part Number - (SET, SST, SEU, SSU, SEP, SSP)
HBLST5 - SET

Alterations	Code	Spec.	Applicable Bracket
Applicable Screws and Nuts Set	SET	Applicable screws and nuts for fixing the brackets on extrusions come in a set. (Adds to the bracket price.)	
	SST	(Ex.) When HBLSS5 is specified:	
	SEU	CODE Screw Nut	HBLSS5
	SSU	SET CBM5-8 HNTT5-5	HBLSSB5
	SEP	SST SCB5-8 HNTTBS5-5	HBLSD5
	SSP	SEU CBM5-8 HNTU5-5	HBLSD5B5
	SSP	SSU SCB5-8 SHNTU5-5	HBLST5
	SEP CBM5-8 HNTTP5-5	HBLSP5	
	SSP SCB5-8 SHNTP5-5		

⚠ Screws for black anodized brackets are HCBMTB (Trivalent Chromate Black) on P.751.
⚠ Included Screw is not RoHS compliant when -SET, -SEU or -SEP other than black anodized brackets is specified.

Plate Brackets / Block Brackets

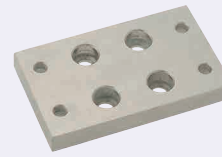
For 5 Series (Slot Width 6mm) Aluminum Extrusions



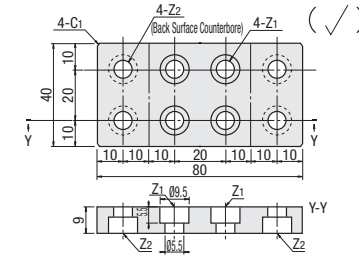
■ Features: Direct screw-on brackets to use on tapped extrusions.

Plate Brackets

HBLPL5-4040

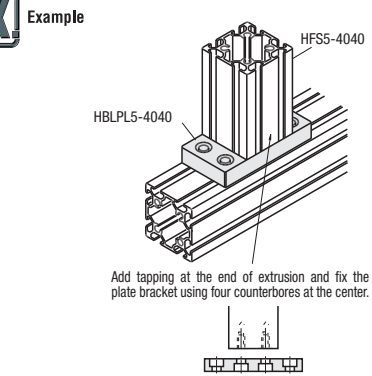


Material : SS400
Surface Treatment: Electroless Nickel Plating



Part Number Type	Extrusion	Z1 Applicable Screw	Z2 Applicable Screw	Mass (g)	Unit Price (1 ~ 9 pc(s))	Volume Discount Rate (10-50)
HBLPL5	4040	M5	M5	210		

Ordering Example Part Number - Extrusion
HBLPL5 - 4040



Add tapping at the end of extrusion and fix the plate bracket using four counterbores at the center.



Part Number - Extrusion - (DC)
HBLPL5 - 4040 - DC10

Alteration	Code	Spec.
Through Hole	DC	Adds a through hole. DC=Hole Dia. 1 mm Increment 10 ≤ DC ≤ 20 Ordering Code: DC12

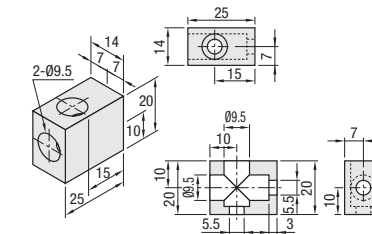
■ Features: The brackets do not protrude from extrusion widths when used to cross connect extrusions. Space-saving design compared to Tabbed Reversal Brackets.

Block Brackets

HBLBL5



Material : A6063
Surface Treatment: Anodize



Part Number Type	Mass (g)	Applicable Screw	Quantity	Allowable Load (N)	Unit Price (1-99 pc(s))	Volume Discount Rate (100-200)
HBLBL5	13	CBM5-8	2	686		

Ordering Example Part Number **HBLBL5**



Part Number - (SET, SST, SEU, SSU, SEP, SSP)
HBLBL5 - SET

Alterations	Code	Spec.	Applicable Bracket
Applicable Screws and Nuts Set	SET	Applicable screws and nuts for fixing the brackets on extrusions come in a set. (Adds to the bracket price.)	
	SST	CODE Included Screw Included Nut	
	SEU	SET CBM5-8 HNTT5-5	
	SSU	SST SCB5-8 HNTTBS5-5	
	SEP	SEU CBM5-8 HNTU5-5	
	SSP	SSU SCB5-8 SHNTU5-5	
	SSP	SEP CBM5-8 HNTTP5-5	HBLBL5
	SSP SCB5-8 SHNTP5-5		

⚠ Included Screw is not RoHS compliant when -SET, -SEU or -SEP are specified.