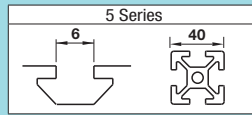


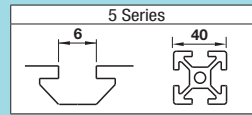
Tabbed Brackets - For 2 Slots

For 5 Series (Slot Width 6mm) Aluminum Extrusions



Extruded Brackets - For 2 Slots

For 5 Series (Slot Width 6mm) Aluminum Extrusions

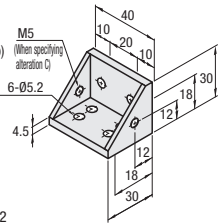


■ **Features:** Extrusions with 2 slots (HFS5-4040, etc.) can be connected with one bracket.

Tabbed Reversal Brackets

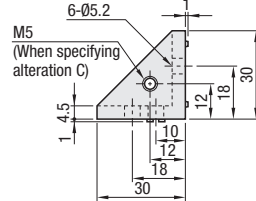
HBLFSD5
HBLFSDK5

(with Single Side Tab)

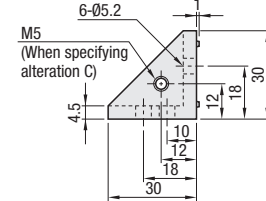


Material: ADC12

HBLFSD5 Side View



HBLFSDK5 Side View (Without Tab on the lower side)

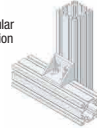


Part Number	Mass (g)	Applicable Screw, T Nut		Allowable Load (N)	Unit Price	Volume Discount Rate
		Screw	T Nut			
HBLFSD5	25	CBM5-10	4 HNTT5-5	4	1470	
HBLFSDK5						



Example

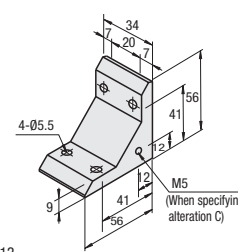
Can be connected in parallel and perpendicular directions to the extrusion slot.



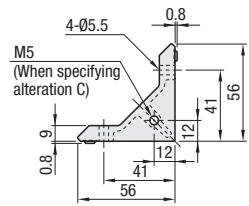
■ **Features:** Tabbed Brackets with 2 slots for extrusions (HFS5-2040, etc.).

Tabbed Brackets

HBLFUD5



Material: ADC12



Part Number	Mass (g)	Applicable Screw, T Nut		Allowable Load (N)	Unit Price	Volume Discount Rate
		Screw	T Nut			
HBLFUD5	76	CBM5-14	4 HNTT5-5	4	1470	



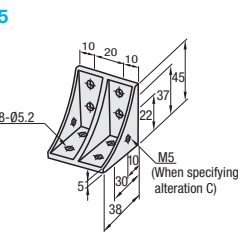
Example



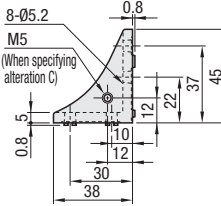
■ **Features:** Ribbed Brackets with 4 mounting holes on one side can connect extrusions more securely.

Tabbed Reversal Brackets

HBLFSDW5



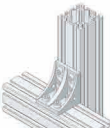
Material: ADC12



Part Number	Mass (g)	Applicable Screw, T Nut		Allowable Load (N)	Unit Price	Volume Discount Rate
		Screw	T Nut			
HBLFSDW5	47	CBM5-10	8 HNTT5-5	8	2156	



Example



Ordering Example
Part Number: HBLFSD5

Alterations	Code	Spec.	Applicable Bracket
Applicable Screws and Nuts Set	SET SST	Applicable screws and nuts for fixing the brackets on extrusions come in a set. (Adds to the bracket price.)	
	SEU	(Ex.) When HBLFSD5 is specified:	HBLFSD5
	SSU	Code Screw Nut	
	SEP	SET CBM5-10 HNTT5-5	HBLFSDK5
	SSP	SST SCB5-10 HNTTBS5-5	HBLFUD5
Mounting Hole Alteration for Cover	C	Adds taps on a bracket for cover mounting. (M5 on Both Sides) (Mounting Screw HCBM on P.754)	HBLFSD5 HBLFSDK5 HBLFUD5 HBLFSDW5

⚠️ Included Screw is not RoHS compliant when -SET, -SEU or -SEP are specified.

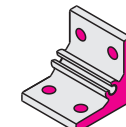
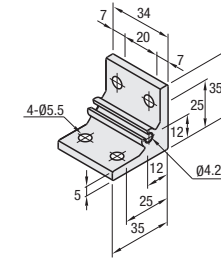
■ **Features:** Extrusions with 2 slots (HFS5-4040, etc.) can be connected with one bracket.

Thick Brackets

NBLTD5
HBLTD5
HBLTDB5
CHBLTD5

(Black Anodize)

(Clear Coating)



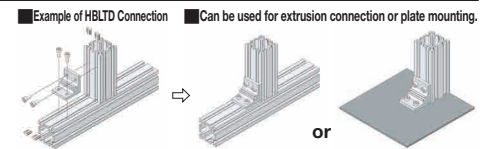
⚠️ Both sides and screw holes of NBLTD5 is not anodized.

Type	Material	Surface Treatment
NBLTD5	A6063S-T5	Clear Anodize
HBLTD5		
HBLTDB5	A6N01SS-T5	Black Anodize
CHBLTD5		Clear Paint (Anodize + Clear Paint)

Part Number	Mass (g)	Applicable Screw, T Nut		Allowable Load (N)	Unit Price	Volume Discount Rate
		Screw	T Nut			
NBLTD5	36	CBM5-10	4 HNTT5-5	4	1470	
HBLTD5						
HBLTDB5						
CHBLTD5						



Example



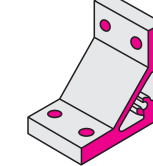
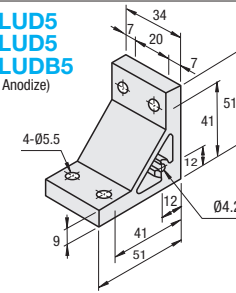
* For repairing black anodizing, refer to P.846.

■ **Features:** Thick Brackets with increased strength. Recommended for enhancing the strength without increasing procedural steps.

Ultra Thick Brackets

NBLUD5
HBLUD5
HBLUDB5

(Black Anodize)



⚠️ Both sides and screw holes of NBLUD5 is not anodized.

Type	Material	Surface Treatment
NBLUD5	A6063S-T5	Clear Anodize
HBLUD5		
HBLUDB5	A6N01SS-T5	Black Anodize

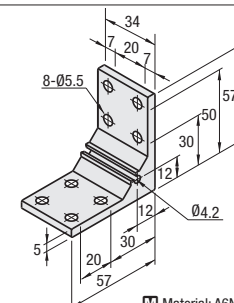
Part Number	Mass (g)	Applicable Screw, T Nut		Allowable Load (N)	Unit Price	Volume Discount Rate
		Screw	T Nut			
NBLUD5	75	CBM5-14	4 HNTT5-5	4	1470	
HBLUD5						
HBLUDB5						

* For repairing black anodizing, refer to P.846.

■ **Features:** Brackets for 2-slot extrusions with 4 mounting holes on one side can connect extrusions more securely.

Thick Brackets

HBLTDW5



Material: A6N01SS-T5 Surface Treatment: Clear Anodize

Part Number	Mass (g)	Applicable Screw, T Nut		Allowable Load (N)	Unit Price	Volume Discount Rate
		Screw	T Nut			
HBLTDW5	59	CBM5-10	8 HNTT5-5	8	2156	

Ordering Example
Part Number: HBLTD5

Alterations	Code	Spec.	Applicable Bracket
Applicable Screws and Nuts Set	SET SST	Applicable screws and nuts for fixing the brackets on extrusions come in a set. (Adds to the bracket price.)	
	SEU	(Ex.) When HBLTD5 is specified:	NBLTD5
	SSU	Code Screw Nut	
	SEP	SET CBM5-10 HNTT5-5	HBLTDB5
	SSP	SST SCB5-10 HNTTBS5-5	CHBLTD5
Mounting Hole Alteration for Cover	C	Adds taps on a bracket for cover mounting. (M5 on Both Sides, Depth 15mm) (Mounting Screw HCBM on P.754)	NBLUD5 HBLUD5 HBLUDB5 HBLTDW5

⚠️ Screws for black anodized brackets are HCBMTB (Trivalent Chromate Black) on P.751.

⚠️ Included Screw is not RoHS compliant when -SET, -SEU or -SEP other than black anodized brackets is specified.