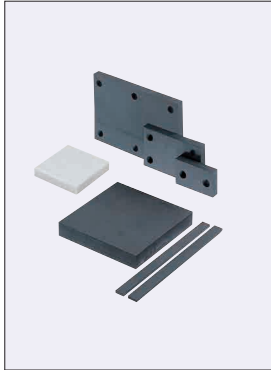


# Chloroprene / Non-Staining Chloroprene Rubber Sheets

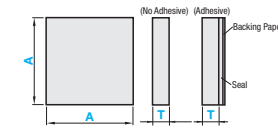
Chloroprene rubber excels in mechanical strength and alkali resistance. Non-staining chloroprene rubber which minimizes contamination from contacting materials is also available.  
 For Rubber Gaskets, see P455. For Rubber Blocks, see P422.



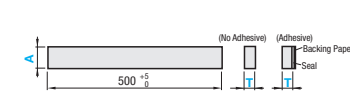
A Selectable Type		A, B Configurable Type		Material	Hardness	Color
No Adhesive	Adhesive	No Adhesive	Adhesive			
RBCM	RBCMA	RBCMF	RBCMFA	Chloroprene Rubber (CR)	Shore A65	Black
RBOM	RBOMA	RBOMF	RBOMFA	Non-Staining Chloroprene Rubber (CR)	Shore A60	Gray
RBCW	RBCWA	RBCWF	RBCWFA	Chloroprene Rubber (CR)	Shore A60	White

Adhesive thickness is 0.14 ~ 0.2mm.  
 For Adhesive Strength Data, see P438 (ADTR).  
 Temperature limit for seals is 80°C.

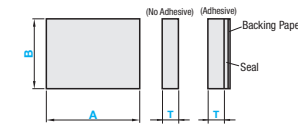
### Square Type



### Band Type



### A, B Configurable - Standard Type

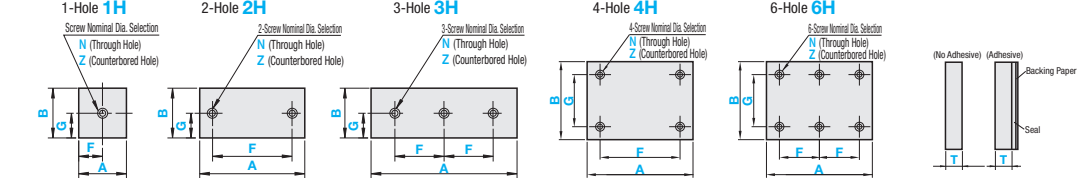


### Accuracy Standards

Tolerance	A, B Tolerance
T	A, B
0.5	200 or Less
±0.2	±0.5
1-3	201-300
±0.3	±1.0
5	301-500
±0.4	±1.5
10	
±0.6	
15-30	
+2.0	
-0.5	

Hole Machining Details	
N (Through Hole)	Z (Counterbored Hole)
Screw Nominal Dia. Selection	
3	4
5	6
8	10
d	3.5 4.5 5.5 6.5 9 12
d1	6.5 9 11 14 17.5
h	3.5 4.5 5.5 6.5 9 11

### A, B Configurable - Hole Type



For Adhesive Type T5 or more, the adhesive tape may tear from the body. Please use it as temporary fixing, or in combination with bolt fixing.  
 A, B dimension tolerance has been changed. Please refer to the accuracy standards above.

### Square Type

Part Number	A Selection
Type	T
No Adhesive	1
Adhesive	2
RBCM	3
RBCMA	5
RBOM	10
RBOMA	15
RBCW	20
RBCWA	30

### Band Type

Part Number	A Selection
Type	T
No Adhesive	1
Adhesive	2
RBCM	3
RBCMA	5
RBOM	10
RBOMA	15
RBCW	20
RBCWA	30

### A, B Configurable - Standard Type

Part Number	1mm Increment	A	B
Type	T	A	B
No Adhesive	1	10-500	10-500
Adhesive	2		
RBCMF	3		
RBCMFA	5		
RBOMF	10		
RBOMFA	15		
RBCWF	20		
RBCWFA	30		

T dimension 15 is not available for RBCW and RBCWA.

Dimension is 500mm.

A ≥ B ≥ T

T dimension 15 is not available for RBCWF and RBCWFA.

### A, B Configurable - Hole Type

Part Number	1mm Increment (A ≥ B ≥ T)	0.5mm Increment	Screw Nominal Dia. Selection
Type	Nominal	A	B
No Adhesive	1H	25-500	25-500
Adhesive	2H		
RBCMF	3H		
RBCMFA	4H		
RBOMF	5H		
RBOMFA	6H		
RBCWF			
RBCWFA			

A ≥ B ≥ T

Dimension F Specification Range: For 1H, 2H, 3H, 4H, 5H, 6H, 8H, 10H: d(d1)/2 + 2.5 ≤ F ≤ A - d(d1)/2 - 2.5, for 2H, 4H, 6H, 8H, 10H: d(d1) + 5 ≤ F ≤ A - d(d1) - 5, for 3H, 5H, 7H, 9H, 11H: d(d1) + 5 ≤ F ≤ A/2 - d(d1)/2 - 2.5.

Dimension G Specification Range: For 1H, 2H, 3H, 4H, 5H, 6H, 8H, 10H: d(d1)/2 + 2.5 ≤ G ≤ B - d(d1)/2 - 2.5, for 2H, 4H, 6H, 8H, 10H: d(d1) + 5 ≤ G ≤ B - d(d1) - 5, (d for through holes, d1 for counterbored holes).

### Ordering Example

Ordering Example

Part Number - A

RBCM5 - 100

RBOM10 - 500

A, B Configurable - Standard / Hole Type

Part Number - A - B - F - G - Screw Nominal Dia.

RBCMFA10 - 110 - 65

RBCMFA420 - 200 - 150 - F140 - G100 - Z5

### Square Type

Part Number	Unit Price
Type	A
No Adhesive	1
Adhesive	2
RBCM (x1.0)	3
RBCW (x1.7)	5
RBCMA (x1.3)	10
RBCWA (x1.9)	15
RBOM (x1.0)	2
RBOMA (x1.1)	3
RBOMF (x1.0)	5
RBOMFA (x1.1)	10
Material Multiplier	15
	20
	30

The price of this product is the unit price shown in the table multiplied by material multiplier.

(Ex.) Part Number - A - B (Unit Price) x (Material Multiplier) = Standard Type Unit Price  
 RBCMFA10 - 500 - 400

### Band Type

Part Number	Unit Price
Type	A
No Adhesive	1
Adhesive	2
RBCM (x1.0)	3
RBCW (x1.2)	5
RBCMA (x1.3)	10
RBCWA (x1.3)	15
RBOM (x1.0)	2
RBOMA (x1.1)	3
RBOMF (x1.0)	5
RBOMFA (x1.1)	10
Material Multiplier	15

T dimension 15 is not available for RBCW and RBCWA.

### A, B Configurable - Standard / Hole Type

The price of the Hole Type is found by adding the standard type unit price and the hole machining charge.

Part Number	Unit Price
Type	A
No Adhesive	10-100
Adhesive	101-200
RBCMF (x1.0)	201-300
RBCWF (x1.6)	301-400
RBCMFA (x1.3)	401-500
RBCWFA (x1.7)	10-100
	101-200
	201-300
	301-400
	401-500
	10-100
	101-200
	201-300
	301-400
	401-500
	10-100
	101-200
	201-300
	301-400
	401-500
	10-100
	101-200
	201-300
	301-400
	401-500
	10-100
	101-200
	201-300
	301-400
	401-500
	10-100
	101-200
	201-300
	301-400
	401-500

Part Number	Unit Price
Type	A
No Adhesive	10-100
Adhesive	101-200
RBOMF (x1.0)	201-300
RBOMFA (x1.1)	301-400
	401-500
	10-100
	101-200
	201-300
	301-400
	401-500
	10-100
	101-200
	201-300
	301-400
	401-500
	10-100
	101-200
	201-300
	301-400
	401-500
	10-100
	101-200
	201-300
	301-400
	401-500

Alterations

Part Number - A - B - F - G - Screw Nominal Dia. - (XC, YC)

RBCMFA45 - 100 - 80 - F65 - G40 - N4 - YC30

Code	XC	YC
Spec.	XC=1mm Increment 5 ≤ XC ≤ 486 (Non-contaminating chloroprene rubber T15 or larger is available up to 286.) d(d1)/2 + 2.5 ≤ XC ≤ A - F - d(d1)/2 - 2.5 (2H, 4H Types) d(d1)/2 + 2.5 ≤ XC ≤ A - F - d(d1)/2 - 2.5 (3H, 6H Types) d(d1)/2 + 2.5 ≤ XC ≤ A - 2F - d(d1)/2 - 2.5	YC=1mm Increment 5 ≤ YC ≤ 486 (Non-contaminating chloroprene rubber T15 or larger is available up to 286.) d(d1)/2 + 2.5 ≤ YC ≤ B - G - d(d1)/2 - 2.5

T dimension 15 is not available for RBCWF and RBCWFA.

Yellowing of White Rubber: Please note upon application that yellowing is more pronounced compared to black rubber.

(Ex.) Part Number - A - B - F - G - Screw Nominal Dia. - Z3  
 RBCMFA410 - 200 - 180 - F160 - G140 - Z3

### Hole Machining Charge

Hole Type	Screw Nominal
1H	
2H	
3H	
4H	
6H	