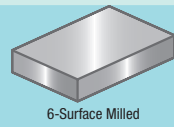


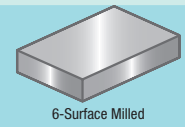
Configurable Plates - Duralumin Price List

A2017P (Al-Cu Aluminum Alloy)



Configurable Plates - ANP79

A7000 (Al-Zn-Mg-Cu Aluminum Alloy)



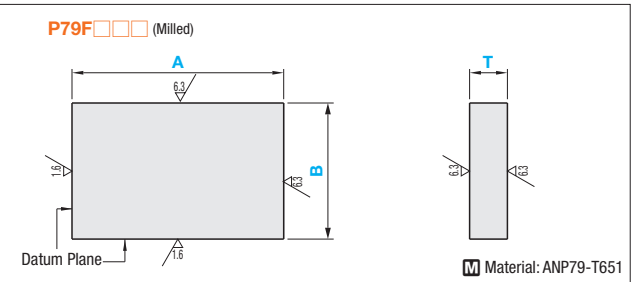
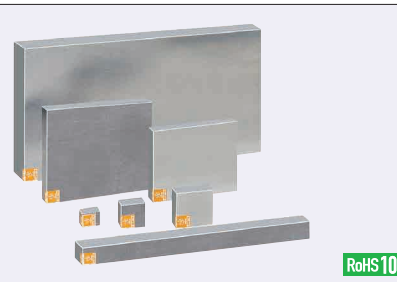
(Ex.) For L-PDFNM-1000-700-15

A Dimension x Area Unit Price = Price

Large Size L-PDF (6-Surface Milled) A, B, T: 0.5mm Increment

Part Number	A	B	T	5-7.5	8-9.5	10-11.5	12-14.5	15-17.5	18-19.5	20-21.5	22-24.5	25-29.5	30-34.5	35-39.5	40-50		
	500.5~ 600	250.5~300		-	-	-	-	-	-	-	-	-	-	-	-		
	600.5~ 700			-	-	-	-	-	-	-	-	-	-	-	-	-	-
	700.5~ 800			-	-	-	-	-	-	-	-	-	-	-	-	-	-
	800.5~ 900			-	-	-	-	-	-	-	-	-	-	-	-	-	-
	900.5~ 1000			-	-	-	-	-	-	-	-	-	-	-	-	-	-
	1000.5~ 1200	300.5~350		-	-	-	-	-	-	-	-	-	-	-	-		
	1200.5~ 1400			-	-	-	-	-	-	-	-	-	-	-	-	-	-
	1400.5~ 1600			-	-	-	-	-	-	-	-	-	-	-	-	-	-
	300.5~ 400			-	-	-	-	-	-	-	-	-	-	-	-	-	-
	400.5~ 500			-	-	-	-	-	-	-	-	-	-	-	-	-	-
	500.5~ 600	350.5~400		-	-	-	-	-	-	-	-	-	-	-	-		
	600.5~ 700			-	-	-	-	-	-	-	-	-	-	-	-	-	-
	700.5~ 800			-	-	-	-	-	-	-	-	-	-	-	-	-	-
	800.5~ 900			-	-	-	-	-	-	-	-	-	-	-	-	-	-
	900.5~ 1000			-	-	-	-	-	-	-	-	-	-	-	-	-	-
	1000.5~ 1200	400.5~450		-	-	-	-	-	-	-	-	-	-	-	-		
	1200.5~ 1400			-	-	-	-	-	-	-	-	-	-	-	-	-	-
	1400.5~ 1600			-	-	-	-	-	-	-	-	-	-	-	-	-	-
	400.5~ 500			-	-	-	-	-	-	-	-	-	-	-	-	-	-
	500.5~ 600			-	-	-	-	-	-	-	-	-	-	-	-	-	-
	600.5~ 700	450.5~500		-	-	-	-	-	-	-	-	-	-	-	-		
	700.5~ 800			-	-	-	-	-	-	-	-	-	-	-	-	-	-
	800.5~ 900			-	-	-	-	-	-	-	-	-	-	-	-	-	-
	900.5~ 1000			-	-	-	-	-	-	-	-	-	-	-	-	-	-
	1000.5~ 1200			-	-	-	-	-	-	-	-	-	-	-	-	-	-
	1200.5~ 1400	500.5~550		-	-	-	-	-	-	-	-	-	-	-	-		
	1400.5~ 1600			-	-	-	-	-	-	-	-	-	-	-	-	-	-
	500.5~ 600			-	-	-	-	-	-	-	-	-	-	-	-	-	-
	600.5~ 700			-	-	-	-	-	-	-	-	-	-	-	-	-	-
	700.5~ 800			-	-	-	-	-	-	-	-	-	-	-	-	-	-
	800.5~ 900	550.5~600		-	-	-	-	-	-	-	-	-	-	-	-		
	900.5~ 1000			-	-	-	-	-	-	-	-	-	-	-	-	-	-
	1000.5~ 1200			-	-	-	-	-	-	-	-	-	-	-	-	-	-
	1200.5~ 1400			-	-	-	-	-	-	-	-	-	-	-	-	-	-
	1400.5~ 1600			-	-	-	-	-	-	-	-	-	-	-	-	-	-
	600.5~ 700	600.5~650		-	-	-	-	-	-	-	-	-	-	-	-		
	700.5~ 800			-	-	-	-	-	-	-	-	-	-	-	-	-	-
	800.5~ 900			-	-	-	-	-	-	-	-	-	-	-	-	-	-
	900.5~ 1000			-	-	-	-	-	-	-	-	-	-	-	-	-	-
	1000.5~ 1200			-	-	-	-	-	-	-	-	-	-	-	-	-	-
	1200.5~ 1400	650.5~700		-	-	-	-	-	-	-	-	-	-	-	-		
	1400.5~ 1600			-	-	-	-	-	-	-	-	-	-	-	-	-	-
	650.5~ 700			-	-	-	-	-	-	-	-	-	-	-	-	-	-
	700.5~ 800			-	-	-	-	-	-	-	-	-	-	-	-	-	-
	800.5~ 900			-	-	-	-	-	-	-	-	-	-	-	-	-	-
	900.5~ 1000	700.5~800		-	-	-	-	-	-	-	-	-	-	-	-		
	1000.5~ 1200			-	-	-	-	-	-	-	-	-	-	-	-	-	-
	1200.5~ 1400			-	-	-	-	-	-	-	-	-	-	-	-	-	-
	1400.5~ 1600			-	-	-	-	-	-	-	-	-	-	-	-	-	-
	700.5~ 800			-	-	-	-	-	-	-	-	-	-	-	-	-	-
	800.5~ 900	-	-	-	-	-	-	-	-	-	-	-	-	-	-		
	900.5~ 1000	-	-	-	-	-	-	-	-	-	-	-	-	-	-		
	1000.5~ 1200	-	-	-	-	-	-	-	-	-	-	-	-	-	-		
	1200.5~ 1400	-	-	-	-	-	-	-	-	-	-	-	-	-	-		
	1400.5~ 1600	-	-	-	-	-	-	-	-	-	-	-	-	-	-		

L-PDF (6-Surface Milled)



Part Number				0.5mm Increment		
Type	Upper-Lower Surface Finish	① Plate Thickness Tolerance	② A, B Dimension Tolerance	A	B	T
P79	F (Milled)	P Q N M	P Q N M	25~500	20~300	7~50

① Plate Thickness Tolerance

T	P	Q	N	M
Tolerance	+0.1~+0.3	0~0.2	±0.1	-0.2~0

② A, B Dimension Tolerance

A, B Length	P	Q	N	M
250mm or Less	+0.1~+0.3	0~+0.2	±0.1	-0.2~0
250.5~500mm	+0.1~+0.6	0~+0.5	±0.25	-0.5~0

Precision Standards (Max. Value)

Item	Upper-Lower Surface Finish	
	Tolerance	Item
Thickness Parallelism (per 100mm)	T7~12.5	0.05
	T13~15.5	0.07
	T21~50	0.1
Flatness (per 100mm)	T7~8.5	0.15
	T9~12.5	0.13
	T13~20.5	0.12
Perpendicularity of Datum Plane	T21~50	0.1
	Circumference Chamfering	CO.3 or Less



Ordering Example: Part Number P79 F Q M - 255 - 220 - 18

(Ex.) For P79FQM-255-220-18
A Dimension x Area Unit Price = Price

Part Number	A	B	T	7~10	10.5~15	15.5~20	20.5~25	25.5~30	30.5~35	35.5~40	40.5~45	45.5~50
P79F (Milled)	25 ~ 50	20~50										
	50.5~ 75											
	75.5~ 100											
	100.5~ 250											
	50.5~ 75											
	75.5~ 100											
	100.5~ 200											
	200.5~ 500											
	75.5~ 100											
	100.5~ 200											
	200.5~ 300											
	300.5~ 500											
	100.5~ 250											
	250.5~ 500											
	125.5~ 300											
	300.5~ 500											
	150.5~ 300											
	300.5~ 500											
	160.5~ 200											
	200.5~ 500											
200.5~ 250												
250.5~ 300												



Alterations: Part Number A - B - T (-CSC, CBC, CCA... etc.)
P79FNM - 300 - 280 - 20 - CSC

Code	Circumference Chamfering		Corner Cut	
	Size	Standards	Modified Value	Code
Spec.	Reduce the circumference chamfering dimension.	Standard CO.3 or Less	CO.5~C1.0	CBC
	Standard CO.3 or Less → CO.1 or Less		CO.2~CO.5	CBB
			CO.5~C1.0	CBC
			C1.0~C1.5	CBD
		C1.5~C2.0	CBE	

④ Sizes larger than plate thickness 50 and precision tolerance are only available on "Material Shop 24 Website". For details, see P.1697.