

Hinge Bases

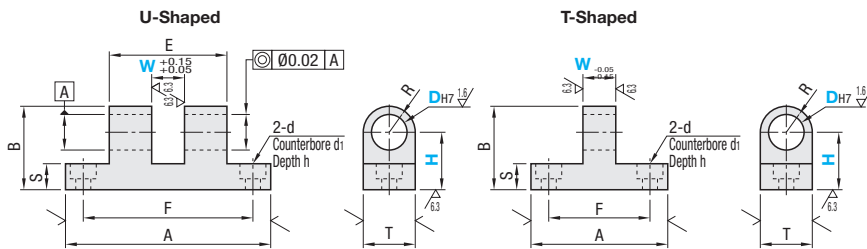
H Compact

■ Features: Compact in Height and Space-Saving Design.



RoHS10

U-Shaped		T-Shaped		Material	Surface Treatment
W Fixed	W and H Configurable	W Fixed	W and H Configurable		
HKHJB	HGHJB	HKHHB	HGHHB	S45C	Black Oxide
HKHJM	HGHJM	HKHJM	HGHJM	Equivalent	Electroless Nickel Plating
HKHJS	-	HKHHS	-	SUS304	-



U-Shaped

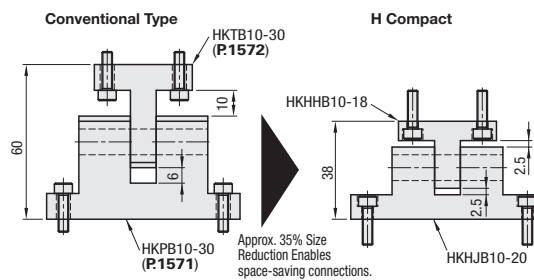
Part Number	Type	DH7	W		H		A	F	B (H+R)	E	S	T	R (T/2)	d1	d	h	Unit Price				
			Standard	1mm Increment	1mm Increment	1mm Increment											W Fixed	W and H Configurable			
W Fixed HKHJB HKHJM HKHJS	3	6	3-8	12-20	32	24	H+4.5	14	5.5	9	4.5	6.5	3.5	3.5							
	4	8	4-12	16-25	38	30	H+6	25	7.5	12	6	8	4.5	4.5							
	5	10	5-15	20-30	50	40	H+8	28	9.5	16	8	8	4.5	4.5							
	6	12	6-14	21-35	65	52	H+9.5	38	11.5	19	9.5	9.5	5.5	5.5							
	8	16	8-24	24-35	75	62	H+12.5	43	12.5	25	12.5	11	6.5	6.5							
	10	20	10-23	26-40	100	84	H+15	65	15	30	15	11	6.5	6.5							
	12	25	12-23	30-45			H+16		16	32	16										
	13	12	13-23																		
	14	14	14-23																		
	15	15	15-23																		
16	16	16-23																			
20	20	20-30																			
25	30	25-35																			

T-Shaped

Part Number	Type	DH7	W		H		A	F	B (H+R)	S	T	R (T/2)	d1	d	h	Unit Price				
			Standard	1mm Increment	1mm Increment	1mm Increment										W Fixed	W and H Configurable			
W Fixed HKHHB HKHJM HKHHS	3	6	3-6	12-20	25	15	H+4.5	5.5	9	4.5	6.5	3.5	3.5							
	4	8	4-8	16-25	32	22	H+6	7.5	12	6	8	4.5	4.5							
	5	10	5-10	18-30	38	27	H+8	9.5	16	8	8	4.5	4.5							
	6	12	6-12	21-35	50	37	H+9.5	11.5	19	9.5	9.5	5.5	5.5							
	8	16	8-16	24-35	65	49	H+12.5	12.5	25	12.5	11	6.5	6.5							
	10	20	10-16	26-40																
	12	25	12-16	30-45																
	13	12	13-24																	
	14	14	14-24																	
	15	15	15-24																	
16	16	16-24																		
20	20	20-30																		
25	30	25-35																		

Ordering Example
Part Number - W - H
HGHJM16 - W20 - H27
HKHHB10 - W12 - H18

■ Comparison when connecting T-Shaped Type and U-Shaped Type



Hinge Bases

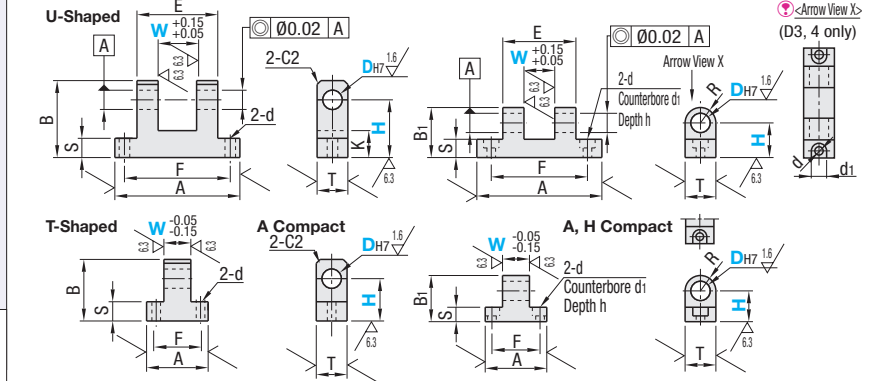
A Compact / A, H Compact

■ Features: A dimension (lateral direction) is more compact than conventional hinges. For A, H Compact, H dimension (lengthwise direction) is also compacted.



RoHS10

A Compact		A, H Compact		Material	Surface Treatment
U-Shaped	T-Shaped	U-Shaped	T-Shaped		
HGAAJB	HGAAB	HGHAJB	HGHAB	S45CEquivalent	Black Oxide
HGAAJM	-	HGHAJM	HGHAM	Equivalent	Electroless Nickel Plating
HGAAJS	-	HGHAJS	-	SUS304	-



For A, H Compact U-Shaped Type, when choosing Dh7=3-4, no counterbore shown as <Arrow View>. (When Dh7=5 or more, with counterbore)

U-Shaped

Part Number	Type	DH7	W		H		A	F	B	B1 (H+R)	E	K	S	T	R (T/2)	d1	d	h
			1mm Increment	1mm Increment	A Compact	A, H Compact												
A Compact HGAAJB HGAJM HGAJS	3	6	3-6	11-20	25	20	H+5	H+4.5	12	18 (17)	10	5 (5.5)	9	4.5	6.5	3.5	3.5	
	4	8	4-10	16-25	32	25	H+6	H+6	22	22	12	6	6.5	4.5 (3.5)	3.5			
	5	10	5-12	19-25	38	30	H+8	H+8	30	30	14	10 (9.5)	16	8	8	5.5 (4.5)	4.5	
	6	12	6-18	25-30	50	40	H+10	H+9.5	42 (38)	42 (38)	15	15 (11.5)	25 (30)	15	11	9 (6.5)	6.5	
	8	16	8-25 (20)	26-35	65	55 (50)	H+12	H+12.5	45	45	18	18	30 (32)	16	11	9 (6.5)	6.5	
	10	20	10-25 (20)	27-35	75	60	H+14	H+15	45	45	18	18	30 (32)	16	11	9 (6.5)	6.5	
	12	25	12-25 (20)	28-35														
	13	12	13-25 (20)															
	14	14	14-25 (20)															
	15	15	15-25 (20)															
16	16	16-25 (20)																
20	20	20-25																
25	30	25-25																

T-Shaped

Part Number	Type	DH7	W		H		A	F	B	B1 (H+R)	S	T	R (T/2)	d1	d	h	
			1mm Increment	1mm Increment	A Compact	A, H Compact											
A Compact HGAAB	3	6	3-6	11-20	22	15	H+5	H+4.5	5 (5.5)	9	4.5	6.5	3.5	3.5			
	4	8	4-10	16-25	25	18	H+6	H+6	12	6	4.5 (3.5)	3.5					
	5	10	5-10	19-25	32	25	H+8	H+8	22	22	12	6	6.5	4.5 (3.5)			
	6	12	6-16 (15)	25-30	38	30	H+10	H+9.5	30	30	14	10 (9.5)	16	8	8	5.5 (4.5)	4.5
	8	16	8-16 (15)	26-35	50	40	H+12	H+12.5	42 (38)	42 (38)	15	15 (11.5)	25 (30)	15	11	9 (6.5)	6.5
	10	20	10-16 (15)	27-35	65	55 (50)	H+14	H+15	45	45	18	18	30 (32)	16	11	9 (6.5)	6.5
	12	25	12-20 (18)	28-35	75	60	H+16	H+16	45	45	18	18	30 (32)	16	11	9 (6.5)	6.5
	13	12	13-20 (18)														
	14	14	14-20 (18)														
	15	15	15-20 (18)														
16	16	16-20 (18)															
20	20	20-25															
25	30	20-25															

Ordering Example
Part Number - W - H
HGHAJS10 - W20 - H18
HGAAB10 - W12 - H30

Comparison of A Dimensions

DH7	U-Shaped A Compact				T-Shaped A Compact				U-Shaped A, H Compact				T-Shaped A, H Compact			
	Standard (P.1571)	A Compact	Reduction Ratio	Standard (P.1572)	A Compact	Reduction Ratio	Standard (P.1571)	A Compact	Reduction Ratio	Standard (P.1572)	A Compact	Reduction Ratio	Standard (P.1571)	A Compact	Reduction Ratio	
3	32	25	-22%	25	22	-12%	32	25	-22%	25	22	-12%	25	22	-12%	
4	38	32	-16%	32	25	-34%	38	32	-16%	38	32	-16%	38	32	-16%	
5	50	38	-24%	32	25	-22%	50	38	-24%	50	38	-24%	50	38	-24%	
6	65	50	-23%	38	32	-16%	65	50	-23%	65	50	-23%	65	50	-23%	
8	75	65	-13%	50	38	-24%	75	65	-13%	75	65	-13%	75	65	-13%	
10	100	75	-25%	65	50	-23%	100	75	-25%	100	75	-25%	100	75	-25%	

DH7	Unit Price					
	U-Shaped			T-Shaped		
	A Compact	A, H Compact	H Compact	A Compact	A, H Compact	H Compact
3, 4	HGAAJB	HGAJM	HGAJS	HGHAJB	HGHJM	HGHAM
5, 6						
8, 10						
12-14						
15, 16						
20						
25						