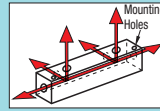


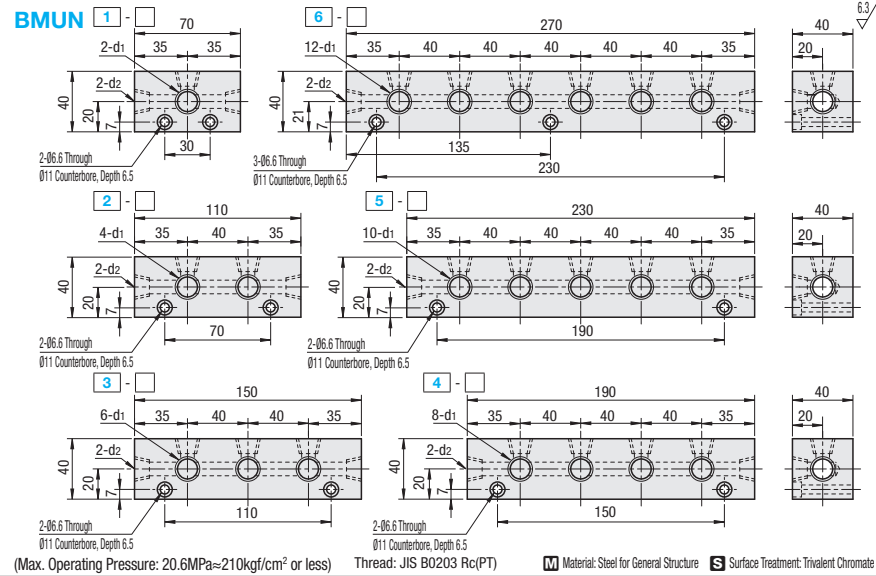
Manifold Blocks - Hydraulic / Pneumatic

Lateral Through Hole, L-Shaped Hole



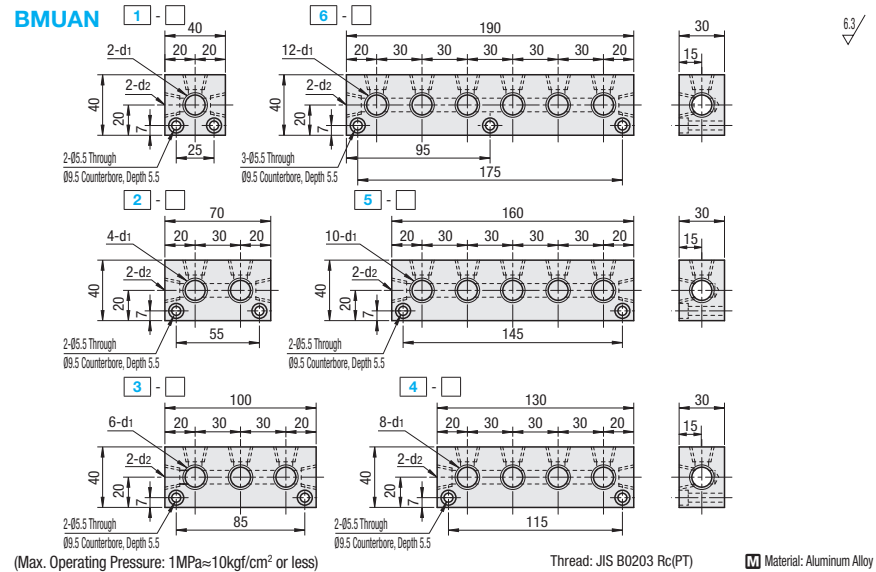
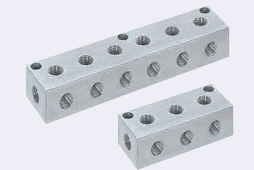
For details of recommended tapered male thread tightening torque and through pilot hole, see P.1224.

Manifold Blocks - Hydraulic



RoHS10

Manifold Blocks - Pneumatic



RoHS10

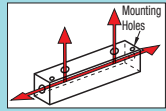
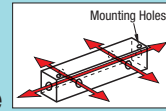
Part Number	Type	No.	d1 Rc(PT)	d2 Rc(PT)	Unit Price
BMUN	1	33	3/8	3/8	
		13	1/8	3/8	
	2	22	1/4	1/4	
		23	1/4	3/8	
		34	3/8	1/2	
		22	1/4	1/4	
	3	23	1/4	3/8	
		33	3/8	3/8	
		12	1/8	1/4	
	4	22	1/4	1/4	
		23	1/4	3/8	
		23	1/4	3/8	
5	23	1/4	3/8		
	34	3/8	1/2		

Part Number	Type	No.	d1 Rc(PT)	d2 Rc(PT)	Unit Price
BMUAN	1	22	1/4	1/4	
		11	1/8	1/4	
	2	12	1/8	1/4	
		22	1/4	1/4	
		11	1/8	1/8	
		12	1/8	1/4	
	3	22	1/4	1/4	
		12	1/8	1/4	
		22	1/4	1/4	
	4	12	1/8	1/4	
		22	1/4	1/4	
		12	1/8	1/4	
5	22	1/4	1/4		
	12	1/8	1/4		
6	22	1/4	1/4		

Ordering Example
Part Number
BMUN2-22
BMUAN4-22

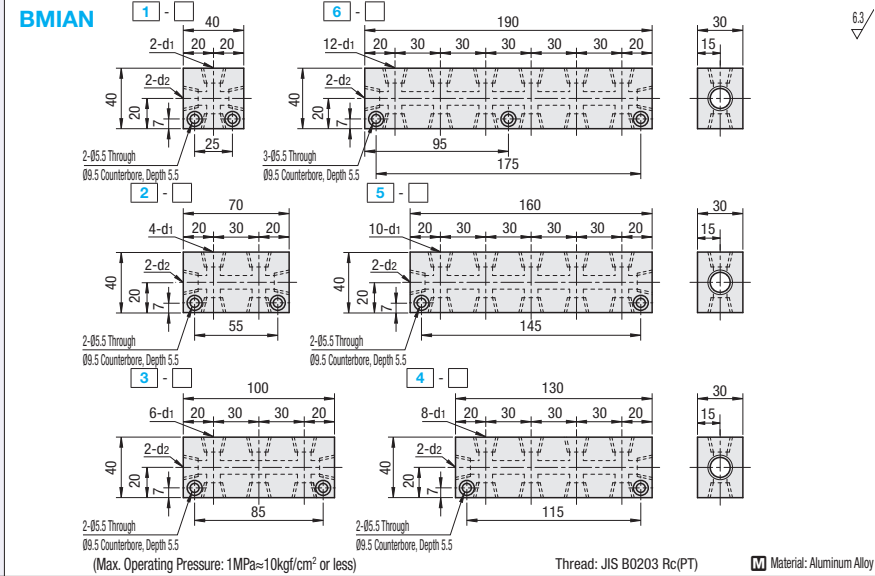
Manifold Blocks - Pneumatic

Lateral and Vertical Through Hole / Lateral Through Hole, Upper Hole



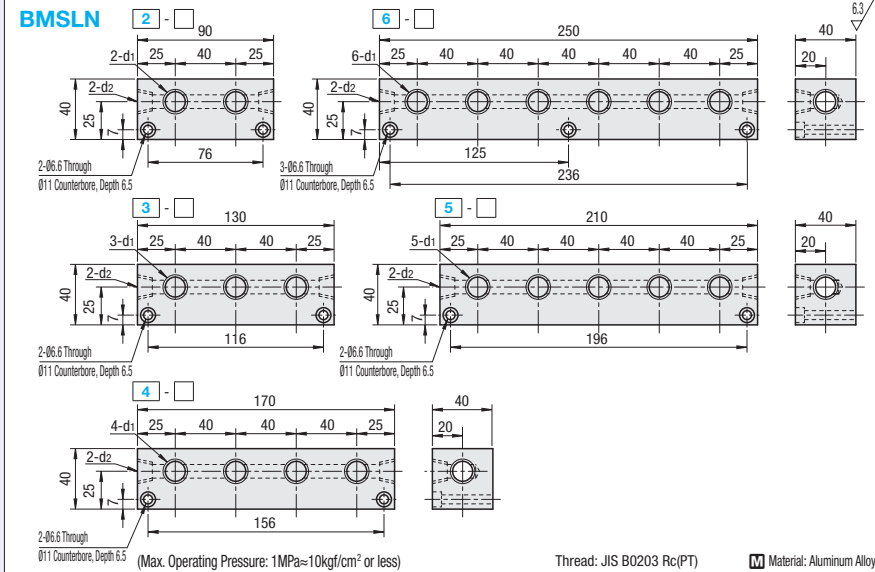
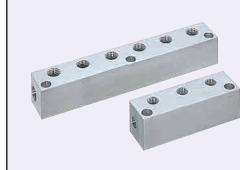
For details of recommended tapered male thread tightening torque and through pilot hole, see P.1224.

Manifold Blocks - Pneumatic



RoHS10

Manifold Blocks - Pneumatic



RoHS10

Part Number	Type	No.	d1 Rc(PT)	d2 Rc(PT)	Unit Price
BMIAN	1	11	1/8	1/8	
		22	1/4	1/4	
	2	11	1/8	1/8	
		12	1/8	1/4	
		22	1/4	1/4	
		11	1/8	1/8	
	3	11	1/8	1/8	
		22	1/4	1/4	
		11	1/8	1/8	
	4	12	1/8	1/4	
		22	1/4	1/4	
		12	1/8	1/4	
5	12	1/8	1/4		
	22	1/4	1/4		
6	11	1/8	1/8		

Part Number	Type	No.	d1 Rc(PT)	d2 Rc(PT)	Unit Price
BMSLN	2	24	1/4	1/2	
		33	3/8	3/8	
	3	44	1/2	1/2	
		33	3/8	3/8	
	4	44	1/2	1/2	
		23	1/4	3/8	
		24	1/4	1/2	
		33	3/8	3/8	
	5	44	1/2	1/2	
		33	3/8	3/8	
		44	1/2	1/2	
	6	23	1/4	3/8	

Ordering Example
Part Number
BMIAN3-22