

# Casters

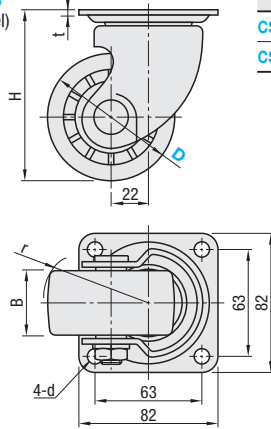
Medium and Heavy Load / Heavy Load

# Casters

Heavy Load / Super Heavy Load

## Medium and Heavy Load

**CSHN-S**  
**CSHNS-S**  
(Stainless Steel)



Type	Main Body		Wheel	Bearing	
	Material	Surface Treatment	Material (Color)	Swiveling Part	Wheel
CSHN-S	SPHC	Trivalent Chromate	Reinforced Plastic (Black)	Incorporated	Incorporated
CSHNS-S	SUS304	-	Phenol (Black) MC Nylon (Blue)	Incorporated	Incorporated



RoHS 10

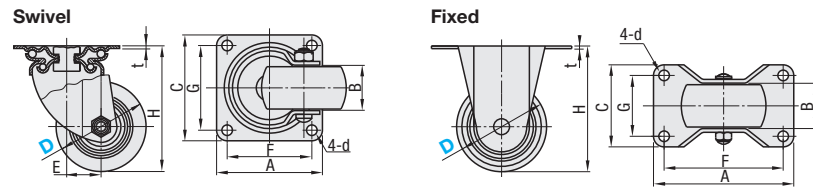
Main Body	Part Number		Wheel Material	H	d	r	B	t	Allowable Load (N)	Mass (g)	Unit Price				
	Type	D									H	P	N		
Swivel	CSHN-S	50	H (Reinforced Plastic) P (Phenol) N (MC Nylon)	79	8.8	49	38	3.2	3000	700					
		65									56	40			
		75									61	40			
	CSHNS-S	50		79	8.8	49	38	3.0	2500	670					
		65									56	40			
		75									61	40			

## Heavy Load



RoHS 10

Type	Main Body		Wheel	Bearing
	Material	Surface Treatment	Material (Color)	
Swivel	SPHC	Trivalent Chromate	Special Reinforced Plastic (Black) MC Nylon (Blue)	Incorporated
Fixed	CKH			
	CKHB			



## Swivel

Part Number	D	B (Wheel Mount Width)	H	A	C	F	G	d	E	t	Allowable Load N	Unit Price		
												CJH	CJHB	
CJH CJHB	*50	28	29	68	70	54	54	36	6.5	25	2.3	1569		
	65			92	90	90	71	71	10.5	30	3.2	2942		
	75	38	39	106	90	90	71	71	10.5	30	3.2	3923		

## Fixed

Part Number	D	B (Wheel Mount Width)	H	A	C	F	G	d	t	Allowable Load N	Unit Price		
											CKH	CKHB	
CKH CKHB	*50	28	29	68	80	50	66	36	6.5	2.3	1569		
	65			92	111	67	91	47	10.5	3.2	2942		
	75	38	39	106	123	72	103	52	10.5	3.2	3923		

\* Only CJH50 and CKH50 have no bearings.

Kgf (Load)=Nx0.101972

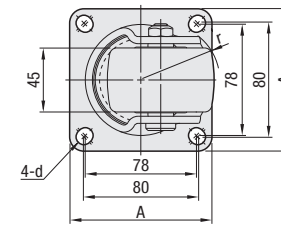
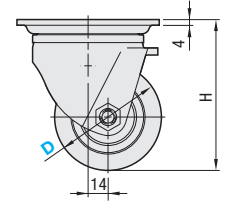
Ordering Example: Part Number - Wheel Material  
CSHN-S75 - H  
CJH75 - H

## Heavy Load

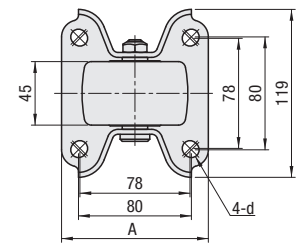
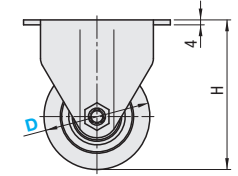


RoHS 10

Swivel  
**CSHN**



Fixed  
**CSHK**



Main Body	Wheel	Bearing		
			Material	Surface Treatment
SPHC	Trivalent Chromate	Reinforced Nylon (Black)	Incorporated	Incorporated

Main Body	Part Number		Wheel Material	H	A	d	r	Allowable Load (N)	Mass (g)	Unit Price
	Type	D								
Swivel	CSHN	65	N (Reinforced Nylon)	92	100	11	50	6000	1700	
		75		106						55
Fixed	CSHK	65	N (Reinforced Nylon)	92	104	11	-	6000	1300	
		75		106						-

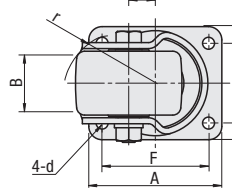
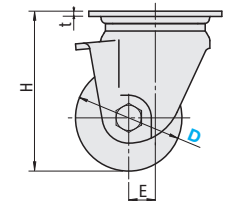
## Super Heavy Load



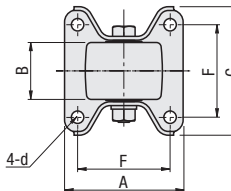
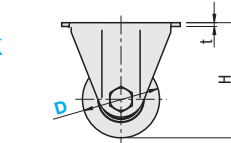
RoHS 10

Part Number	D	Main Body		Wheel	Seal	Bearing
		Material	Surface Treatment	Material (Color)	Material	Swiveling Part
CKZJ	50	SPHC	Trivalent Chromate	Reinforced Plastic (Black)	Polypropylene	Incorporated (Double Ball Bearing)
CKZK	65, 75			Phenol (Black)		Incorporated (Needle Bearing)
CKZJ	80, 100			MC Nylon (Blue) Electrically Conductive MC Nylon (Black) MC Nylon (Black)		

Swivel  
**CKZJ**

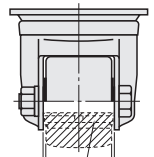


Fixed  
**CKZK**



\* The dimensions in ( ) are for D80 and 100.

**EX** Example



Needle Bearing

Excels in load capacity as needle bearings are used for wheel bearings.

Main Body	Part Number		Wheel Material	B	H	A	C	F	G	d	t	E	r	Allowable Load (N)	Mass (g)	Unit Price			
	Type	D														H	P	N	D
Swivel	CKZJ	50	H (Reinforced Plastic) P (Phenol) N (MC Nylon)	38	79	84	-	64	8.5	3.2	12	47	47	4000	820				
		65												5000	1540				
		75												6000	1625				
		*80												8000	1680				
		*100												9000	2160				
														4000	550				
Fixed	CKZK	50	D (Electrically Conductive MC Nylon)	48	97	100	108	78	10.5	3.2	-	-	-	5000	1000				
		65												6000	1060				
		75												6000	1060				

\* The wheel material for D80 and 100 type is N (MC nylon) only. D80 and 100 type can also be pulled by a powered mover if the operational speed is under 2km/h.

Ordering Example: Part Number - Wheel Material  
CSHN65 - N  
CKZJ65 - P