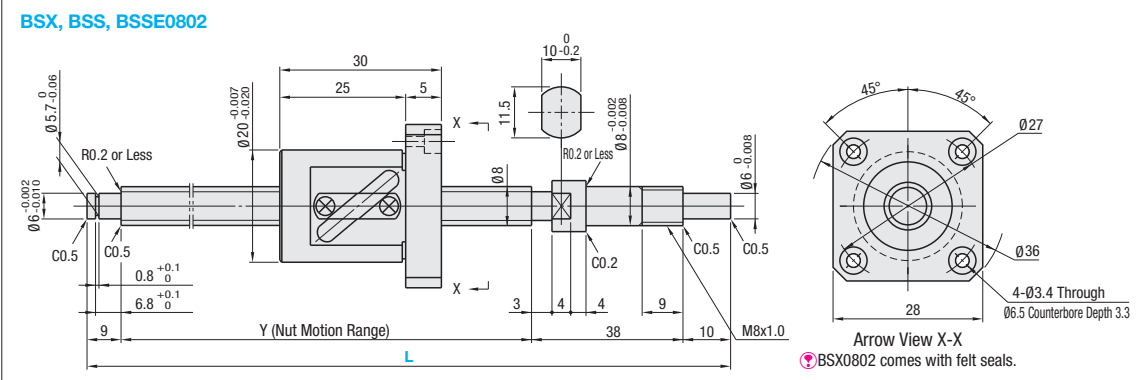
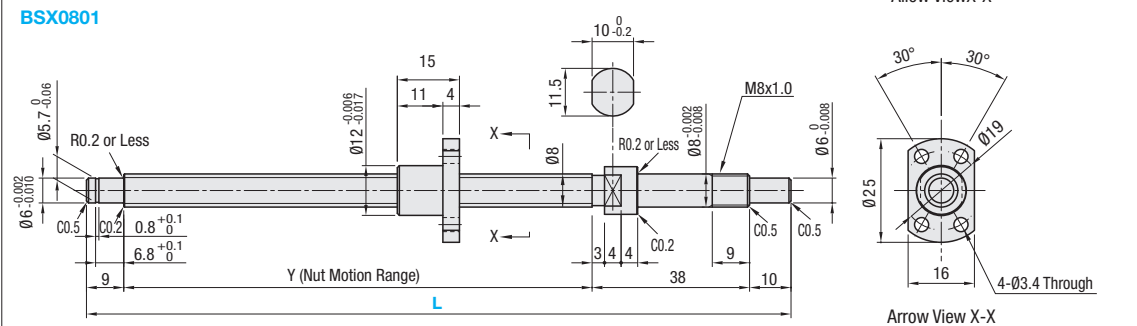
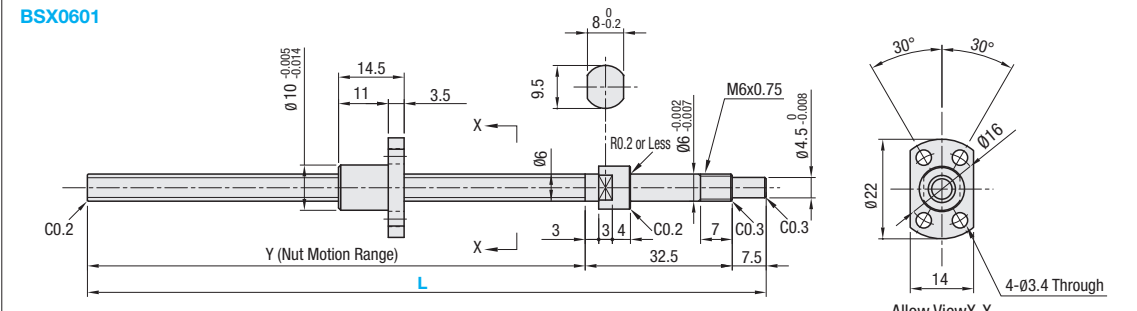


Precision Ball Screws Compact Nut - Shaft Dia. 6, 8, Lead 1, 2

Accuracy Grade C3, C5, C7

Points of comparison between similar products | Consider using this product if the usage environment is a high-load, and high-frequency drive application.

Nut Type	Type	Accuracy Grade	Shaft Dia.	Lead	Screw Shaft		Nut	
					Material	Hardness	Material	Hardness
Compact Nut	BSX	C3	6, 8	1, 2	SCM415	Carburized 58-62HRC	SCM420	Carburized 58-62HRC
Standard Nut	BSS BSSE	C5 C7	8	2				



Nut Type	Accuracy Grade	Part Number		1mm Increment L	Y	Ball Dia.	Ball Center Dia.	Screw Root Dia.	Number of Circuits	Basic Load Rating		Axial Play	Preload Torque N·cm	Twisting Direction
		Type	Lead							C (Dynamic) kN	Co (Static) kN			
Compact Nut	C3	BSX	06 01	80~205	L-40	0.800	6.24	(5.3)	1 turn, 3 rows	0.55	1.15	0 (Preloaded)	1.3 or Less	Right
			08 01	80~255						0.65	1.6		1.8 or Less	
Standard Nut	C5	BSS	08 02	100~240	L-57	1.5875	8.3	(6.6)	2.5 turns, 1 row	1.22	1.3	0.005 or Less	0.3~2.6	
				100~210						1.95	2.6	0.030 or Less	-	

kgf=Nx0.101972

Nut Type	Accuracy Grade	Part Number	Unit Price 1 ~ 4 pc(s).					
			L80-99	L100-160	L161-205	L206-210	L211-240	L241-255
Compact Nut	C3	BSX0601						
		BSX0801						
		BSX0802	-					
Standard Nut	C5	BSS0802	-					
		BSSE0802	-					

Ordering Example: Part Number - L
 BSX0601 - 185
 BSS0802 - 200
 BSS0802L - 210 (L Type Greased)
 BSS0802G - 210 (G Type Greased)

Notes

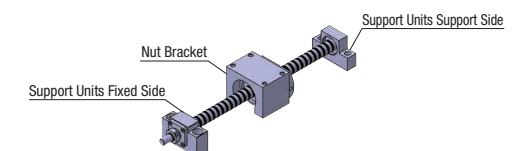
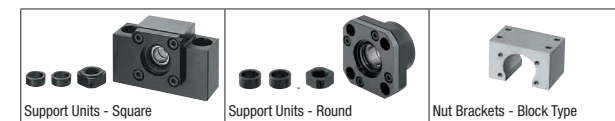
- Filled with lithium soap based grease (Alvania Grease S2 made by Showa Shell Sekiyu K.K.) (BSX is filled with Multemp Grease PS2 made by Kyodo Yushi Co., Ltd.)
- Caution: Do not let the nuts overrun or remove the nuts from the screw shafts. It may cause the balls to fall out or damage the ball recirculation parts.
- Various grease options are available. For price and specifications, see P.686. BSX is not applicable.
- For accuracy of Ball Screws, see P.2223 and P.2224.
- For details of Support Units, see P.753~P.778.
- Use one of the support unit accessory collars on the fastening nut side.

Alterations: Part Number - L - (FC, KC ... etc.)
 BSS0802 - 190 - KC3

Alterations	Code	Spec.
No Machining on Support Side Shaft End	NC	No machining added on the support side shaft end. Ordering Code: NC BSX0601 is not applicable.
Ball Nut Orientation Reversed	RLC	Changes the nut direction. Ordering Code: RLC
No Retaining Ring Groove on Support Side Shaft End	RNC	No Retaining Ring Groove on Support Side Shaft End. Ordering Code: RNC Combination with FC is not available. BSX0601 is not applicable.
Change Support Side Shaft End Length	FC	Changes the length of the support side shaft end. FC=1mm Increment Ordering Code: FC20 10≤FC≤20 Y dimension is shortened. BSX0601 and 0801 are not applicable.

Alterations	Code	Spec.
Keyway on Fixed Side Shaft End	KC	Adds a keyway on the fixed side shaft end. KC=1mm Increment Ordering Code: KC6 3≤KC≤9 BSX0601 is not applicable.
Keyway on Fixed Side Shaft End	KLC	Adds a keyway at a customer specified area on the fixed side shaft end. (Keyway dim. is same as KC.) K, S=1mm Increment Ordering Code: KLC-K5-S1 4≤K+S≤9 BSX0601 is not applicable.
Flat Machined on Fixed Side Shaft End	SC	Adds a flat on the fixed side shaft end. SC=1mm Increment Ordering Code: SC7 5≤SC≤6 (BSX0601) 5≤SC≤9 (BS0801, 0802)
2 Flats Machined on Fixed Side Shaft End	SWC SGC	Adds two flats on the fixed side shaft end. SWC: 90° Position SGC: 120° Position 1mm Increment Ordering Code: SWC6 5≤SWC, SGC≤6 (BSX0601) 5≤SWC, SGC≤9 (BS0801, 0802)

Peripherals: Combination of the following parts is available.



Combination with Support Units

Ball Screw Part Number	Recommended Support Unit				
	Type	Screw Shaft O.D.	Lead	Part Number	Page
BSX BSS BSSE	06	01	BRW	6	P.767
			BSW	6	P.761
			BRW	8	P.767
			BUR	6	P.768
	08	01	BSW	8	P.761
			BUN	8	P.762

Combination with Nut Brackets

Ball Screw Part Number	Recommended Nut Bracket			
	Type	Screw Shaft O.D.	Lead	Page
BSX BSS BSSE	06	01	-	-
			BNFB BNFM BNFR BNFA	801X 802S
	08	01	801X	P.780
			802S	P.780

Other than the part numbers shown above, Support Units with various configurations and surface treatments are also available. (P.761 - P.778)

A variety of materials and surface treatments for Nut Brackets are available. (P.780)