

Strut Clamps

Equal Dia. / Unequal Dia. / Equal Dia. T, Perpendicular Split

■ Features: Post-assembly mounting onto Posts for Stands in structures.

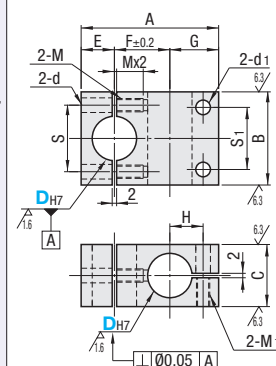
■ Equal Dia., Perpendicular Configuration, Split



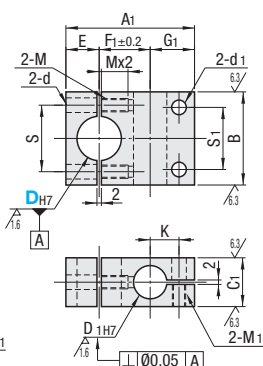
Type	Material	Surface Treatment	Accessory
KSBC	SS400	Black Oxide	Hex Socket Head Cap Screw
MSBC	SS400	Electroless Nickel Plating	Hex Socket Head Cap Screw (Stainless Steel)
ASBC	A6063	Black Anodize	Hex Socket Head Cap Screw
SSBC	SUS304	-	Hex Socket Head Cap Screw (Stainless Steel)

⊕ CB screws are included with the black oxide and black anodized products, and SCB screws are included with the other products.

Equal Dia., Perpendicular Configuration



Unequal Dia., Perpendicular Configuration



■ Unequal Dia., Perpendicular Configuration, Split

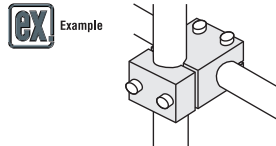


RoHS 10

Ordering Example Part Number
KSBC15 MSLC30

Alterations Part Number - (ALW)
ASBC15 - ALW

Alteration	Code	Spec.
Clear Anodize	ALW	Changes ASBC and ASLC from black anodize to clear anodize. ⊕ Applicable to ASBC and ASLC. ⊕ Stainless steel screws are included.

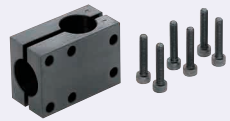


■ Included Screw

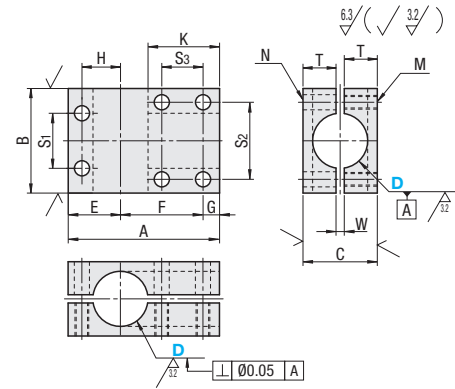
D	Included Screw
8	M4-15/M4-10, 2 pcs. each
10	M4-15/M5-15, 2 pcs. each
12	M4-18/M5-15, 2 pcs. each
15	M5-20/M5-20, 2 pcs. each
20	M6-25/M6-25, 2 pcs. each
25	M6-30/M6-25, 2 pcs. each
30	M8-35/M8-35, 2 pcs. each
35	M8-40/M8-40, 2 pcs. each

D	Unit Price								
	Equal Dia., Perpendicular Configuration	KSBC	MSBC	ASBC	SSBC	KSCL	MSLC	ASLC	SSLC
8	-	-	-	-	-	-	-	-	-
10	-	-	-	-	-	-	-	-	-
12	-	-	-	-	-	-	-	-	-
15	-	-	-	-	-	-	-	-	-
20	-	-	-	-	-	-	-	-	-
25	-	-	-	-	-	-	-	-	-
30	-	-	-	-	-	-	-	-	-
35	-	-	-	-	-	-	-	-	-

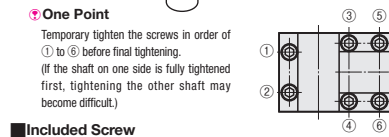
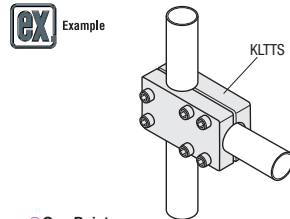
■ Equal Dia., Perpendicular Configuration, Split, T-Shaped



Type	Material	Surface Treatment	Accessory
KLTTs	SS400	Black Oxide	Hex Socket Head
MLTTs	SS400	Electroless Nickel Plating	Hex Socket Head
ALTTs	A6063	Black Anodize	Cap Screw
SLTTs	SUS304	-	-



Ordering Example Part Number
KLTTs15



D	Unit Price	
	KLTTs	MLTTs
10	CB5-16, 4 pcs.	SCB5-16, 4 pcs.
12	CB5-18, 4 pcs.	SCB5-18, 4 pcs.
15	CB5-20, 6 pcs.	SCB5-20, 6 pcs.
20	CB5-25, 6 pcs.	SCB5-25, 6 pcs.
25	CB5-30, 6 pcs.	SCB5-30, 6 pcs.
30	CB5-35, 6 pcs.	SCB5-35, 6 pcs.

Part Number	Type	D	Unit Price														
			A	B	C	E	F	G	H	K	M	S	T	W			
KLTTs	10	35	25	17	14	13	8	9	16	15	16.5	-	8	1	-	-	-
MLTTs	12	40	32	22	16	28	9	10	19	16	20	-	9	2	-	-	-
ALTTs	15	50	41	27	19	30	11	14	26	18	22	15	10	2	-	-	-
SLTTs	20	55	38	27	19	30	17	30.5	17	30.5	22	34	18	16	3	-	-
	30	75	50	41	25	44	20	35	20	35	26	40	20	19	-	-	-

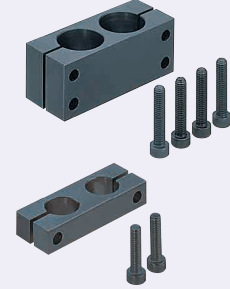
⊕ The perpendicularity is the tolerance before slitting. ⊕ For the available sizes, refer to the price list. ⊕ For mating, g6, f8 shaft tolerances are recommended. Tightening with a long wrench is recommended.

Strut Clamps

Equal/Unequal Dia., Parallel Holes, Pitch Selectable

■ Features: Two Posts for Stands fixable in parallel.

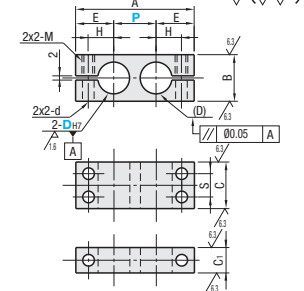
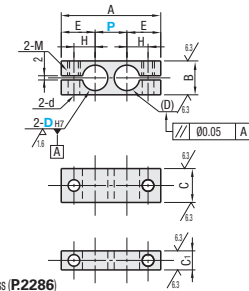
■ Equal Dia., Parallel Holes, Pitch Selectable



Type	Material	Surface Treatment	Accessory
KKP	SS400	Black Oxide	Hex Socket Head Cap Screw
MKP	SS400	Electroless Nickel Plating	Hex Socket Head Cap Screw (Stainless Steel)
AKP	A6063	Black Anodize	Hex Socket Head Cap Screw
SKP	SUS304	-	Hex Socket Head Cap Screw (Stainless Steel)

D=8-12

D=15-35



Standard

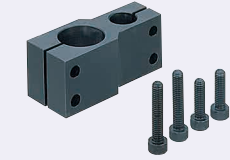
Thin

⊕ P Dimension Tolerance: JIS B 0405 Medium Class (P2286)

Part Number	Type	D _{H7}	P Selection								A	B	C	C ₁	E	H	S	M	d		
			10	15	20	25	30	40	50	75										100	150
Standard KKP MKP AKP SKP	Thin KKPT	8	+0.015	10	15	20	25	-	-	-	-	12	12	-	14	8	-	-	-	-	
		10	0	15	20	25	30	-	-	-	-	16	16	9	16	10	-	-	M5	5.5	
		12	+0.018	20	25	30	40	-	-	-	-	22	22	12	18	12	11	-	-	-	
		20	0	25	30	40	50	-	-	-	-	28	28	16	22	15	14	-	-	M6	6.6
		25	+0.021	30	40	50	75	-	-	-	-	32	32	19	25	18	16	-	-	-	
		30	0	40	40	40	50	75	-	-	-	40	40	22	29	21	20	-	-	M8	9
35	+0.025	50	75	100	150	-	-	-	-	45	45	22	32	24	24	-	-	-			

⊕ For the available sizes, refer to the price list. ⊕ The tolerance and parallelism of D_{H7} are the tolerances before slitting. ⊕ For mating, g6, f8 shaft tolerances are recommended. Tightening with a long wrench is recommended.

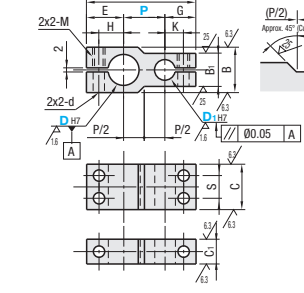
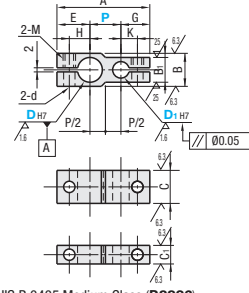
■ Unequal Dia., Parallel Holes, Pitch Selectable



Type	Material	Surface Treatment	Accessory
KKQ	SS400	Black Oxide	Hex Socket Head Cap Screw
KKQT	SS400	Electroless Nickel Plating	Hex Socket Head Cap Screw (Stainless Steel)

D=10, 12

D=15-35



Standard

Thin

⊕ P Dimension Tolerance: JIS B 0405 Medium Class (P2286)

Part Number	Type	D _{H7}	P Selection								A	B	B ₁	C	C ₁	E	G	H	K	S	M	d		
			10	15	20	25	30	40	50	75													100	150
Standard KKQ	Thin KKQT	8	+0.015	10	15	20	25	-	-	-	-	16	12	16	9	15	14	9	8	-	-	-	-	
		10	0	15	20	25	30	-	-	-	-	16	14	16	9	16	15	10	9	-	-	M5	5.5	
		12	+0.018	20	25	30	40	-	-	-	-	22	16	22	12	18	15	12	9	11	-	-	-	
		20	0	25	30	40	50	-	-	-	-	28	22	28	16	22	19	15	12	14	-	-	M6	6.6
		25	+0.021	30	40	50	75	-	-	-	-	32	22	32	19	25	19	18	12	16	-	-	-	
		30	0	40	28	40	19	29	23	21	15	20	40	28	40	19	29	23	21	15	20	-	-	M8
35	+0.025	50	75	100	150	-	-	-	-	45	32	45	22	32	25	24	18	24	-	-	-			

⊕ The tolerance and parallelism of D_{H7} and D_{1H7} are the tolerances before slitting. ⊕ For the available sizes, refer to the price list. ⊕ For mating, g6, f8 shaft tolerances are recommended. Tightening with a long wrench is recommended.

Ordering Example Part Number - D₁ - P
KKP10 - 15 - 20
KKQT20 - 15 - 30

D	Unit Price							
	Equal Dia., Parallel		Unequal Dia., Parallel					
	Standard	Thin	Standard	Thin				
8	KKP	MKP	AKP	SKP	KKPT	KKQT	-	-
10	-	-	-	-	-	-	-	-
12	-	-	-	-	-	-	-	-
15	-	-	-	-	-	-	-	-
20	-	-	-	-	-	-	-	-
25	-	-	-	-	-	-	-	-
30	-	-	-	-	-	-	-	-
35	-	-	-	-	-	-	-	-

D	Included Screw	
	Equal Dia., Parallel	Unequal Dia., Parallel
8	M5-12, 2 pcs.	-
10	M5-15, 2 pcs.	M5-12/M5-10, 1 pc. each
12	M5-15, 2 pcs.	M5-15, 2 pcs.
15	M5-20, 4 pcs.	M5-20/M5-15, 2 pcs. each
20	M6-25, 4 pcs.	M6-25/M6-20, 2 pcs. each
25	M6-30, 4 pcs.	M6-30/M6-20, 2 pcs. each
30	M8-35, 4 pcs.	M8-35/M8-30, 2 pcs. each
35	M8-40, 4 pcs.	M8-40/M8-35, 2 pcs. each