

Manual Units

Rapid Feed

■Features: Built-in speed multiplier enables feed rate of 2.5 times of the standard units.

■X-Axis

KUEHS

Handwheel Type A Handwheel Type B

Plastic Handle Plastic Handle

Handwheel Type C

Left Mounted Damper 60 4-M6, Depth 10 Damper

Five Spoked Handwheel Knob Fixing Plate Bracket Bearing Housing Linear Guide Nut Bracket 2-Ø5H7 Lead Screw Deep Groove Ball Bearing Side Plate Lead Screw Nut

Stainless Steel Cover (Top & Bottom Surfaces) Rotation Stopper Set Effective Stroke St/2 (Note 1: Stroke Limit St/2+5) 100 20 Effective Stroke St/2 (Note 1: Stroke Limit St/2+5) 10 10 51 67.5

4-M6, Depth 18 4-M6, Depth 18

Base Cross Section Enlarged View of Nut Slot

* The drawing shows right side mount.
Note 1) Stroke limit is where stroke reaches the mechanical limit.

Use M6 nuts.

Components

Parts	Base	Table	Lead Screw	Lead Screw Nut
Material	Aluminum Alloy	Aluminum Alloy	S45C	Brass
Surface Treatment	Clear Anodize	Clear Anodize	Black Oxide	-

Parts	Nut Bracket	Side Plate	Spur Gear	Cover
Material	Aluminum Alloy	Aluminum Alloy	S45C	SUS304HL
Surface Treatment	Clear Anodize	Clear Anodize	-	-

Part Number	Type	No.	Handwheel Type	Base Length L (mm)	Effective Stroke St(mm)	Lead Screw		Allowable Load (N)			Allowable Moment (N·m)			Mass (kg)			
						Thread Dia.	Lead	Horizontal	Vertical	Ma	Mb	Mc	S	Q (Number of Holes)	A	B	C
KUEHS	20	A	Plastic Handle	320	203	20	4	490	98	14	14	27	150	6	6.2	6.2	6.2
				370	253												
				420	303												
				470	353												

⚠The allowable load for this product is the load that can be placed on the stage table such that it can still be moved. "Horizontal" and "vertical" indicate the installation orientation.

Ordering Example: Part Number - Handwheel Type - Handwheel Position - L
KUEHS20 - A - L - 320

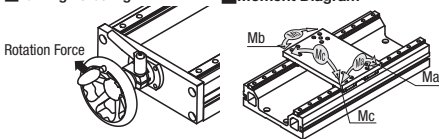
Part Number	Type	No.	Knob Type	Unit Price 1 ~ 2 pc(s).			
				L=320	L=370	L=420	L=470
KUEHS	20	A					
			B				
			C				

Required Torque, Required Turning Force

Part Number	Type	No.	Required Torque (N·m)		Required Turning Force (N)	
			Horizontal	Vertical	Horizontal	Vertical
KUEHS	20		0.147	1.051	5.653	40.41

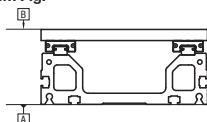
*Torque and turning force required at max. load capacity.
*Turning force is the force that rotates the handwheel.
*Vertical values are those when elevating the table.

Turning Force Fig.



Moment Diagram

Parallelim Fig.



Accuracy

Type	Parallelim (mm)	Backlash (mm)
KUEHS	0.15	0.3

*Parallelim is the degree of running parallelism for dimension B against dimension A. (See the diagram below.)
*The backlash value shown is for a lead screw model, and is a reference value.

Manual Units

With Position Indicator

■Features: Position Indicator allows easy position adjustments.

■X-Axis

KUDP

Handwheel Type A Handwheel Type B

Plastic Handle Plastic Handle

Handwheel Type C

Five Spoked Handwheel

Side Plate Lead Screw Nut Nut Bracket 2-Ø5H7 Lead Screw 4-M6, Depth 10 Linear Guide Lead Screw

Clamp Plate Position Indicator 2-M4 Depth 8 (Back side also) Effective Stroke St (Note 1: Stroke Limit St+5) 100 20 10 52 67.5

4-M6, Depth 18

Base Cross Section Enlarged View of Nut Slot

* The drawing shows right side mount.
Note 1) Stroke limit is where stroke reaches the mechanical limit.

Use M6 nuts.

Components

Parts	Base	Table	Lead Screw
Material	Aluminum Alloy	Aluminum Alloy	S45C
Surface Treatment	Clear Anodize	Clear Anodize	Black Oxide

Parts	Lead Screw Nut	Nut Bracket	Side Plate
Material	Brass	Aluminum Alloy	Aluminum Alloy
Surface Treatment	-	Clear Anodize	Clear Anodize

Part Number	Type	No.	Handwheel Type	Base Length L (mm)	Effective Stroke St(mm)	Lead Screw		Allowable Load (N)			Allowable Moment (N·m)			Mass (kg)			
						Thread Dia.	Lead	Horizontal	Vertical	Ma	Mb	Mc	S	Q (Number of Holes)	A	B	C
KUDP	20	A	Plastic Handle	170	53	20	4	490	98	14	14	27	150	4	3.8	3.8	4.1
				220	103												
				320	203												
				370	253												
				420	303												
				470	353												

⚠The allowable load for this product is the load that can be placed on the stage table such that it can still be moved. "Horizontal" and "vertical" indicate the installation orientation.

Ordering Example: Part Number - Handwheel Type - L
KUDP20 - A - 320

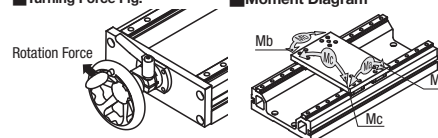
Part Number	Type	No.	Handwheel Type	Unit Price 1 ~ 2 pc(s).			
				L=170	L=220	L=320	L=370
KUDP	20	A					
			B				
			C				

Required Torque, Required Turning Force

Part Number	Type	No.	Required Torque (N·m)		Required Turning Force (N)	
			Horizontal	Vertical	Horizontal	Vertical
KUDP	20		0.059	0.333	2.261	12.823

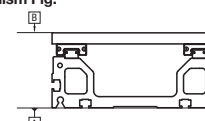
*Torque and turning force required at max. load capacity.
*Turning force is the force that rotates the handwheel.
*Vertical values are those when elevating the table.

Turning Force Fig.



Moment Diagram

Parallelim Fig.



Accuracy

Type	Parallelim (mm)	Backlash (mm)
KUDP	0.15	0.3

*Parallelim is the degree of running parallelism for dimension B against dimension A. (See the diagram below.)
*Backlash is not a guaranteed value but reference value.