

Points on Similar Product Comparison | Travel Accuracy (Straightness) 50µm

Similar Product Pages P.1954

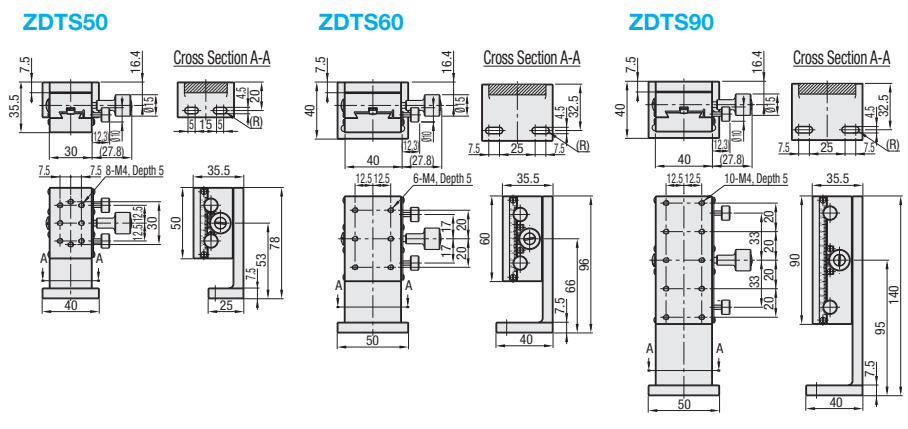
Features: Rapid feed Rack & Pinion stages with less accuracy and more economical prices than existing products.

Z Axis, Rectangular



X-Axis P.1903
XY-Axis P.1938
RoHS 10

M Material: Aluminum Alloy
S Surface Treatment: Black Anodize



Z-Axis Stages High Precision Stage Existing Product: ZWG (P.1954)

Part Number	Type	A	Stage Surface (mm)	Travel Distance (mm)	Travel per Rotation (mm)	Load Capacity (N)	Travel Accuracy Straightness (µm)	Weight (kg)	Unit Price		
ZDTS	50		30x50	±16	16.7	14.7	50µm	0.26			
	60		40x60	±21						19.6	0.38
	90		40x90	±35							

Resolution (Vernier Scale Indication): 0.1 mm/division
Knob Cover HDCVR15 (Sold Separately): Ø15 knobs can be increased in diameter by installing the cover. P.2004

Ordering Example Part Number ZDTS90

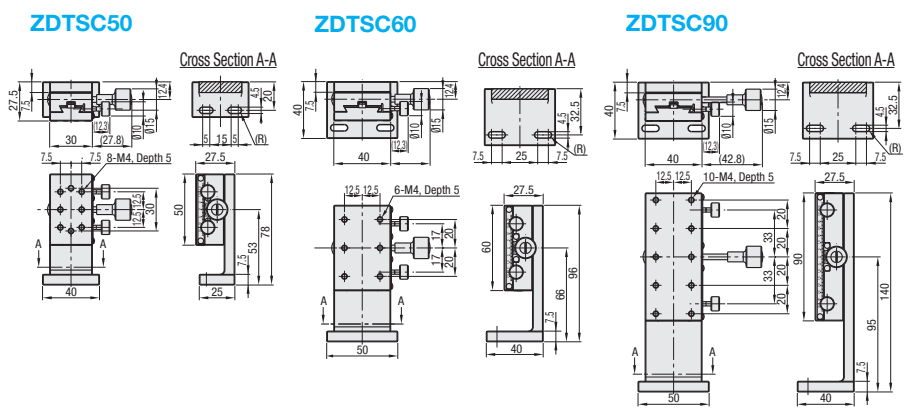
Features: Rapid Feed Rack & Pinion Stages with Low Profile. Stage thickness except the bottom plate is 20mm.

Z-Axis Low Profile



X-Axis P.1903
XY-Axis P.1938
RoHS 10

M Material: Aluminum Alloy
S Surface Treatment: Black Anodize



Z-Axis Stages Standard Type: ZDTS (P.1953)

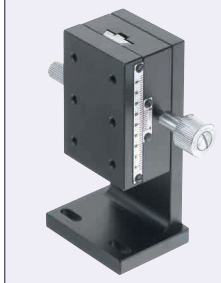
Part Number	Type	A	Stage Surface (mm)	Travel Distance (mm)	Travel per Rotation (mm)	Load Capacity (N)	Travel Accuracy Straightness (µm)	Weight (kg)	Unit Price		
ZDTS	50		50x30	±15	16.7	9.8	50µm	0.23			
	60		60x40	±20						14.7	0.33
	90		90x40	±35							

Resolution (Vernier Scale Indication): 0.1 mm/division
Knob Cover HDCVR15 (Sold Separately): Dovetail Stage Ø15 knobs can be increased in diameter by installing the cover. P.2004

Ordering Example Part Number ZDTS60

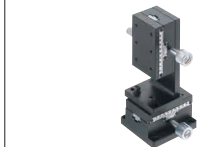
Features: Rectangular Dovetail Slide Z-Axis Stages with 18mm travel per knob rotation. Narrower widths compared to ZFG (P.1957) are provided.

Z Axis, Rectangular



X-Axis P.1904
XY-Axis P.1939
RoHS 10

Example



XWG60 (P.1904) and ZWG60 Combination



XYWG60 (P.1939) and ZWG90 Combination



XYWG60 (P.1939) and ZWG90 Combination

Standard Stages Similar Products: ZDTS (P.1953)

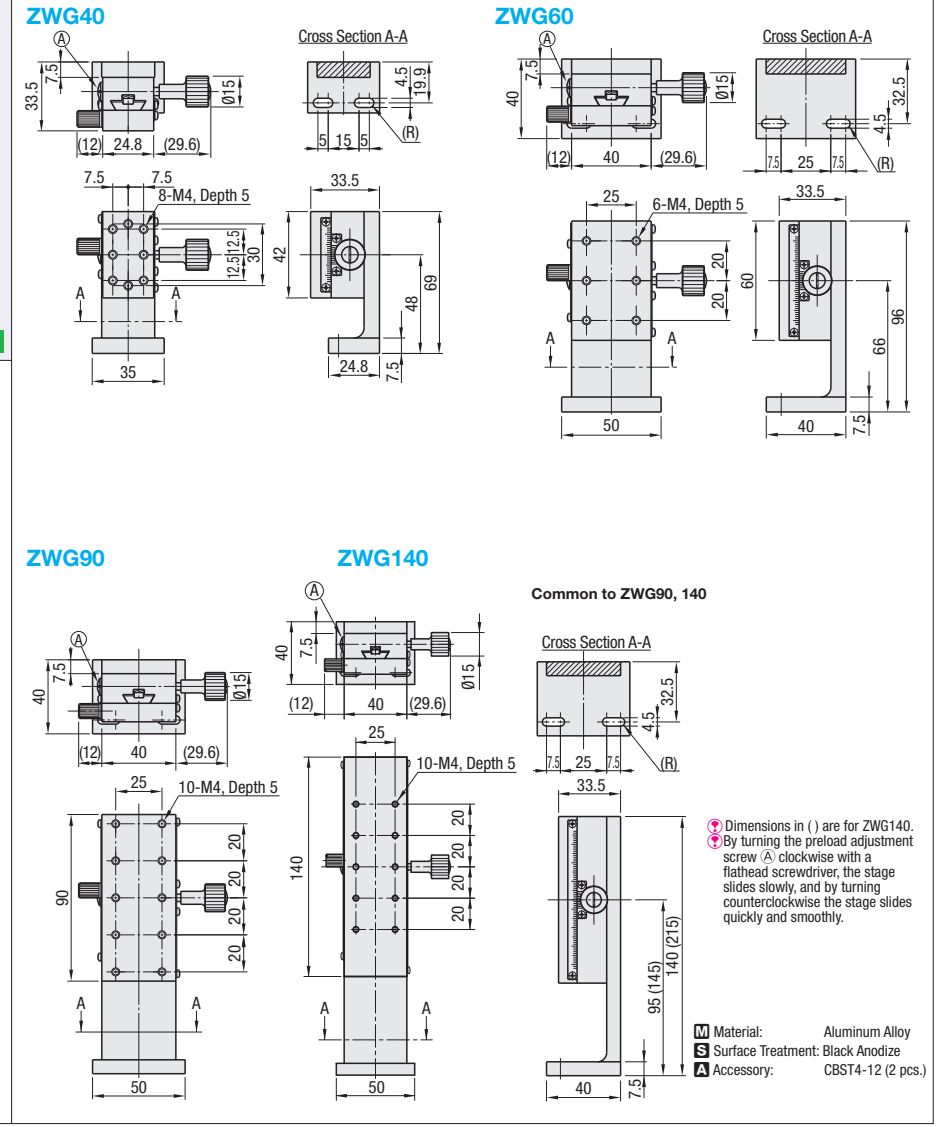
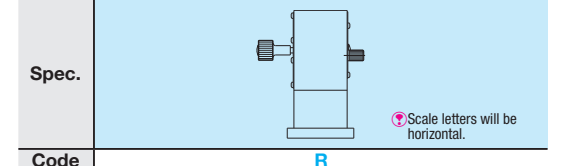
Part Number	Type	No.	Stage Surface (mm)	Travel Distance (mm)	Travel per Rotation (mm)	Travel Accuracy (µm)		Load Capacity (N)	Weight (kg)	Unit Price		
						Straightness						
ZWG	40		24.8x42	±12	18	20		14.7	0.17			
	60		40x60	±21								
	90		40x90	±35		30					19.6	0.45
	140		40x140	±60								

Resolution (Vernier Scale Indication): 0.1 mm/division
Knob Cover HDCVR15 (Sold Separately): Dovetail Stage Ø15 knobs can be increased in diameter by installing the cover. P.2004

Ordering Example Part Number ZWG60

Alterations Part Number ZWG60 - (R) ZWG60 - R

Alteration Feed Knob Position Change (Left/Right Reversed)



Dimensions in () are for ZWG140.
By turning the preload adjustment screw (A) clockwise with a flathead screwdriver, the stage slides slowly, and by turning counterclockwise the stage slides quickly and smoothly.

M Material: Aluminum Alloy
S Surface Treatment: Black Anodize
A Accessory: CBST4-12 (2 pcs.)