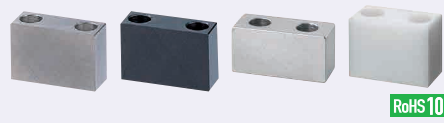


Stopper Blocks

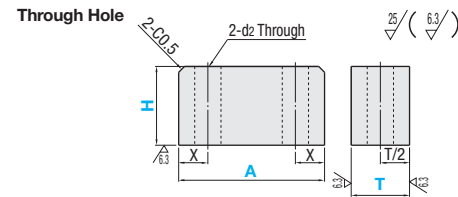
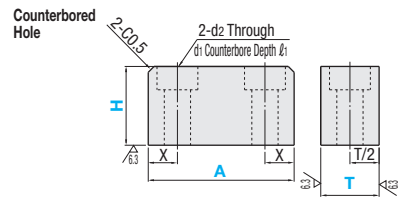
■ Features: Hole types are selectable.

■ Straight Type



RoHS10

Type		Material	Hardness	Surface Treatment
Counterbored Hole	Through Hole			
SBHB	SBKHB	S45C Equivalent (SBHB) S45C (SBKHB)	-	Black Oxide
SBHM	SBKHM	S45C Equivalent (SBHM) S45C (SBKHM)	-	Electroless Nickel Plating
SBHNB	-	S45C Equivalent	40HRC~	Black Oxide
SBHHM	SBKHMM	S45C Equivalent (SBHHM) S45C (SBKHMM)	-	Electroless Nickel Plating
SBHU	-	Urethane	-	-
SBHJ	-	Polyacetal	-	-



Part Number	A Selection	H 5mm Increment	T		X	d1	d2	l1	T	Unit Price						
			Counterbored Hole	Through Hole						SBHB SBKHB	SBHM SBKHM	SBHNB SBKHMM	SBHU SBHJ			
(Counterbored Hole) (Through Hole)	20 30 40 50	(5) 10~40	10	10	5	8	4.5	4.5	10, A10							
SBHB SBKHB	30 40 50 60	(10) 15~50	15	A10	7	9.5	5.5	5.5	15, A15							
SBHM SBKHM	30 40 50 60 70 80	(15) 20~50	20	15	8	11	6.5	6.5	20							
SBHHM SBKHMM	40 50 60 70 80 90 100	(20) 30~50	30	A15	10	14	9	9	30							

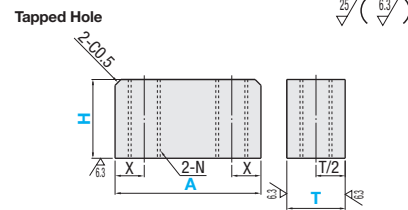
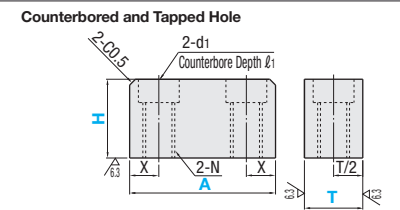
⊕A≥H ⊕H dimension in () is for Through Hole Type only.

■ Tapped Hole Type



RoHS10

Type		Material	Hardness	Surface Treatment
Counterbored and Tapped Hole	Tapped Hole			
SBNB	SBKNB	-	-	Black Oxide
SBNM	SBKNM	S45C	-	Electroless Nickel Plating
SBNHB	-	40HRC~	-	Black Oxide
SBNHM	SBKNHM	-	-	Electroless Nickel Plating



Part Number	A Selection	H 5mm Increment	T		X	d1	l1	N	T	Unit Price			
			Counterbored and Tapped Hole	Tapped Hole						SBNB SBKNB	SBNM SBKNM	SBNHB SBKNHM	
(Counterbored and Tapped Hole) (Tapped Hole)	20 30 40 50	(5) 10~40	10	10	5	8	4.5	M5	10, A10				
SBNB SBKNB	30 40 50 60	(10) 15~50	15	A10	7	9.5	5.5	M6	15, A15				
SBNM SBKNM	30 40 50 60 70 80	(15) 20~50	20	15	8	11	6.5	M8	20				
SBNHB SBKNHM	40 50 60 70 80 90 100	(20) 30~50	30	A15	10	14	9	M10	30				

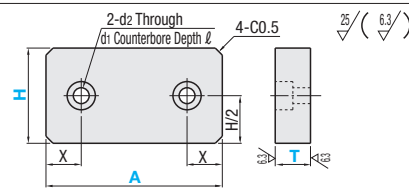
⊕A≥H ⊕H dimensions in () are for Tapped Hole Type only.

■ Plate Type



RoHS10

Type	Material	Hardness	Surface Treatment
SBFB	-	-	Black Oxide
SBFM	S45C Equivalent	-	Electroless Nickel Plating
SBFHB	-	40HRC~	Black Oxide
SBFHM	-	40HRC~	Electroless Nickel Plating



Part Number	A Selection	H 5mm Increment	T	X	d1	d2	l	Unit Price			
								SBFB	SBFM	SBFHB	SBFHM
SBFB	20 30 40 50	10~30	5	5	-	5.5	-				
SBFM	20 30 40 50 60	10~40	8	5	8	4.5	4.5				
SBFHB	30 40 50 60 70 80	15~50	10	7	9.5	5.5	5.5				
SBFHM	30 40 50 60 70 80 90 100	20~50	15	8	11	6.5	6.5				

⊕The bolt mounting hole is a through hole when T=5. ⊕A≥H

Ordering Example

Part Number	A	H	T
SBKHB	40	10	A10
SBNB	20	10	10
SBFB	30	15	5

Stopper Blocks with Urethane

■ Features: Best suited for easily scratched workpieces.

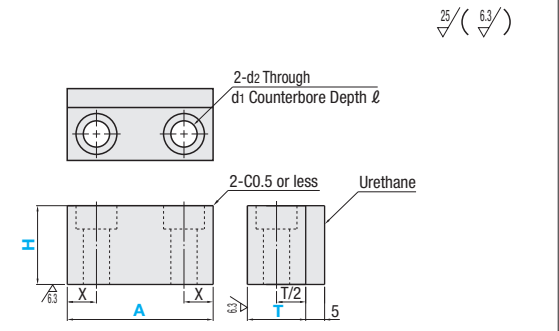
■ Stopper Blocks with Urethane



RoHS10

Type	Urethane	Material	Surface Treatment
SBUB	Shore A90 (Natural Color)	S45C	Black Oxide
SBUM	-	-	Electroless Nickel Plating

⊕Urethane is baked.
⊕Surface treatment of verge part between core block and urethane may be peeled off about 2 ~ 3mm from edge.



Part Number	Type	A Selection			H Selection			T	X	d1	d2	l	Unit Price		
		30	40	50	20	25	30						40	50	SBUB
SBUB SBUM		30	40	50	20	25	30	40	50	15	7	9.5	5.5	5.5	
		30	40	50		25	30	40	50	20	8	11	6.5	6.5	
		40	50	60			30	40	50	30	10	14	9	9	

⊕A≥H

Ordering Example

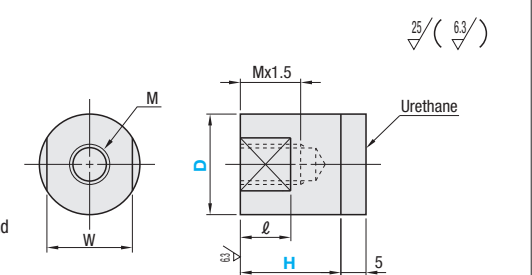
Part Number	A	H	T
SBUB	40	20	15

■ Stopper Blocks with Urethane - Cylinder Type



Type	Urethane	Material	Surface Treatment
SBEB	Shore A90 (Black)	S45C	Black Oxide
SBEM	-	-	Electroless Nickel Plating

⊕Urethane is baked.
⊕Surface treatment of verge part between core block and urethane may be peeled off about 2 ~ 3mm from edge.



Part Number	Type	D	H Selection					M (Coarse)	W	l	Unit Price	
			20	25	30	35	40				SBEB	SBEM
SBEB SBEM		10	20	25	30	35	40	6	8	8		
		20		25	30	35	40	10	17	10		
		30			30	35	40	12	27	15		

Ordering Example

Part Number	D	H
SBEM	20	35