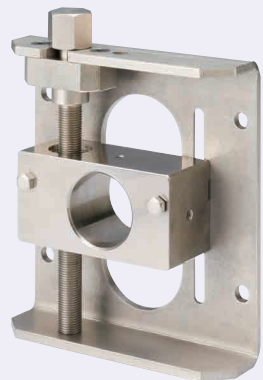


Belt Tensioners - Screw Type

■ **Features:** It is the tensioner for roller and idler. It can be easily installed and adjusted by spanner or wrench.



RoHS10

Components	Bearing Block	Spacer Block	Chassis	Adjusting Bolt	Stopper Bolt
M Material	SS400	SS400	SPH	S45C	SUS304 Equivalent
S Surface Treatment	Electroless Nickel Plating				
Components	T-Nut	Dowel Pin	Hex Socket Flat Head Cap Screw	Metal Washer	Hexagon Socket Set Screw
M Material	SS400	SUJ2	SUS304 Equivalent	S45C	SUS304 Equivalent
S Surface Treatment	Trivalent Bright Chromate Plating	-	-	Electroless Nickel Plating	-

•RONAJ10, 12, 15

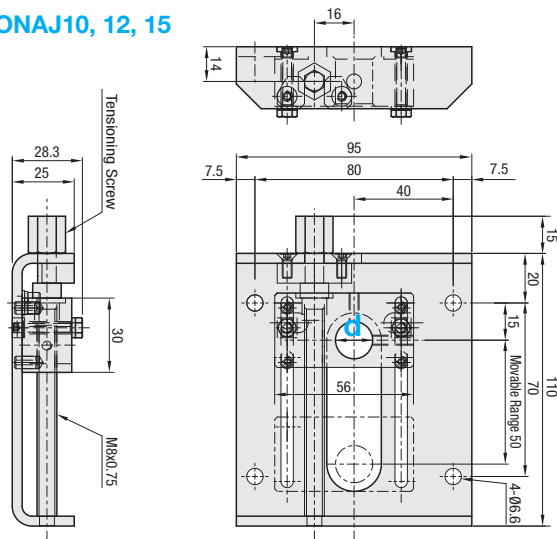
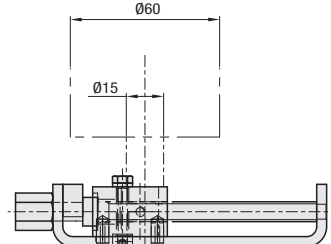


Diagram of mounting state of Ø60 Roller



Recommended Rollers

▶ P.1-1142 RORSPA60-15

Part Number	Unit Price
TYPE	d
RONAJ	10
	12
	15

For orders larger than indicated quantity, please check with WOS.

•RONAJ20, 25, 30

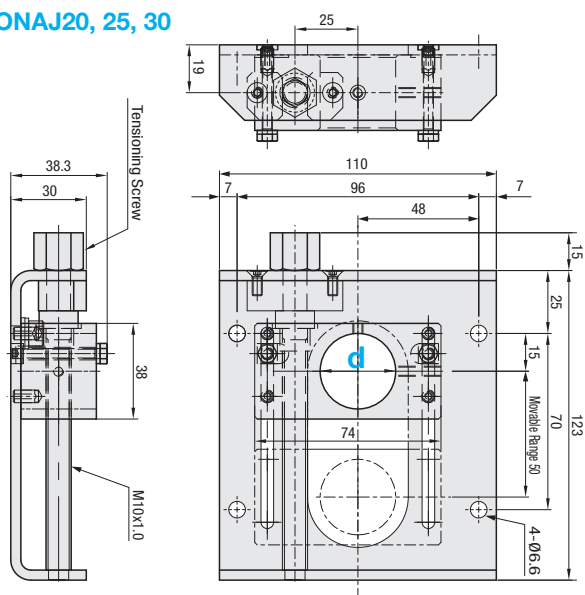
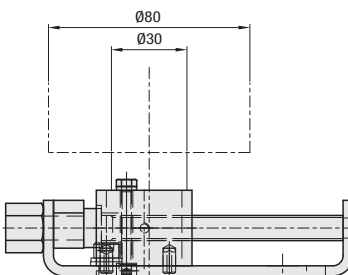


Diagram of mounting state of Ø80 Roller



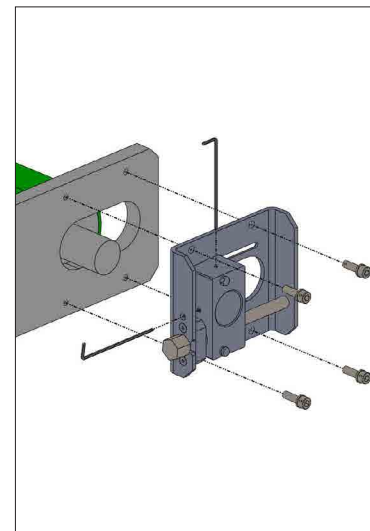
Recommended Rollers

▶ P.1-1142 ROSPA80-30

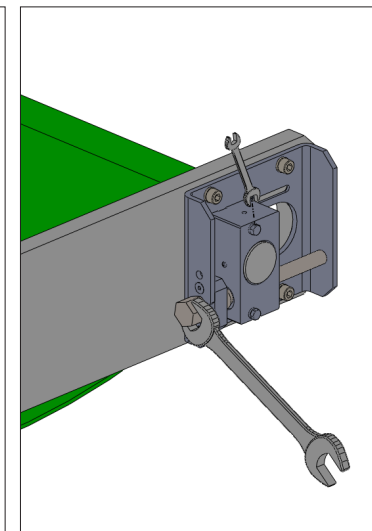
Part Number	Unit Price
TYPE	d
RONAJ	20
	25
	30

For orders larger than indicated quantity, please check with WOS.

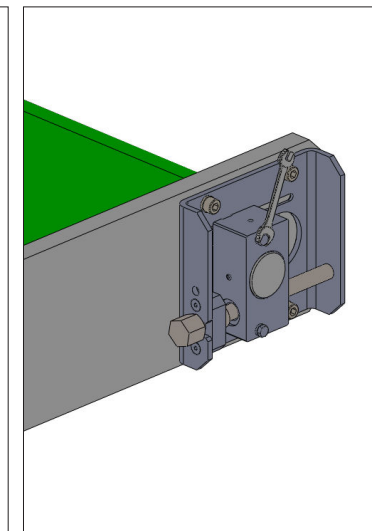
How to Mount



1. Mount the main body on the chassis. Mount the Roller (Idler).



2. Loosen the fixing nut, and adjust the tensioner with Hex Head Stud.

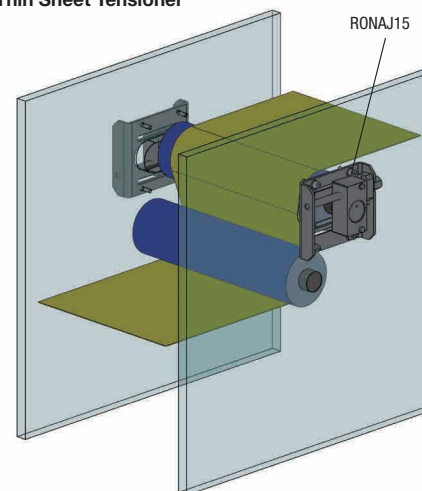


3. Tighten the fixing nut at the desired position and thereby fix the position.

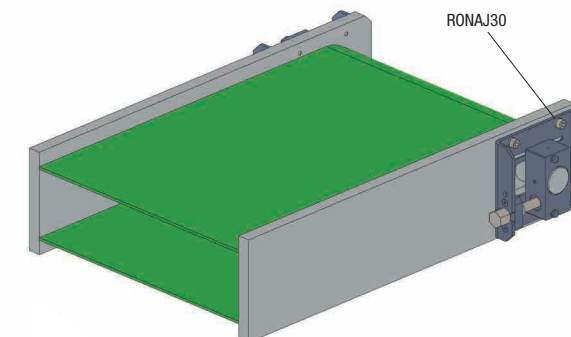


Example

• Thin Sheet Tensioner



• Flat Belt Tensioner



Ordering Example
Part Number
RONAJ 30