

Rollers

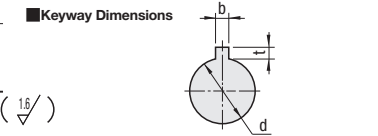
Straight with Keyway

Features: 5th business day shipping is available for shaft bore with keyway machining and Urethane Lined.

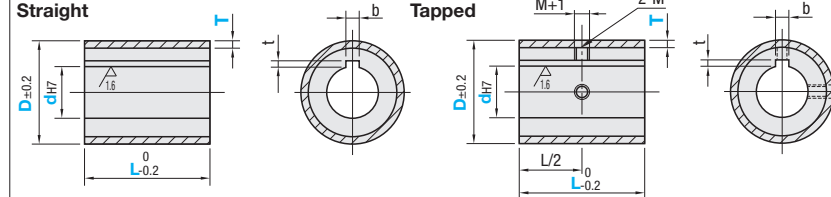


L Selectable		Urethane Thickness Selectable		Material		Hardness
Straight	Tapped	Straight	Tapped	Core	Lining	
ROUSK	ROUSKN	ROEUSK	ROEUSKN	SUS304	Urethane (Natural Color)	Shore A90
ROUAK	ROUAKN	ROEUAK	ROEUAKN	Aluminum Alloy	Urethane (Natural Color)	Shore A70
ROGSK	ROGSKN	ROEGSK	ROEGSKN	SUS304	Urethane (Natural Color)	Shore A70
ROGAK	ROGAKN	ROEGAK	ROEGAKN	Aluminum Alloy	Urethane (Natural Color)	Shore A70
ROHSK	ROHSKN	ROEHSK	-	SUS304	Urethane (Natural Color)	Shore A50
ROHAK	ROHAKN	ROEHAK	ROEHAKN	Aluminum Alloy	Urethane (Natural Color)	Shore A50

When $L \leq dx3$, hole d is machined from the same direction.
 When $L > dx3$, hole d is machined from both ends as shown below. There may be no relief in some cases.



Shaft Hole Dia. d	Reference Dim.	Tolerance (JS9)	Reference Dim. t	Tolerance (JS9)
8	3	± 0.0125	1.4	$+0.1$
10	4	± 0.0150	1.8	0
12	5	± 0.0150	2.3	0
15	6	± 0.0180	2.8	0
20	8	± 0.0180	3.3	$+0.2$
25				0
30				0



Part Number		D	dh7 Selection	L Selection										T	M	
Type	Type			15	20	25	30	40	50	60	70	80	90			100
Straight	Tapped	20	8	15	20	25	30	40	50	60	70	80	90	100	3	3
ROUSK	ROUSKN	25	8 10 12	15	20	25	30	40	50	60	70	80	90	100	3	3
ROUAK	ROUAKN	30	8 10 12 15	15	20	25	30	40	50	60	70	80	90	100		
ROGSK	ROGSKN	35	10 12 15 20	20	25	30	40	50	60	70	80	90	100			
ROGAK	ROGAKN	40	10 12 15 20	20	25	30	40	50	60	70	80	90	100			
ROHSK	ROHSKN	50	12 15 20 25	25	30	40	50	60	70	80	90	100	4	4		
ROHAK	ROHAKN															

Part Number		D	dh7 Selection	L Selection			T	M
Type	Type			10mm Increment				
Straight	Tapped	50	10 12 15	30~100			5	5
ROEUSK	ROEUSKN	60	12 15 20				10	6
ROEUAK	ROEUAKN	80	15 20 25					
ROEGSK	ROEGSKN	100	20 25 30					
ROEGAK	ROEGAKN							
ROEHSK	ROEHSKN							
ROEHAK	ROEHAKN							

Ordering Example: Part Number - d - L - T
 ROUSK20 - 8 - 30
 ROGSKN30 - 12 - 40
 ROEUSK80 - 20 - 50 - T5

Alterations Example: Part Number - d - L - T - (UDC, LC)
 ROUSK20 - 8 - 30 - UDC
 ROEUSK80 - 20 - 50 - T5
 ROUAK30 - 10 - 30 - LC29

Alterations	Code	Spec.
Change to Antistatic Urethane (Urethane Color: Gray)	UDC	Change Urethane Shore A90 to Antistatic Urethane Change to Urethane Ordering Code UDC Specific Volume Resistivity $2.1 \times 10^{10} \Omega \cdot \text{cm}$ Surface Resistivity $4.0 \times 10^9 \Omega$ (Temperature 30°C / Humidity 60%)
L Dimension	LC	Ordering Code LC11 LC=1mm Increment $10 \leq LC < L$ Only applicable to L Selectable Types.

D	L	Unit Price					
		Straight (ROUSK)	Tapped (ROUSKN)	Straight (ROUAK)	Tapped (ROUAKN)	Straight (ROGSK)	Tapped (ROGSKN)
20	15-25						
	30-50						
	60-100						
25	15-25						
	30-50						
	60-100						
30	15-25						
	30-50						
	60-100						
35	20-25						
	30-50						
	60-100						
40	20-25						
	30-50						
	60-100						
50	25						
	30-50						
	60-100						

D	L	Unit Price					
		Straight (ROEUSK)	Tapped (ROEUSKN)	Straight (ROEUAK)	Tapped (ROEUAKN)	Straight (ROEGSK)	Tapped (ROEGSKN)
50	30-50						
	60-100						
	60-100						
60	30-50						
	60-100						
	60-100						
80	30-50						
	60-100						
	60-100						
100	30-50						
	60-100						
	60-100						

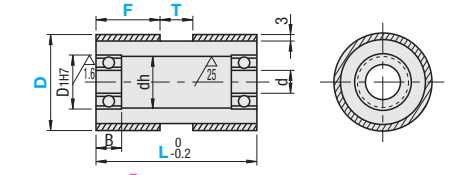
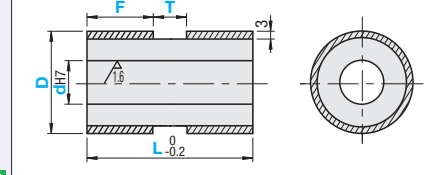
Urethane may discolor over time, but there is no effect on physical properties.

Groove Rollers



Type	Core	Lining	Bearing	Hardness
No Bearing / With Bearings	Aluminum Alloy	Urethane (Natural Color)	Steel	Shore A90
ROUAM	SUS304			
ROUSM				

Urethane is baked on the outer circumference of the core material.



Type	D	dh7 Selection	1mm Increment		
			L	F	T
ROUAM	25	8 10 12	15-50		
	30	8 10 12 15		0-46	(F+T≤L-2)
	35	10 12 15 20	20-50		
	40	10 12 15 20			
	50	12 15 20 25	25-100		
	60	12 15 20 25 30	30-100		0-96
	80	15 20 25 30	40-100		(F+T≤L-2)
	80				

Type	D	L	1mm Increment		d	Dh7	dh	B	Bearing Used
			F	T					
ROUAM	25	20-50	0-46	(F+T≤L-2)	6	15	10	5	696ZZx2
	30				8	19	15	6	698ZZx2
	35	10			22	18	6	690ZZx2	
	40	12			28	24	8	6001ZZx2	
	50	25-100			15	32	28	9	6002ZZx2
	50								

For bearing detailed dimensions, see P989.

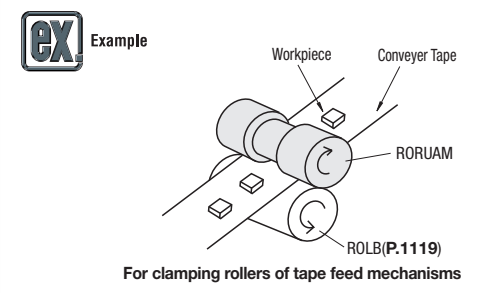
Ordering Example: Part Number - d - L - F - T
 ROUSM30 - 8 - L30 - F10 - T5
 RORUAM40 - L40 - F8 - T3

D	L	Unit Price		
		No Bearing (ROUAM)	With Bearings (ROUSM)	With Bearings (RORUAM)
25	15(20)-25			
	26-50			
30	15(20)-25			
	26-50			
35	20(25)-25			
	26-50			
40	20(25)-25			
	26-50			
50	25			
	26-50			
	51-100			
60	30-50			
	51-100			
	51-100			
80	40-50			
	51-100			
	51-100			

L dimensions in () are for Bearing Type.

Alterations Example: Part Number - d - L - F - T - (MC, DC, SB)
 ROUSM30 - 8 - L30 - F10 - T5 - MC
 RORUAM30 - L40 - F10 - T5 - SB

Alterations	Tapping	Groove Depth	Bearing Material								
Code	MC	DC	SB								
Spec.	<p>Adds 2 tapped holes at 90°.</p> <table border="1"> <tr> <th>D</th> <th>M</th> </tr> <tr> <td>25, 30</td> <td>3</td> </tr> <tr> <td>35, 40</td> <td>4</td> </tr> <tr> <td>50, 60, 80</td> <td>5</td> </tr> </table> <p>Ordering Code MC</p> <p>Applicable to "No Bearing" Type only.</p>	D	M	25, 30	3	35, 40	4	50, 60, 80	5	<p>Changes groove depth in 1mm increment.</p> <p>Ordering Code DC5</p>	<p>Changes the Bearing to Stainless Steel Bearing.</p> <p>Ordering Code SB</p> <p>Applicable to Bearing Type only.</p>
D	M										
25, 30	3										
35, 40	4										
50, 60, 80	5										



For clamping rollers of tape feed mechanisms