

Rollers - Tapped

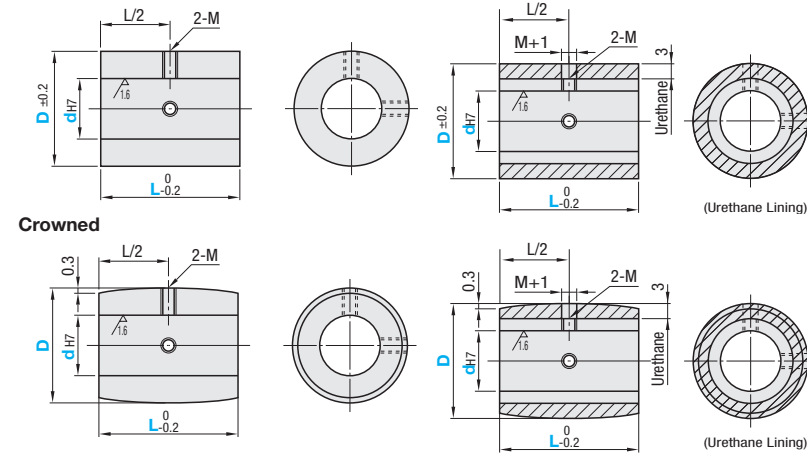
Straight, Crowned (L=15 ~ 100)



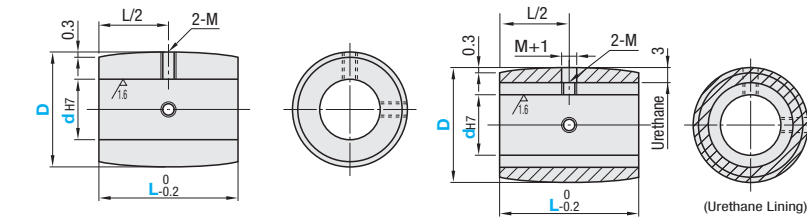
Type	Material Core	Surface Treatment (Lining)	Hardness
Straight			
ROLSN	SUS304	-	-
ROLAN	Aluminum Alloy	Clear Anodize	-
Crowned			
ROUSN	SUS304	-	Shore A90
ROUAN	Aluminum Alloy (ROUAN) A5052 (ROCUAN)	Urethane (Natural Color)	Shore A70
ROGSN	SUS304	-	Shore A70
ROGAN	Aluminum Alloy	-	Shore A50
ROHSN	SUS304	-	Shore A70
ROHAN	Aluminum Alloy	-	Shore A50

Urethane is baked on the outer circumference of the core material.

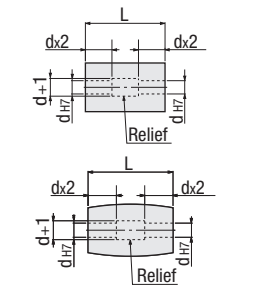
Straight



Crowned



- When $L \leq dx3$, hole d is machined from the same direction.
- When $L > dx3$, hole d is machined from both ends as shown below. There may be no relief in some cases.



Part Number Type	D	dH7 Selection	L Selection					M	
Straight	20	8	15	20	25	30	40	50	M3
Urethane Core Only	25	8 10 12	15	20	25	30	40	50	M3
ROLSN	30	8 10 12 15	15	20	25	30	40	50	M4
ROLAN	35	10 12 15 20	20	25	30	40	50	M4	
ROUSN	40	10 12 15 20	20	25	30	40	50	M4	
ROUAN	50	12 15 20 25	25	30	40	50	100	M5	
ROGSN	60	12 15 20 25 30	30	40	50	100	M5		
ROGAN	80	15 20 25 30	40	50	100	M5			

Urethane may discolor over time, but there is no effect on physical properties.

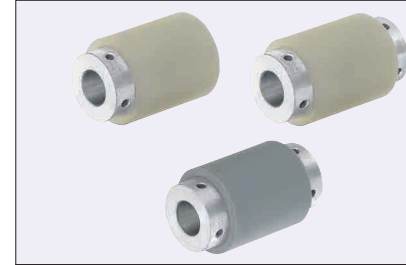
Ordering Example: Part Number - d - L
 ROLAN30 - 8 - 30
 ROUAN40 - 10 - 25

Alterations: Part Number - d - L - (UDC)
 ROUSN50 - 12 - 50 - UDC

D	L	Unit Price									
		Straight					Crowned				
		Core Only		Urethane			Core Only		Urethane		
		ROLSN	ROLAN	ROUSN	ROUAN	ROGSN	ROGAN	ROCSN	ROCAN	ROCUSN	ROCUAN
20	15-25										
	30-50										
25	15-25										
	30-50										
30	15-25										
	30-50										
35	20-25										
	30-50										
40	20-25										
	30-50										
50	25										
	30-50										
60	100										
	30-50										
80	100										
	40-50										
100	100										
	30-50										

Rollers

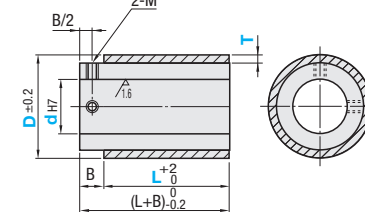
Straight with Set Screw Holes



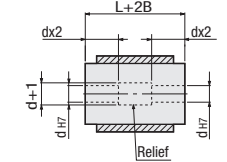
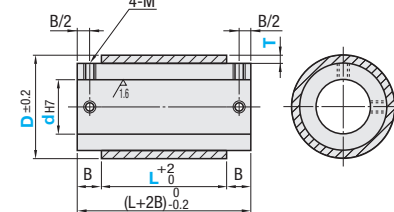
L Selectable	Urethane Thickness Selectable, L Configurable	Material	Hardness		
Set Screw Holes at Both Ends	Set Screw Hole at One End	Core	Lining		
RONUS	ROEKUS	ROENUS	SUS304	Urethane (Natural Color)	Shore A90
RONUA	ROEKUA	ROENUA	Aluminum Alloy		
RONGS	ROEKS	-	SUS304		
RONGA	ROEKA	ROENGA	Aluminum Alloy		
RONHA	ROEKHA	ROENHA	Aluminum Alloy	Silicon Rubber	Shore A70
RONSS	-	-	SUS304		
RONSA	-	-	A5052		
RONTS	-	-	SUS304	Heat Resistant Urethane (Red Brown)	Shore A90
				Operating Temperature: -110°C	

Urethane and Silicon Rubber are baked on the outer circumference of the core material.

Set Screw Holes at One End



Set Screw Holes at Both Ends



- When $L+2B \leq dx3$, hole d is machined from the same direction.
- When $L+2B > dx3$, hole d is machined from both ends as shown above. There may be no relief in some cases.

L Selectable (Set Screw Holes at Both Ends Type Only)

Part Number Type	D	dH7 Selection	L Selection					T	B	M	
RONUS	20	8	15	20	25	30	40	50	3	8	M3
RONUA	25	8 10 12	15	20	25	30	40	50			
RONGS	30	8 10 12 15	15	20	25	30	40	50	3	8	M4
RONGA	35	10 12 15	20	25	30	40	50				
RONHA	40	10 12 15	20	25	30	40	50	3	8	M5	
RONTS	50	12 15	25	30	40	50	100				

Ordering Example: Part Number - d - L - T
 RONSS20 - 8 - 30
 ROEKUA50 - 15 - 80 - T10

Urethane Thickness Selectable (Set Screw Holes at One End / Both Ends)

Part Number Type	D	dH7 Selection	L Selection	T Selection	B	M
Set Screw Hole at One End	40	10 12 15	30-50	5	10	M5
Set Screw Holes at Both Ends	50	10 12 15	30-100	5	10	M6
ROEKUS	60	12 15 20	30-100	5	10	M6
ROEKUA	80	15 20 25				
ROEKS	100	20 25 30				
ROEKHA						

L Selectable (Set Screw Holes at Both Ends Type Only)

D	L	Unit Price							
		Set Screw Holes at Both Ends							
		RONUS	RONUA	RONGS	RONGA	RONHA	RONSS	RONSA	RONTS
20	15, 20, 25								
	30, 40, 50								
25	15, 20, 25								
	30, 40, 50								
30	15, 20, 25								
	30, 40, 50								
35	20, 25								
	30, 40, 50								
40	20, 25								
	30, 40, 50								
50	25								
	30, 40, 50								
100	100								

Urethane Thickness Selectable (Set Screw Holes at One End / Both Ends)

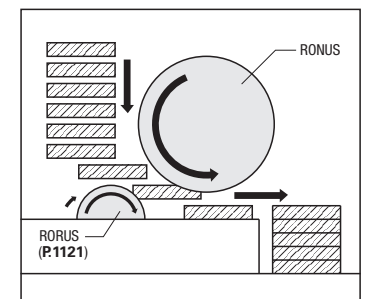
D	L	Unit Price							
		Set Screw Hole at One End				Set Screw Holes at Both Ends			
		ROEKUS	ROEKUA	ROEKS	ROEKHA	ROENUS	ROENUA	ROENGA	ROENHA
40	30-50								
	60-100								
50	30-50								
	60-100								
60	30-50								
	60-100								
80	30-50								
	60-100								
100	30-50								
	60-100								

Urethane may discolor over time, but there is no effect on physical properties.

Alterations: Part Number - d - L - T - (UDC)
 RONUS20 - 8 - 30 - UDC
 ROEKUS50 - 15 - 80 - T10 - UDC

Alteration	Code	Spec.
Change to Antistatic Urethane (Urethane Color: Gray)	UDC	Change Urethane Shore A90 to Antistatic Urethane Change to Urethane (Ordering Code) UDC Specific Volume Resistivity 2.1x10 ¹¹ Ω-cm Surface Resistivity 4.0x10 ¹¹ Ω (Temperature 30°C / Humidity 60%)

EX Example



As a Feeding Roller for a Card Collator