

Slit Couplings

Extra Super Duralumin - Clamping, Set Screw, Short For Servo Motors

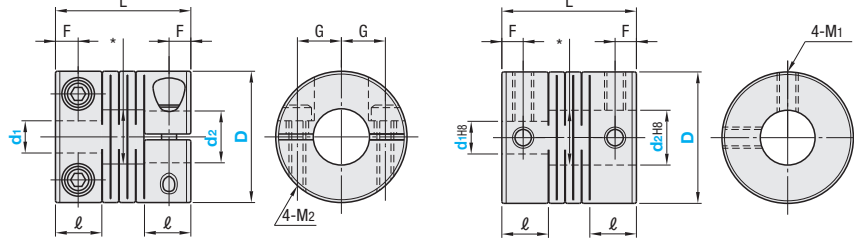
■ Features: Due to the use of extra super Duralumin, it has high torsional rigidity and is applicable with servo motors.

⚠ For more misalignment tolerances and higher torque capacities, see Disc Type P.1075.

■ For Servo Motors

CPCX (Clamping)

CPSX (Set Screw)



*d1, d2 Identical Diameter = d1+0.5
d1, d2 Different Diameters = Large Shaft Diameter + 0.5

⚠ The lateral, angular, and axial misalignment values shown are for each occurring individually. When multiple misalignments are occurring simultaneously, the allowable maximum value of each will be reduced to 1/2.

⚠ For the selection criteria and alignment procedures, see P.1061.

Type	M Material	S Surface Treatment	A Accessory
CPCX	Extra Super Duralumin	Clear Anodize	Hex Socket Head Cap Screw
CPSX	Extra Super Duralumin	Clear Anodize	Set Screw

Part Number Type	D	d1		d2		L	ℓ	F	M1	M2	G	Unit Price		
		5	6	5	6							CPCX	CPSX	
Clamping CPCX	16	5	6	5	6	17.4	6	3	M3	M2	4.74			
		6	6											
	19	5	6	7	8	20	6.8	3.4	M3	M2.5	5.6			
		6	6.35	7	8									
		6.35	6.35	8										
		8		8	*10									
		*10			*10									
	24	6	6	8	10	25	8.5	4.25	M4	M3	8			
		6.35	6.35	8	10									
		7		8										
		8		8	9.525							10		
		9.525		10										
10			10	*11	*12									
*11					*12									
*12				*12										
29	8		8	10	30	10.2	5.1	M4	M3	9				
	10		10	11							12	*14		
	11			12							*14			
	12			12							*14			
	10										14			
	11										14			
34	12		12	14	35	12	6	M5	M3	11				
	14			14							15	16		
	15										15	16		
	15										16			
	16										16			

⚠ CPCX is not available for * marked sizes.

Part Number Type	D	Allowable Torque (N·m)	Angular Misalignment (°)	Lateral Misalignment (mm)	Static Spring Constant (N·m/rad)	Max. Rotational Speed (r/min)	Moment of Inertia (kg·m ²)	Allowable Axial Misalignment (mm)	Screw Tightening Torque (N·m)	Compression Factor	Mass (g)
CPCX	16	0.5	0.5	0.05	200	39000	2.5x10 ⁻⁷	±0.1	0.5	1	7
	19	1			270	33000	5.8x10 ⁻⁷		1		12
	24	1.5			790	26000	1.8x10 ⁻⁶		1.5		23
	29	2			1400	21000	4.7x10 ⁻⁶		1.5		41
	34	3			2200	18000	1.1x10 ⁻⁵		1.5		62
CPSX	16	0.5	0.5	0.05	200	39000	2.8x10 ⁻⁷	±0.1	0.7	1	7
	19	1			270	33000	6.2x10 ⁻⁷		0.7		10
	24	1.5			790	26000	2.0x10 ⁻⁶		1.7		22
	29	2			1400	21000	5.2x10 ⁻⁶		1.7		40
	34	3			2200	18000	1.1x10 ⁻⁵		4		64

Ordering Example Part Number CPSX19 - Shaft Bore Dia. d1 5 - Shaft Bore Dia. d2 6

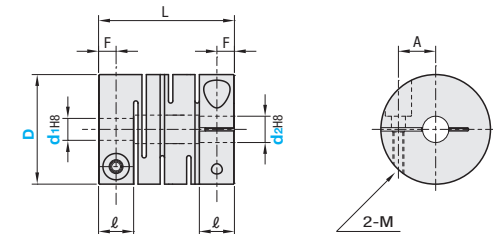
Slit Couplings

Extra Super Duralumin - Clamping Long For Servo Motors

■ Features: Long slit coupling for Servo Motors.

■ For Servo Motors

CPLCX (Clamping)



⚠ The lateral, angular, and axial misalignment values shown are for each occurring individually. When multiple misalignments are occurring simultaneously, the allowable maximum value of each will be reduced to 1/2.

⚠ Tolerances for d1 and d2 are values before slit machining.

⚠ For the selection criteria and alignment procedures, see P.1061.

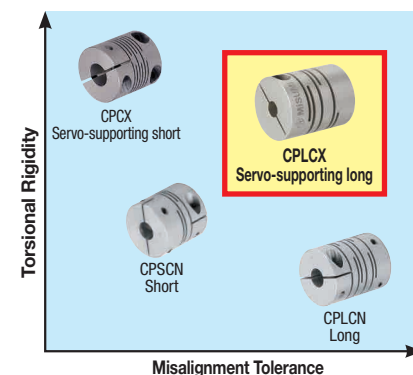
M Material	S Surface Treatment	A Accessory
Extra Super Duralumin	Clear Anodize	Hex Socket Head Cap Screw

Part Number Type	D	d1		d2		L	ℓ	M (Coarse)	A	F	Unit Price		
		5	6	5	6								
Clamping CPLCX	16	5	6	5	6	23	6.5	M2.5	5	3.25			
		6	6										
	20	5	6	6.35	8	26	7.5	M2.5	6.5	3.75			
		6	6	6.35	8								
		6.35		8									
		8		8									
	25	5		6		31	8.5	M3	9	4.2			
		6		6	8						10		
		6.35		8	10								
		8		8	10								
		10			10								
		10			10								
32	8		8	10	41	12	M4	11	6				
	10			10						12	14		
	12			12						14			
	12			12						14			

Part Number Type	D	Allowable Torque (N·m)	Angular Misalignment (°)	Lateral Misalignment (mm)	Static Torsional Spring Constant (N·m/rad)	Max. Rotational Speed (r/min)	Moment of Inertia (kg·m ²)	Allowable Axial Misalignment (mm)	Screw Tightening Torque (N·m)	Mass (g)
CPLCX	16	0.5	1	0.05	96	39000	3.7x10 ⁻⁷	±0.3	1.0	10.1
	20	1		0.10	204	31000	10.0x10 ⁻⁷	±0.3	1.0	17.6
	25	2		0.15	456	25000	2.9x10 ⁻⁶	±0.4	1.5	30.8
	32	4		0.15	600	19000	10.7x10 ⁻⁶	±0.4	2.5	70.4

◆ Features of CPLCX Provides torsional rigidity while allowing high misalignment

Ordering Example Part Number CPLCX20 - Shaft Bore Dia. d1 5 - Shaft Bore Dia. d2 6



Suitable for Servo Motors with high responsiveness. Reduces centering workload as the allowable misalignment is large.