

Blind Joint Components

Simple Joint Kit

Alterations necessary to use this component

Tapping
P.681

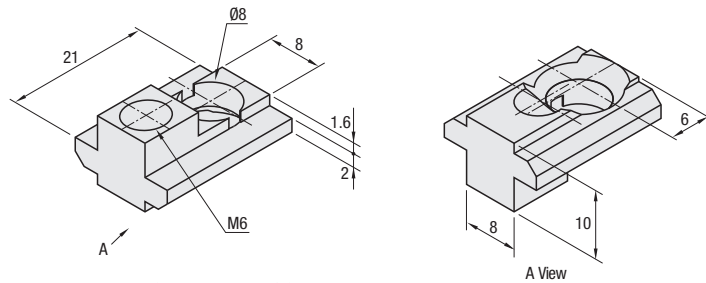
Feature: Only end tapping is required on extrusions. Simple joints with good workability.

RoHS10

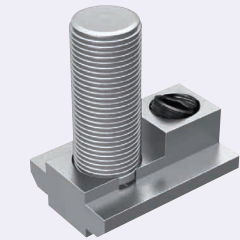
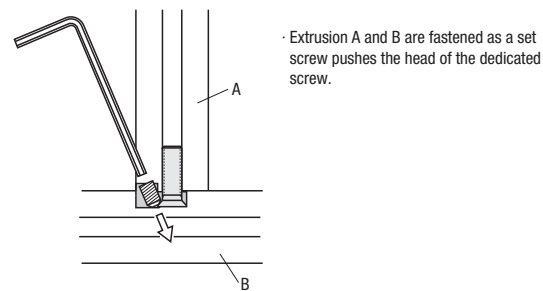
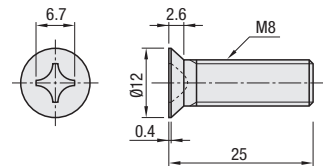
Part Name	Material	Surface Treatment
Main Body	S45C	Trivalent Chromate
Dedicated Screws	SCM435	Trivalent Chromate
Set Screw		Black Oxide Film

HUJ (Simple Joint Kit)

① Simple Joint Body (Set Screw Included)



② Dedicated Screws



(Reference) Corner section when using this joint



Part Number		Components	
Type	No.		
HUJ	6	① Simple Joint Body (Set Screw Included)	② Dedicated Screws

Simple Joints	Applicable Extrusion No.			
HUJ6	6-3030	6-3060	6-3090*	6-30120*
	6-5050			
	6-6060			

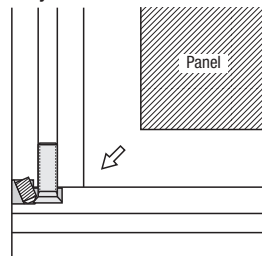
*Rectangle frame might have less fastening points depending on the direction of fastening. (Refer to the example of using HFS6-3090 on the next page.)



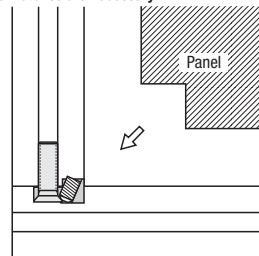
Example

To insert a panel into extrusion slots, notching may be required depending on the mounting direction of Simple Joint.

When notching is not necessary



Example of the case when panel notches are necessary

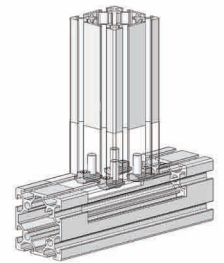


Example

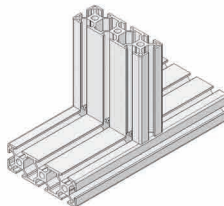
Simple Joint Connection (Connect the extrusion at the corners or the center.)

Step	Side View	Sketch Drawing
1	<p>HUJ6 ① Simple Joint Body ② Dedicated Screws</p>	<p>Tapping</p> <p>Tapping</p> <p>(A)</p> <p>HFS6-3030-1000-LTP</p>
2	<p>Do not tighten screws too much, or they will not fit into the slot of Extrusion (B).</p>	<p>Enlarged View</p> <p>Loosen the screw head for a half revolution from the condition of the screw fully inserted to keep some allowance at X part.</p>
3	<p>Insert into the slot of Extrusion (B).</p>	<p>(B)</p> <p>HFS6-3030-1000</p>
4	<p>Hex Wrench</p> <p>Tighten the set screw of Simple Joint Body with a hex wrench and the steps are finished.</p>	

<Example of HFS6-6060>
· Using 4 simple joints



<Example of HFS6-3090①>
· Using 3 simple joints



<Example of HFS6-3090②>
· 2 simple joints are used in this example.

