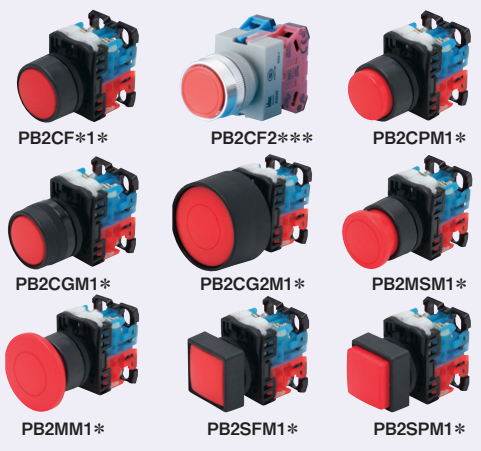


ミスミ

φ22 非照光 PB2シリーズ



IP65 UL CSA TÜV CE対応 CCC

在庫●印のもの
在庫品

在庫一印のもの
5 日日出荷

RoHS

ココが特長 汎用性の高い取付穴φ22の
中型非照光タイプ
●海外規格No.は P.213ページ参照
●製造元型番は P.213ページ参照

⚠️ 注意
スイッチ回路の使用条件毎の定格は下記詳細仕様をご覧ください。

Order 注文例
基本型番 - 色
PB2CFM10 - R



1個単位

型番 基本型番 色	形状	操作部	動作機能	構成	構造	保護構造	取得規格					端子	仕様グループ	¥パラチャージ 1~4個	¥通常単価 5~9個	¥スライド単価 10~19個	在庫				
							UL	CSA	TUV	CE	CCC										
PB2CFM10	丸 平形	φ24	モメンタリ	1a	分離	IP65f	●	●	●	●	●	M3.5 ねじ 端子	A	+360/個	371	361	●				
PB2CFM11				1a1b			●	●	●	●	●				593	578	●				
PB2CFA10				1a			●	●	●	●	●				835	813	—				
PB2CFA11				1a1b			●	●	●	●	●				1,057	1,030	—				
PB2CF2M10				1a			●	●	●	●	●				480	480	●				
PB2CF2M01				1b			●	●	●	●	●				480	480	●				
PB2CF2M11		φ40	丸 ガード	モメンタリ	1a1b		一体	●	●	●	●		●		780	780	●				
PB2CF2A01					1a			●	●	●	●		●		1,160	1,160	●				
PB2CF2A10					1b			●	●	●	●		●		1,160	1,160	●				
PB2CF2A11					1a1b			●	●	●	●		●		1,460	1,460	●				
PB2CPM10					φ29			丸 突形	オルタネイト	1a	分離		●		●	●	●	●	371	361	●
PB2CPM11										1a1b			●		●	●	●	●	593	578	●
PB2CGM10	1a	●	●	●		●	●			562		547	●								
PB2CGM11	1a1b	●	●	●		●	●			784		764	●								
PB2CG2M10	1a	●	●	●		●	●			1,131		1,102	●								
PB2CG2M11	1a1b	●	●	●		●	●			1,353		1,319	●								
PB2MSM10	φ40	キノコ	モメンタリ	1a	分離	●	●	●	●	●	472	460	●								
PB2MSM11				1a1b		●	●	●	●	●	694	676	●								
PB2MM10				1a		●	●	●	●	●	503	490	●								
PB2MM11				1a1b		●	●	●	●	●	725	707	●								
PB2SFM10				□24		正角 平形	1a	●	●	●	●	●	503	490	●						
PB2SFM11								1a1b	●	●	●	●	●	725	707	●					
PB2SPM10	1a	●	●		●			●	●	538	524	●									
PB2SPM11	1a1b	●	●		●			●	●	761	741	●									

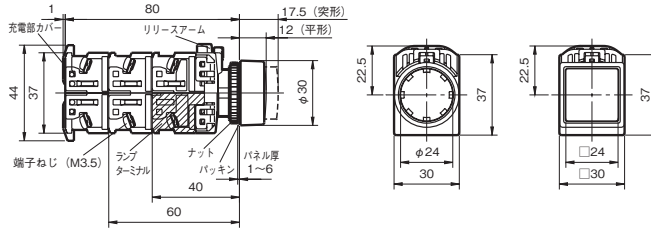
■部 1~4個のご注文は通常単価+パラチャージを申し受けます。
【計算例】 PB2CFM10-R を2個ご注文の場合
(通常単価371円+パラチャージ360円)×2個=1,462円

詳細仕様

仕様グループ	スイッチ回路定格					使用温度範囲 ℃	絶縁抵抗 DC500V メガ	耐電圧 AC 1分間 V			耐久性(万回以上)		質量約g
	定格絶縁電圧 (Ui)	定格通電電流 (Ith)	定格使用電流		充電部アース間			異極充電部間	充電部非充電部間	機械的		電氣的	
			交流	直流						モメンタリ	オルタネイト		
A	AC DC 600V	10A	24V	6A	4A	-20 ~ +70	100 MΩ 以上	2500	2500	-	100	50	35 ~ 40
			120V	6A	-								
			125V	-	1.3A								
			240V	6A	-								
			250V	-	0.45A								
B	AC DC 600V	10A	24V	10A	4A	-25 ~ +50	100 MΩ 以上	-	-	2500	50	50	38 ~ 68
			48V	-	2A								
			50V	7A	-								
			110V	5A	1.1A								
			220V	3A	0.6A								
			440V	1A	-								

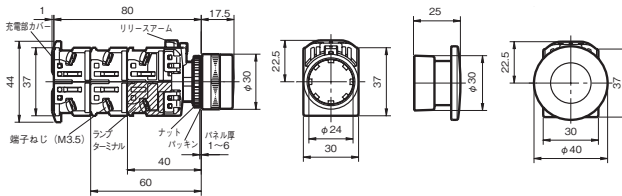
外形図

PB2***10



※弊社での販売は1,2接点品のみです。

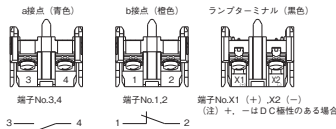
PB2CGM10, PB2M*1*



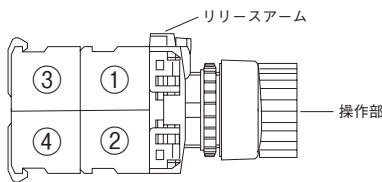
※弊社での販売は1,2接点品のみです。

端子配列

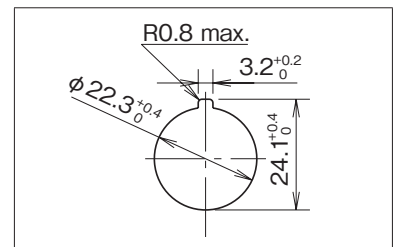
ねじ端子結線の取付φ22 照光式押しボタン



接点ユニットの取り付け位置



パネルカット寸法



豆知識

分離型と一体型の違い

一体型：操作部と本体が切り離せないタイプ。



分離型：操作部とブロックの部分は切り離せるタイプ。

押しボタン

非常停止・安全スイッチ

セレクトスイッチ

ロックスイッチ

トグルスイッチ

スライドスイッチ

スイッチユニット

フットスイッチ

レバースイッチ

その他スイッチ

テープスイッチ

スイッチ用ツマミ

保護/スイッチカバー

スイッチガード

スイッチ用銘板

スイッチ周辺部品

スイッチ 海外規格番号

掲載頁	ミスマ型番	メーカー型番	UL,cUL	CSA	TUV	CCC	
0162	ELS12**	XA1ELV3**Q4R	E68961/E305148	-	-	2005010305150899	
	ELS14**	XA1ELV4**Q4R	E68961/E305148	-	-	2005010305150899	
	EL24**	HW1ELV4**Q4R	E55996	-	-	2004010305132908	
	ELS24**	XW1ELV4**Q4MR	E68961/E305148	-	-	2005010305150897	
	EL34**	HN1ELV4**Q4R	E55996	-	-	2004010305132910	
	ELS34**	XN1ELV4**Q4MR	E305148	-	-	-	
	EBS12**	XA1E-BV3**R	E68961/E305148	-	-	2005010305150899	
	EBS14**	XA1E-BV4**R	E68961/E305148	-	-	2005010305150899	
	EBS1401EG	XA1E-BV401RH-EMO (本線のみ)	E68961/E305148	-	-	2005010305150899	
	EBB22**	HW1E-BV3**R	E68961	LR2374	-	2005103050145656	
	EBB24**	HW1E-BV4**R	E55996	-	-	2004010305132908	
	EBB24**	HW1E-BV4**R	E68961	LR2374	-	2005103050145656	
0164	EBS24**	XW1E-BV4**MR	E68961/E305148	-	-	2005010305150897	
	EBS2411EG	HW1WBV411R-EMO (本線のみ)	E68961/E305148	-	-	2005010305150897	
	EB34**	HN1E-BV4**R	E55996	-	-	2004010305132910	
	EBS34**	XN1E-BV4**MR	E305148	-	-	-	
	0139	PL1SRF16**	AR16F-M-NC1E3**	E44592	-	R50116759	2003010305071068
		PL1BRF11**	AH16*-TL-*1E3	E44592	LR20479	R2500087	2003010305071068
		PL1SRF14**	AL6H-*14*	E55996	LR2374	-	2003010305027381
		PL1SSF16**	AR16F-M-NC1E3**	E44592	-	R50116759	2003010305071068
		PL1BSF11**	AH16*-SL-*1E3	E44592	LR20479	R2500087	2003010305071068
		PL1SSF14**	AL6G-*14*	E55996	LR2374	-	2003010305027381
		PL1SCP16**	AR16E*-LC1E3**	E44592	-	R50116759	2003010305071068
		PL1BCPM11**	AH16*-ML-*1E3	E44592	LR20479	R2500087	2003010305071068
PL1SCP14**		AL6M-*14*	E55996	LR2374	-	2003010305027381	
PL2CF1**		AR22F*-ML-*E3*	E44592	LR20479	R5511062	2003010305063372	
PL2CP1**		AR22E*-ML-*E3*	E44592	LR20479	R5511062	2003010305063372	
PL2CP1**		LW1L*-2C14*	E55996	LR21451	J5511801	-	
0145	PL2CGM1**	AR22G*-L1**E3*	E44592	LR20479	R5511062	2003010305063372	
	PL2SFM1**	AR22FOM1**E3*	E44592	LR20479	R5511062	2003010305063372	
	PL2SF1**	LW2L*-C14*	E55996	LR21451	J5511801	-	
	PL2SPM1**	AR22EOM1**E3*	E44592	LR20479	R5511062	2003010305063372	
	PL2M1**	AR22M*-L1**E3*	E44592	LR20479	R5511062	2003010305063372	
	PL3CP1**	AR30E*-ML-*E3*	E44592	LR20479	R5511062	2003010305063384	
	0153	PL3CGM1**	AR30G*-L1**E3*	E44592	LR20479	R5511062	2003010305063384
		PL3PL**	AR30V*-L**E3*	E44592	LR20479	R5511062	2003010305063384
		PB1SRF16**	AR16F*-TL-C1**	E44592	-	R50116759	2003010305071068
		PB1BRF11**	AH16*-TL-11	E44592	LR20479	R2500087	2003010305071068
		PB1SSF16**	AR16F*-SL-C1**	E44592	-	R50116759	2003010305071068
		PB1BSFM11**	AH16*-SF-11	E44592	LR20479	R2500087	2003010305071068
PB1BSP16**		HAB2*-2C1**	E55996	LR21451	-	-	
PB1SCP16**		AR16E*-R-C1**	E44592	-	R50116759	2003010305071068	
PB1BCPM11**		AH16*-E-11	E44592	LR20479	R2500087	2003010305071068	
PB1BM16**		HAT1B*-3C1**	E55996	LR21451	-	-	
PB1BM11**		AH16*-M-1R11	E44592	LR20479	R2500087	2003010305071068	
0141		PB1BPLS06	AH16S-VRO**	E44592	LR20479	R2500087	2003010305071068
	PB1BPL06	AH16S-V1RO**	E44592	LR20479	R2500087	2003010305071068	
	PB2CF1**	AR22F*-R-1**	E44592	LR20479	R5511062	2003010305063372	
	PB2CF2M**	ABW1***	E68961	LR21451	-	-	
	PB2CF2A**	AOW1***	E68961	LR21451	-	-	
	PB2CPM1**	AR22EOR-1**	E44592	LR20479	R5511062	2003010305063372	
	PB2CGM1**	AR22G3R-1**	E44592	LR20479	R5511062	2003010305063372	
	PB2CG2M1**	AR22M3R-1**	E44592	LR20479	R5511062	2003010305063372	
	PB2MSM1**	AR22M4R-1**	E44592	LR20479	R5511062	2003010305063372	
	PB2MM1**	AR22MOR-1**	E44592	LR20479	R5511062	2003010305063372	
	PB2SFM1**	AR22FOS-1**	E44592	LR20479	R5511062	2003010305063372	
	PB2SPM1**	AR22EOS-1**	E44592	LR20479	R5511062	2003010305063372	
0155	PB3CFM1**	AR30FOR-1**	E44592	LR20479	R5511062	2003010305063384	
	PB3CF2M**	ABN1***	E68961	LR21451	-	2005010305145658	
	PB3CF2A**	AON1***	E68961	LR21451	-	2005010305145658	
	PB3CPM1**	AR30EOR-1**	E44592	LR20479	R5511062	2003010305063384	
	PB3CGM1**	AR30G1R-1**	E44592	LR20479	R5511062	2003010305063384	
	PB3CG2M1**	AR30M3R-1**	E44592	LR20479	R5511062	2003010305063384	
	PB3MSM1**	AR30M4R-1**	E44592	LR20479	R5511062	2003010305063384	
	PB3MM1**	AR30MOR-1**	E44592	LR20479	R5511062	2003010305063384	
	PB3PL**	AR30V5R-1**	E44592	LR20479	R5511062	2003010305063384	
	0189	SB1R214	AS6H-2Y1	E55996	LR2374	-	2003010305027381
		SB1R216	AR16PT-2C1B	E44592	-	R50116759	2003010305071068
		SB1R211**	AH16*-P2B11	E44592	LR20479	R2500088	2003010305071068
SB1R324		AS6H-3Y2	E55996	LR2374	-	2003010305027381	
SB1R326		AR16PT-3C2B	E44592	-	R50116759	2003010305071068	
SB1R322**		AH16*-PK3B22	E44592	LR20479	R2500088	2003010305071068	

掲載頁	ミスマ型番	メーカー型番	UL,cUL	CSA	TUV	CCC
0189	SB1S214	AS6Q-2Y1	E55996	LR2374	-	2003010305027381
	SB1S216	AR16PS-2C1B	E44592	-	R50116759	2003010305071068
	SB1S211**	AH16*-SP2B1	E44592	LR20479	R2500088	2003010305071068
	SB1S324	AS6Q-3Y2	E55996	LR2374	-	2003010305027381
	SB1S326	AR16PS-3C2B	E44592	-	R50116759	2003010305071068
	SB1S322**	AH16*-SPK3B22	E44592	LR20479	R2500088	2003010305071068
	SB1S214	AS6M-2Y1	E55996	LR2374	-	2003010305027381
	SB1C216	AR16PR-2C1B	E44592	-	R50116759	2003010305071068
	SB1C324	AS6M-3Y2	E55996	LR2374	-	2003010305027381
	SB1C326	AR16PR-3C2B	E44592	-	R50116759	2003010305071068
	SB2BC210	AR22PR-210B	E44592	LR20479	R5511060	2003010305063372
	SB2C210	ASW210	E68961	LR21451	-	2003010305027380
0195	SB2C211	AR22PR-211B	E44592	LR20479	R5511060	2003010305063372
	SB2C211	ASW211	E68961	LR21451	-	2003010305027380
	SB2C320	ASW320	E68961	LR21451	-	2003010305027380
	SB2BC311	AR22PR-311B	E44592	LR20479	R5511060	2003010305063372
	SB2BC322	AR22POR-3014B	E44592	LR20479	R5511060	2003010305063372
	SB3BC210	AR30PR-210B	E44592	LR20479	R5511060	2003010305063384
	SB3C210	ASN310	E68961	LR21451	-	2005010305145658
	SB3C211	AR30PR-211B	E44592	LR20479	R5511060	2003010305063384
	SB3C211	ASN311	E68961	LR21451	-	2005010305145658
	SB3C311	ASN111	E68961	LR21451	-	2005010305145658
	SB3BC311	AR30PR-311B	E44592	LR20479	R5511060	2003010305063384
	SB3BC322	AR30PR-322B	E44592	LR20479	R5511060	2003010305063384
0281	SB1R216-KL	AR16JT-2AC1A	E44592	-	R50116759	2003010305071068
	SB1R216-KA	AR16JT-2BC1A	E44592	-	R50116759	2003010305071068
	SB1R214-KL	AH164-J2A11A	E44592	LR20479	R2500088	2003010305071068
	SB1R214-KA	AH164-J2B11A	E44592	LR20479	R2500088	2003010305071068
	SB1S216-KL	AH165-SJ2A11A	E44592	LR20479	R2500088	2003010305071068
	SB1S216-KA	AH165-SJ2B11A	E44592	LR20479	R2500088	2003010305071068
	SB2BC210-KL	AR22JR-2A10A	E44592	LR20479	R5511060	2003010305063372
	SB2BC210-KA	AR22JR-2B10A	E44592	LR20479	R5511060	2003010305063372
	SB2BC211-KL	AR22JR-2A11A	E44592	LR20479	R5511060	2003010305063372
	SB2BC211-KA	AR22JR-2B11A	E44592	LR20479	R5511060	2003010305063372
	SB2BC311-KL	AR22JR-3A11A	E44592	LR20479	R5511060	2003010305063372
	SB2BC311-KA	AR22JR-3C11A	E44592	LR20479	R5511060	2003010305063372
0281	SB2BC210-KL	AR30JR-2A10A	E44592	LR20479	R5511060	2003010305063384
	SB2BC210-KA	AR30JR-2B10A	E44592	LR20479	R5511060	2003010305063384
	SB2BC211-KL	AR30JR-2A11A	E44592	LR20479	R5511060	2003010305063384
	SB2BC211-KA	AR30JR-2B11A	E44592	LR20479	R5511060	2003010305063384
	SB2BC311-KL	AR30JR-3A11A	E44592	LR20479	R5511060	2003010305063384
	SB2BC311-KA	AR30JR-3C11A	E44592	LR20479	R5511060	2003010305063384
	L1RF244**	AH164-ZT*E3	E44592	LR20479	R2500089	2003010305071044
	L1RF246**	AH165-ZT*E3	E44592	LR20479	R2500089	2003010305071044
	L1SRF246**	DR16FOM-E3*	E44592	-	R50116762	2003010305071044
	L1SF110**	AH16*-ZS*H3	E44592	LR20479	R2500089	2003010305071044
	L1SF220**	AH16*-ZS*H3	E44592	LR20479	R2500089	2003010305071044
	L1CF244**	AH16*-ZT*H3	E44592	LR20479	R2500089	2003010305071044
L1RF220**	AH16*-ZT*H3	E44592	LR20479	R2500089	2003010305071044	
L1SF24**	AH16*-ZS*E3	E44592	LR20479	R2500089	2003010305071044	
L1SF246**	DR16FOM-E3*	E44592	-	R50116762	2003010305071044	
L1SF110**	AH16*-ZS*H3	E44592	LR20479	R2500089	2003010305071044	
L1SF220**	AH16*-ZS*H3	E44592	LR20479	R2500089	2003010305071044	
L1CP24**	AH16*-Z*E3	E44592	LR20479	R2500089	2003010305071044	
L1SCP246**	DR16EOL-E3*	E44592	-	R50116762	2003010305071044	
L1CP110**	AH16*-Z*H3	E44592	LR20479	R2500089	2003010305071044	
L1CP220**	AH16*-Z*H3	E44592	LR20479	R2500089	2003010305071044	
L1D246**	DR16DOL-E3*	E44592	-	R50116762	2003010305071044	
L2D24**	DR22E3L-E3*	E44592	LR20479	R5511061	2003010305063383	
L2D224**	APW222D*	E68961	LR21451	-	2007010304226713	
L2D110**	DR22DOL-H3*	E44592	LR20479	R5511061	2003010305063383	
L2D2110**	APW2116D*	E68961	LR21451	-	2007010304226713	
L2D220**	DR22DOL-M3*	E44592	LR20479	R5511061	2003010305063	