


Electric Cylinder

<p>Standard Type</p> <p>P.6</p>	<p>New Products</p>  <p>40 Series E-ECTL40 P.6</p>	<p>New Products</p>  <p>50 Series E-ECTL50 P.8</p>	<p>New Products</p>  <p>60 Series E-ECTL60 P.10</p>	<p>New Products</p>  <p>75 Series E-ECTL75 P.12</p>	<p>New Products</p>  <p>90 Series E-ECTL90 P.14</p>
<p>High Thrust With Gearbox Type</p> <p>P.16</p>	<p>New Products</p>  <p>60 Series E-ECTLT60 P.16</p>	<p>New Products</p>  <p>75 Series E-ECTLT75 P.18</p>	<p>New Products</p>  <p>90 Series E-ECTLT90 P.20</p>	<p>New Products</p>  <p>110 Series E-ECTLT110 P.22</p>	
<p>Radial Type</p> <p>P.24</p>	<p>New Products</p>  <p>5 Series E-ECRL5 P.24</p>	<p>New Products</p>  <p>8 Series E-ECRL8 P.26</p>	<p>New Products</p>  <p>10 Series E-ECRL10 P.28</p>		

Aluminum Alloy Linear Actuator

<p>Ball Screw Drive</p>	<p>New Products</p>  <p>Guide Built in Type Semi-Sealed Type E-MGT Economy Catalogue P155-P166</p>	<p>New Products</p>  <p>Guide Built in Type Fully-Sealed Type E-MCT Economy Catalogue P167-P178</p>	<p>New Products</p>  <p>Standard Linear Guide Semi-Sealed Type E-MTH Economy Catalogue P183-P214</p>	<p>New Products</p>  <p>Standard Linear Guide Fully-Sealed Type E-MCH Economy Catalogue P215-P242</p>
<p>Timing Belt Drive</p>	<p>New Products</p>  <p>Precision Belt Driven Semi-Sealed Type E-MTB Economy Catalogue P247-P268</p>	<p>New Products</p>  <p>Precision Belt Driven Fully-Sealed Type E-MCB Economy Catalogue P269-P290</p>	<p>New Products</p>  <p>High Speed Type Semi-Sealed Type E-MUTB Economy Catalogue P291-P306</p>	

*Note: Aluminum alloy actuator specification details are not included in this catalog.

Please visit the MISUMI website or the Economy paper catalogue for detail specification.

*The listed prices in this catalog are pre-tax reference prices. Please refer to the official website for actual order prices.

Electric Cylinder

An electric cylinder converts motor rotation into linear motion via a ball screw for push rod operation.

Compared to hydraulic and pneumatic types, it offers energy efficiency, compact size, low noise, eco-friendliness, and low maintenance, reducing overall costs.

MISUMI cylinders feature an aluminum alloy body, ball screw, push rod, customizable motor mounts, and optional sensors.

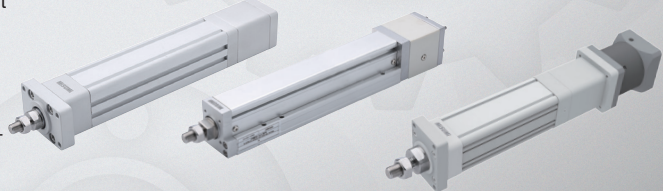
High Positioning Repeatability

Smooth Operation

Easy Maintenance

Big order
Discount

20%



	Standard Type	Radial Type													
Positioning Repeatability	± 0.01 (E-ECTL90 model: ± 0.02)	± 0.01													
Rod Non-rotation Accuracy	<p>Push rod rotation $\leq \pm 1^\circ$</p>	<p>Push rod rotation $\leq \pm 0^\circ$</p>													
Feature	<ul style="list-style-type: none"> Used for vertical installation and axial thrust, economical pricing Ideal for pressing, riveting, clamping, and push-pull application 	<ul style="list-style-type: none"> Used for horizontal installation in long-stroke application. Can handles radial loads for precise linear transmission 													
Structure	<p>Slide Bush Structure</p>	<p>Built-in Linear Guide Structure</p>													
Mounting Method	<p>Main Body Installation</p> <p>Front Flange Installation</p>	<p>Main Body Installation</p> <table border="1"> <thead> <tr> <th></th> <th>E-ECRL5</th> <th>E-ECRL8·10</th> </tr> </thead> <tbody> <tr> <td rowspan="2">Mounting Hole Dimension</td> <td>① Top mounting $\phi 4.4$</td> <td>① Top mounting $\phi 5.4$</td> </tr> <tr> <td>② Bottom mounting 21.6</td> <td>② Bottom mounting 37.5</td> </tr> <tr> <td rowspan="2">Bolt Size</td> <td>① M4</td> <td>M5</td> </tr> <tr> <td>② M5</td> <td>M6</td> </tr> </tbody> </table> <p>Horizontal Installation</p> <p>With Guide Mechanism</p> <p>Front-End Installation</p> <p>Rear-End Installation (Parallel Type Only)</p>		E-ECRL5	E-ECRL8·10	Mounting Hole Dimension	① Top mounting $\phi 4.4$	① Top mounting $\phi 5.4$	② Bottom mounting 21.6	② Bottom mounting 37.5	Bolt Size	① M4	M5	② M5	M6
	E-ECRL5	E-ECRL8·10													
Mounting Hole Dimension	① Top mounting $\phi 4.4$	① Top mounting $\phi 5.4$													
	② Bottom mounting 21.6	② Bottom mounting 37.5													
Bolt Size	① M4	M5													
	② M5	M6													

■ Specification Table

Type	Rated Thrust (N)	Max Speed (mm/s) ^{※1}	Main Body Width	Ball Screw	Model		Stroke S 50mm Increment	Motor type		Max. Payload(kg)		Page
					Type	Lead (mm)		Brand	Power W	Horizontal	Vertical	
Standard Type	170	250	□45	Φ12 (C7)	E-ECTL40	5	50~500	P (Panasonic)	50W	15	5	P.6
	340					100W			30	10		
	85					500			50W	10	2.5	
	170	500	□53	Φ16 (C7)	E-ECTL50	10	50~600	M (Motor table)	100W	15	5	P.8
	680					200W			50	15		
	340					500			30	8		
	1360	250	□64	Φ16 (C7)	E-ECTL60	5	50~600	Z (Customized)	400W	110	33	P.10
	680	500				88			22			
	340	1000				40			8			
	2550	250	□75	Φ20 (C7)	E-ECTL75	5	50~800	P (Panasonic)	750W	200	70	P.12
	1270	500				100			35			
	640	1000				50			18			
	5100	166	□93	Φ32 (C7)	E-ECTL90	5	50~1000	M (Motor table)	1000W	405	145	P.14
	7850	333				1500W			608	218		
	10200	500				2000W			811	291		
	2550	666	82×86	Φ16 (C7)	E-ECRL10	10	50~800	Z (Customized)	1000W	202	72	P.24
	3825	1000				1500W			304	109		
	5100	250				2000W			405	145		
1275	500	82×75	Φ16 (C7)	E-ECRL8	20	50~800	P (Motor table)	1000W	101	36	P.26	
1912					666			1500W	152	54		
2550					1000			2000W	202	72		
Radial Type	340	250	54×55	Φ12 (C7)	E-ECRL5	5	50~600	M (Motor table)	100W	30	10	P.24
	170	500				15			5			
	85	1000				20			2.5			
	683	250	82×75	Φ16 (C7)	E-ECRL8	5	50~800	Z (Customized)	200W	50	15	P.26
	1388	500				400W			30	8		
	340	1000				200W			18	3		
	694	250	82×86	Φ16 (C7)	E-ECRL10	10	50~800	P (Motor table)	400W	110	33	P.28
	174	500				750W			88	22		
	347	1000				400W			40	10		

Type	Reduce ratio	Rated Thrust (N)	Max Speed (mm/s) ^{※1}	Main Body Width	Ball Screw	Model		Stroke S 50mm Increment	Motor type		Max. Payload(kg)		Page
						Type	Lead (mm)		Brand	Power W	Horizontal	Vertical	
High Thrust with Gearbox Type	3 : 1	4080	83	□64	Φ16 (C7)	E-ECLTL60	05	50~600	P (Panasonic)	400W	324	116	P.16
	3 : 1	2040	166				10				162	58	
	5 : 1	3400	100				20				270	97	
	3 : 1	7650	83	□75	Φ20 (C7)	E-ECLTL75	05	50~800	M (Motor table)	750W	608	218	P.18
	3 : 1	3825	166				10				304	109	
	5 : 1	6375	100				20				507	182	
	3 : 1	1912	333	□93	Φ32 (C7)	E-ECLTL90	05	50~1000	Z (Customized)	1000W	1217	437	P.20
	3 : 1	7650	111				10				608	218	
	5 : 1	3187	200				20				1014	364	
	3 : 1	15301	55	□110	Φ40 (C7)	E-ECLTL110	10	50~1000	P (Motor table)	1500W	913	327	P.22
	3 : 1	7650	111				20				1522	546	
	5 : 1	12750	66				1000W				304	109	
	3 : 1	11475	111	□110	Φ40 (C7)	E-ECLTL110	10	50~1000	M (Mitsubishi) ^{※2}	1000W	507	182	P.22
	5 : 1	19126	66				20				761	273	
	3 : 1	3825	222				1500W				456	163	
	5 : 1	6375	133	□110	Φ40 (C7)	E-ECLTL110	10	50~1000	Z (Customized)	2000W	1217	437	P.22
	3 : 1	5737	222				20				2029	728	
	5 : 1	9563	133				2000W				608	218	
	3 : 1	15301	111	□110	Φ40 (C7)	E-ECLTL110	10	50~1000	Z (Customized)	2000W	1014	364	P.22
	5 : 1	25501	66				20				1014	364	
	3 : 1	7650	222				20				1014	364	

※1 The max speed is based on a servo motor speed of 3000rpm (2000rpm for motors above 1000W). For strokes exceeding 300mm (500 mm for radial type), the speed should be reduced to avoid resonance.

※2 Motor code M for motors above 1000W applies only to M1000W and M1500W.

※3 Motor acceleration and deceleration time is recommended to be set at 0.2 seconds or more.

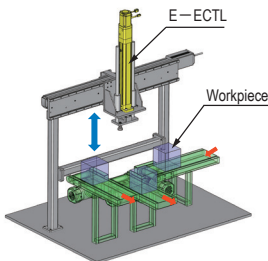
■ Usage Precautions

- Operate at -20°C to 40°C; avoid corrosive, flammable, electromagnetic, or moist environments
- Ensure a vibration and pressure-resistant installation surface and flatness (±0.05mm/500mm).
- Use a brake-equipped motor for vertical mounting.
- Protect the cylinder from vibration, impact, rotation, and deformation.

■ Standard Electric Cylinder Usage Example

Application: Transfer Mechanism

- Use the cylinder's telescopic function for handling workpieces on conveyors at different heights.
- Ensures smooth, quick elevation while preventing workpiece damage



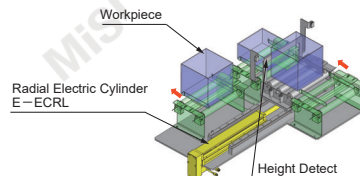
■ Motor Code and Corresponding Brand

Code	Brand	
	≤750W	≥1000W
P	Panasonic	Panasonic / Delta / HCFA
M	Mitsubishi / Yaskawa / Delta / Siemens / Inovance Xinjie / Leadshine / Omron / HCFA	Mitsubishi
Z	Customized	

■ Radial Load Electric Cylinder Usage Example

Application: Sorting Mechanism

- Use the horizontal cylinder's push-pull function to sort items by height on the same conveyor
- The cylinder-based sorting mechanism ensures fast and smooth transport.



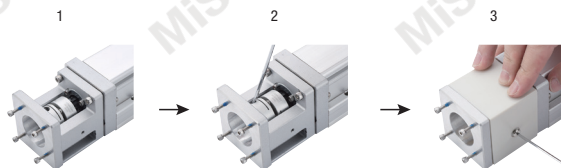
Motor Installation and Timing Belt Tension Adjustment Method

Standard Type Direct Connection E-ECTL



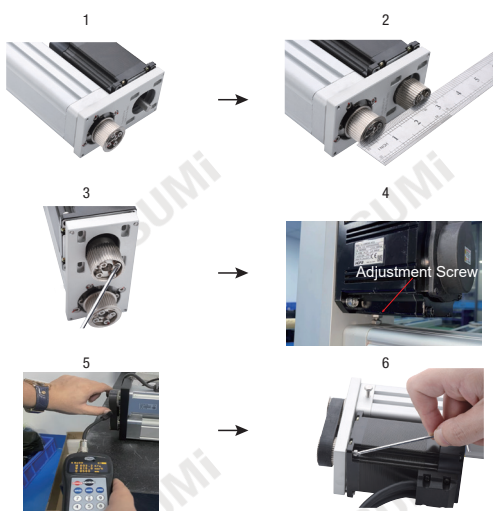
- 1) Open the plastic hole cover and manually turn the coupling bolt to align with the hole.
- 2) Use a hex wrench to loosen the coupling bolt, then tighten it after installing the motor.
- 3) Finally, reinsert the plastic hole cover to complete the motor installation.

Radial Type Direct Connection E-ECRL



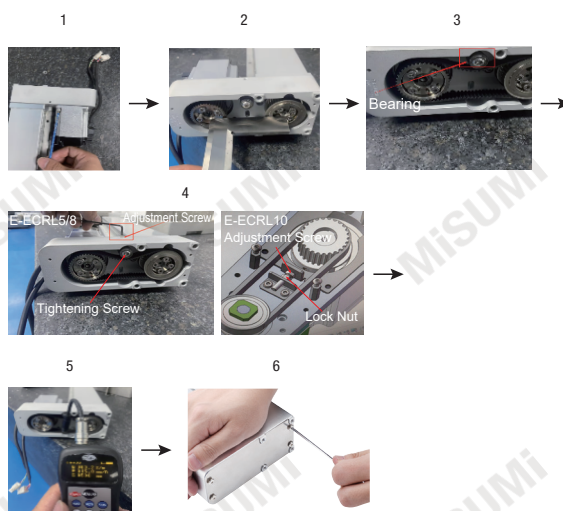
- 1) Remove the plastic cover and loosen the bolts on the coupling.
- 2) Install the motor and tighten the bolts.
- 3) Finally, reattach the plastic cover on the coupling seat to complete the motor installation.

Standard Type Parallel Connection E-ECTL



- 1) Remove the motor cover and mount the motor, leaving motor tightening screws loose for tension adjustment.
- 2) Align and install the timing pulley on the motor shaft parallel to the ball screw pulley.
- 3) Tighten the pulley screw and install the timing belt.
- 4) Adjust belt tension using adjusting screw.
- 5) Measure tension with a tester to match the reference value (see table).
- 6) Tighten motor screws and reattach the cover to finish installation.

Radial Type Parallel Connection E-ECRL



- 1) Remove the cover, install the motor, and tighten the screws.
- 2) Install the timing pulley on the motor side, ensuring it is parallel to the pulley on the ball screw end, and tighten the pulley screws.
- 3) Fit the timing belt and ensure the tension bearing is positioned above the belt (E-ECRL5/8).
- 4) Adjust belt tension with the adjustment screw and secure with fastening screws.
- 5) Measure belt tension with a tester to match the reference range (see table).
- 6) Reattach the cover to finish motor installation and pulley adjustment.

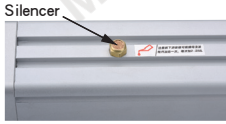
Electric cylinder belt tension value (reference)

Motor Power (W)	Electric Cylinder Mode	Timing Belt Type	Belt Width (mm)	Pulley Center Distance	Belt Thickness (mm)	Tension Value (N) (reference)
100W	E-ECTL40/E-ECRL5	2GT	12	55	1.3	12~17
200W	E-ECTL50/E-ECRL8	3GT	15	81	2.5	32~42
	E-ECTL60/E-ECRL8					
400W	E-ECTLT60	5GT	25	104	4	60~75
	E-ECTL75/E-ECRL10					
750W	E-ECTL75	8YU	30	128	5.2	125~155
1000W	E-ECTL90/E-ECTLT90	8M	50	160	6.1	409~450
1500W						
2000W	E-ECTL90					
	E-ECTL110					573~630

Regular Lubrication Method

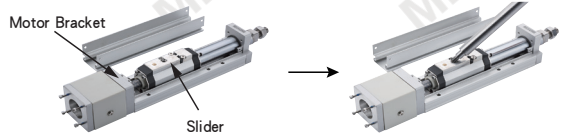
The Electric Cylinder requires regular lubrication. Initially, add grease after 300 hours of operation. Subsequently, lubricate every 2000 hours. Use general lithium-based grease for lubrication. Mobil lithium grease EP3 is recommended. Use a grease gun for lubrication. Do not use liquid lubricants.

Standard Type/High Thrust with Gear Box Type



- 1) Remove the silencer and apply grease to the ball screw.
 - 2) Manually extend the push rod several times to ensure the entire screw is lubricated.
- ※ Standard E-ECL75 or above, and high-thrust models, include grease nipples for bearing lubrication

Radial Type



- 1) Open the cylinder cover and apply oil to the bearings in the motor mount and the sliding table
- 2) Manually move the sliding table and apply oil every 15mm along the stroke direction

Sensor Parameters

Model	Output Method	Installation Method	Sensing Method	Operating Voltage	Current Consumption	Output Current	Repeatability	Switching Frequency	Indicator Light	Operating Temperature	Cable Length	Protection Rating
DMST DMSE	D: DC Two-Wire Normally Open	Clamp to Cylinder Slot	Magnet Ring NS Center	5~30V DC	≤0.05mA	≤100mA	<0.2mm	≤2000Hz	Red Light Indicator	-20~+70°C	2m	IP67

Recommended Servo Motor List

Brand	Motor code	With / Without Brake	Power	Voltage	Servo Motor Model	Driver Model
Panasonic	P	Without Brake (Horizontal Use)	50W	220V	MSMF5AZL1U2M	MADLN05SE
		With Brake (Vertical Use)			MSMF5AZL1V2M	
		Without Brake (Horizontal Use)	100W		MSMF012L1U2M	MADLN05SE
		With Brake (Vertical Use)			MSMF012L1V2M	
		Without Brake (Horizontal Use)	200W		MHMF022L1U2M	MADLN15SE
		With Brake (Vertical Use)			MHMF022L1V2M	
		Without Brake (Horizontal Use)	400W		MHMF042L1U2M	MBDLN25SE
		With Brake (Vertical Use)			MHMF042L1V2M	
		Without Brake (Horizontal Use)	750W		MHMF082L1U2M	MCDLN35SE
		With Brake (Vertical Use)			MHMF082L1V2M	
		Without Brake (Horizontal Use)	1000W		MDMF102L1G6M	MDDL45SE
		With Brake (Vertical Use)			MDMF102L1H6M	
		Without Brake (Horizontal Use)	1500W		MDMF152L1G6	MDDL55SE
		With Brake (Vertical Use)			MDMF152L1H6	
Without Brake (Horizontal Use)	2000W	MDMF202L1G6	MEDLN83SE			
With Brake (Vertical Use)		MDMF202L1H6				
Mitsubishi	M	Without Brake (Horizontal Use)	50W	220V	HG-MR053	MR-J4-10B
		With Brake (Vertical Use)			HG-MR053B	
		Without Brake (Horizontal Use)	100W		HG-KN13J-S100	MR-JE-10A
		With Brake (Vertical Use)			HG-KN13BJ-S100	
		Without Brake (Horizontal Use)	200W		HG-KN23J-S100	MR-JE-20A
		With Brake (Vertical Use)			HG-KN23BJ-S100	
		Without Brake (Horizontal Use)	400W		HG-KN43J-S100	MR-JE-40A
		With Brake (Vertical Use)			HG-KN43BJ-S100	
		Without Brake (Horizontal Use)	750W		HG-KN73J-S100	MR-JE-70A
		With Brake (Vertical Use)			HG-KN73BJ-S100	
		Without Brake (Horizontal Use)	1000W		HG-SN102J-S100	MR-JE-100A
		With Brake (Vertical Use)			HG-SN102BJ-S100	
		Without Brake (Horizontal Use)	1500W		HG-SN152J-S100	MR-JE-200A
		With Brake (Vertical Use)			HG-SN152BJ-S100	
Yaskawa	M	Without Brake (Horizontal Use)	50W	220V	SGM7J-01AFC6S	SGD7S-R90A00A002
		With Brake (Vertical Use)			SGM7J-01AFC6E	
		Without Brake (Horizontal Use)	100W		SGM7J-01AFC6S	SGD7S-R90A00A002
		With Brake (Vertical Use)			SGM7J-01AFC6E	
		Without Brake (Horizontal Use)	200W		SGM7J-02AFC6S	SGD7S-1R6A00A002
		With Brake (Vertical Use)			SGM7J-02AFC6E	
		Without Brake (Horizontal Use)	400W		SGM7J-04AFC6S	SGD7S-2R8A00A002
		With Brake (Vertical Use)			SGM7J-04AFC6E	
		Without Brake (Horizontal Use)	750W		SGM7J-08AFC6S	SGD7S-5R5A00B202
		With Brake (Vertical Use)			SGM7J-08AFC6E	
Delta	M	Without Brake (Horizontal Use)	100W	220V	ECM-B3L-C20401RS1	ASD-B3-0121-L
		With Brake (Vertical Use)			ECM-B3L-C20401SS1	
		Without Brake (Horizontal Use)	200W		ECM-B3M-C20602RS1	ASD-B3-0221-L
		With Brake (Vertical Use)			ECM-B3M-C20602SS1	
		Without Brake (Horizontal Use)	400W		ECM-B3M-C20604RS1	ASD-B3-0421-L
		With Brake (Vertical Use)			ECM-B3M-C20604SS1	
		Without Brake (Horizontal Use)	750W		ECM-B3M-C20807RS1	ASD-B3-0721-L
	With Brake (Vertical Use)	ECM-B3M-C20807SS1				
	P	Without Brake (Horizontal Use)	1000W		ECM-B3M-E21310RS1	ASD-B3-0121-L
		With Brake (Vertical Use)			ECM-B3M-E21310SS1	
		Without Brake (Horizontal Use)	1500W		ECM-B3M-E21315RS1	ASD-B3-1521-L
		With Brake (Vertical Use)			ECM-B3M-E21315SS1	
		Without Brake (Horizontal Use)	2000W		ECM-B3M-E21320RS1	ASD-B3-2023-L
		With Brake (Vertical Use)			ECM-B3M-E21320SS1	

Representative model : E-ECTL40-05-S100-BC-P50W-NA-C0

5,648,486 Sold from 1 pc
VND/pc

4,518,789 From 10 pcs
VND/pc



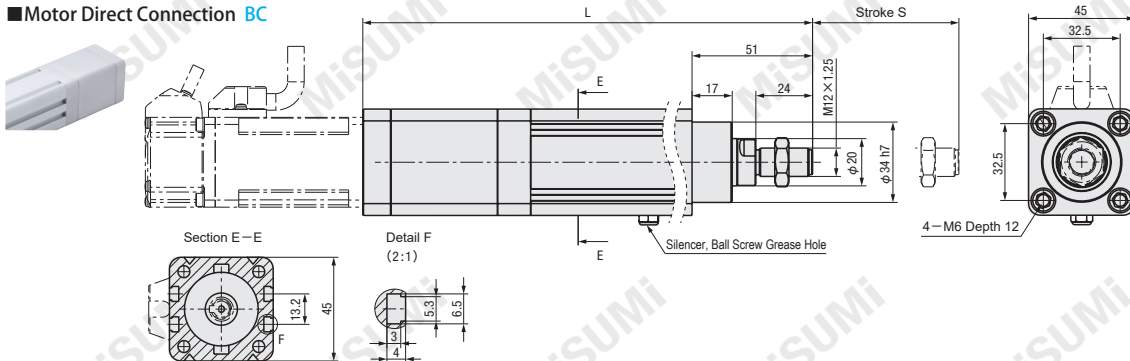
Quantity	Unit Price	Discount	Day To Ship
1	5,648,486	-	15
10	4,518,789	20%	18



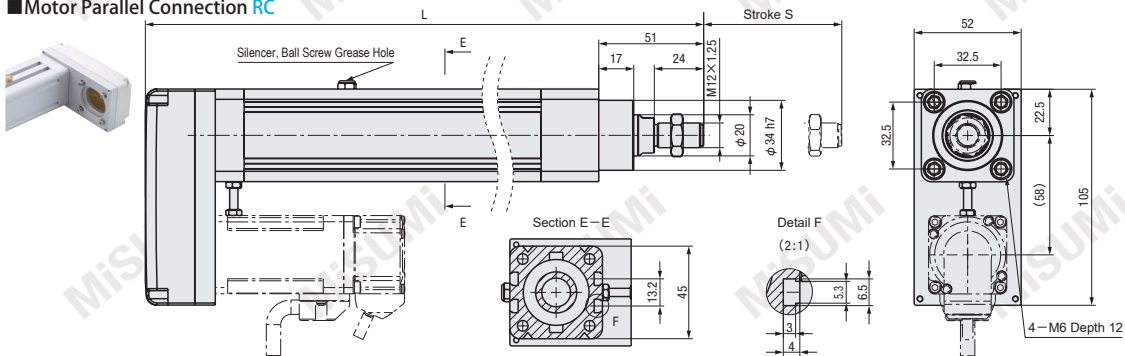
If the desired quantity exceeds the above, please contact us for delivery time.
The actual shipping date is based on the date displayed on the web at the time of ordering.

Components	Main Body	Slide Bush	Push Rod	Motor Bracket
Material	Aluminum Alloy	Aluminum Alloy	S45C	Aluminum Alloy
Surface treatment	Clear Anodized	-	Chrome Plating	Clear Anodized

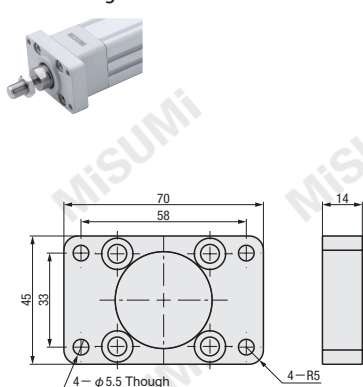
Motor Direct Connection **BC**



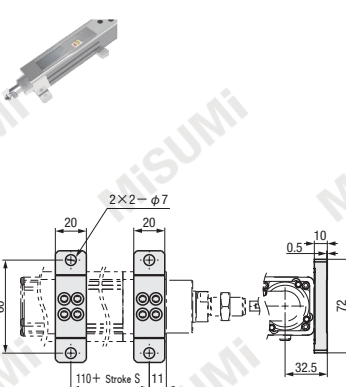
Motor Parallel Connection **RC**



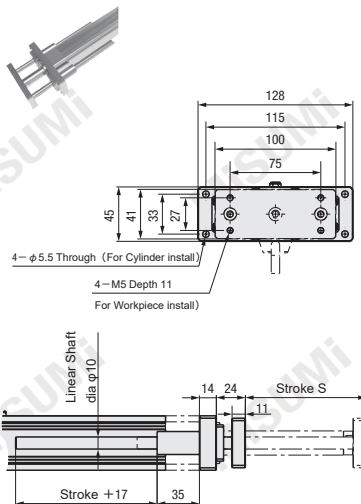
Font Flange **FA**



Horizontal **HA**



With Guide Mechanism **GD**



Model		Stroke S 50mm Increment	Motor Direction	Motor Type		Mounting Method	Number of Sensor	Rated Thrust (N)	Max Speed (mm/s) ^{※1}	Max. Payload(kg)		Positioning Repeatability (mm)	Body Width	Ball Screw
Type	Lead (mm)			Brand	Power W					Horizontal	Vertical			
E-ECTL40	05	50~500	BC (Direct connection)	P(Panasonic)	50W	NA(Body Mounting) FA(Front Flange) HA(Horizontal) GD(With Guiding Mechanism)	C0(Not provided) C1(1 pc) C2(2 pcs) C3(3 pcs)	170	250	15	5	±0.01	□45	Φ12 (C7)
				M(Motor table)	100W					30	10			
	RC (Parallel connection)		Z(Customized)	50W	85	500		10	2.5					
				100W	170	15		5						

※1 Maximum speed is based on a 3000 rpm servo motor. For strokes over 300 mm, reduce speed to prevent resonance.

⚠ Motor not included; customers must purchase separately.

⚠ When the motor code is specified as Z, the motor shaft diameter and installation dimensions must be provided.

⚠ Motor acceleration and deceleration time is recommended to be set at 0.2 seconds or more.

Order

Please follow the selection steps ①~⑦ select the model and parameters to order.

Model(①Type) - ②Lead - ③Stroke S - ④Motor Direction - ⑤Motor type - ⑥Mounting method - ⑦Number of Sensor
 E-ECTL40 - 05 - S100 - BC - P100W - NA - C0

E-ECTL40 Stroke S		50	100	150	200	250	300	350	400	450	500
L	Direct connection	286	336	386	436	486	536	586	636	686	736
	Parallel connection	263	313	363	413	463	513	563	613	663	713
Body mass (kg) (Reference)	Direct connection	1.39	1.62	1.86	2.09	2.33	2.56	2.79	3.03	3.26	3.49
	Parallel connection	1.59	1.82	2.06	2.29	2.52	2.76	2.99	3.22	3.46	3.69

⚠ When choose GD (Guide mechanism), the total length L is L-13

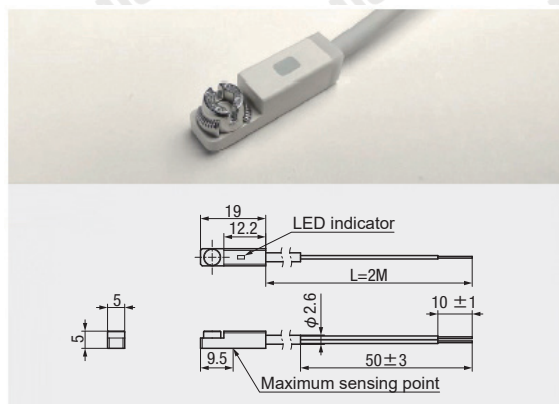
Components

Component name		Type	50W · 100W			Code	Brand	
Direct Connection	Coupling	Clamping tie with Keyway	Outside diameter	Ball screw side	Motor side	P	Panasonic	
			Φ20	Φ8	Φ8			
Parallel connection	Ball screw pulley	Nickel plated steel	2GT-40Teeth × Φ8			M	Mitsubishi / Yaskawa / Delta / Siemens Inovance / Xinjie / Leadshine / Omron / HCFA	
	Motor pulley		2GT-40Teeth × Φ8					
	Timing belt	Glass fiber core rubber	196-2GT-12			Z	Customized	
Sensor(Optional)		DMST-020-2M (DC 2-wire, Normal open)						

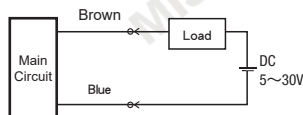
Motor Code and Brand

Code	Brand
P	Panasonic
M	Mitsubishi / Yaskawa / Delta / Siemens Inovance / Xinjie / Leadshine / Omron / HCFA
Z	Customized

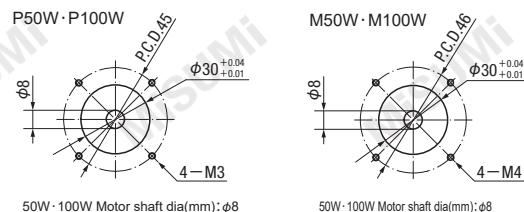
E-ECTL Sensor Specification



Sensor Wiring Diagram



Motor Mounting Hole Dimension



How to search on website

Method 1 Search on MISUMI official website

Type:

Method 2 Step 1 Search on MISUMI official website

Keyword:

Step 2 Select MISUMI economy series brand

MISUMI economy



Representative model : E-ECTL50-05-S100-BC-P200W-NA-C0

5,648,486 Sold from 1 pc
 VND/pc
4,518,789 From 10 pcs
 VND/pc

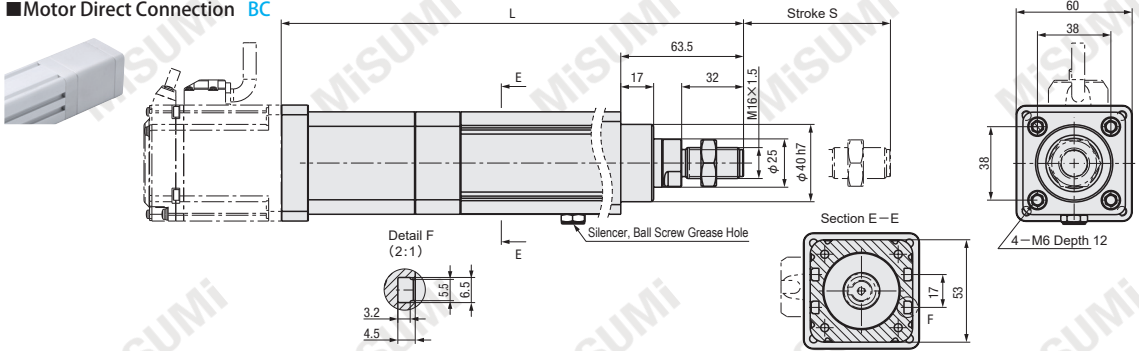
Quantity	Unit Price	Discount	Day To Ship
1	5,648,486	-	15
10	4,518,789	20%	18



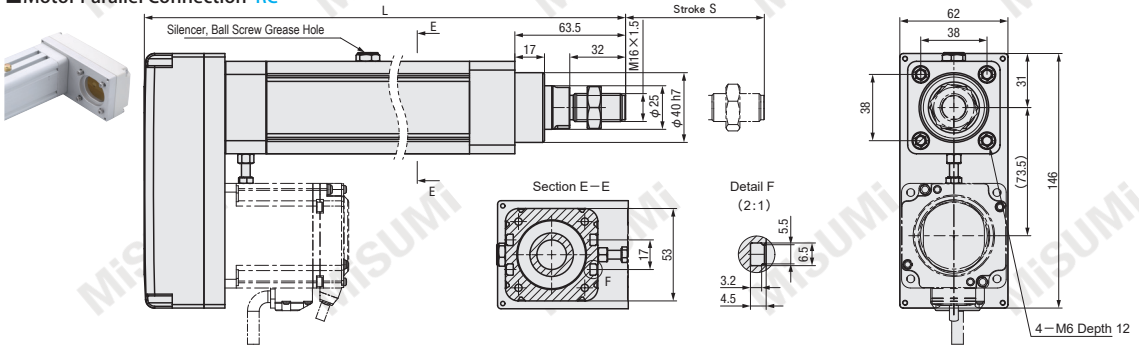
If the desired quantity exceeds the above, please contact us for delivery time.
 The actual shipping date is based on the date displayed on the web at the time of ordering.

Components	Main Body	Slide Bush	Push Rod	Motor Bracket
Material	Aluminum Alloy	Aluminum Alloy	S45C	Aluminum Alloy
Surface Treatment	Clear Anodized	-	Chrome Plating	Clear Anodized

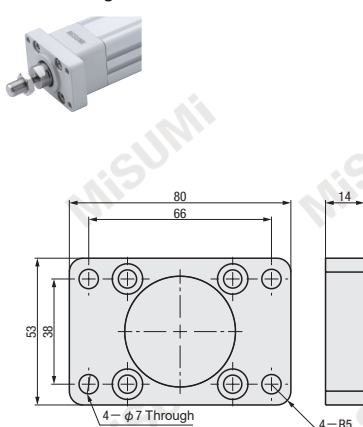
Motor Direct Connection **BC**



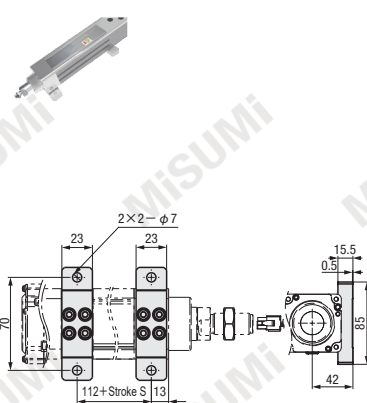
Motor Parallel Connection **RC**



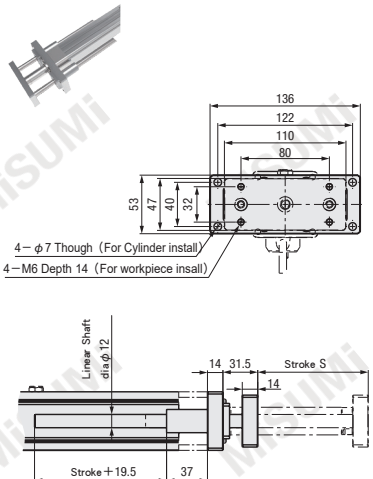
Font Flange **FA**



Horizontal **HA**



With Guide Mechanism **GD**



Model		③ Stroke S	④ Motor Direction	⑤ Motor type		⑥ Mounting Method	⑦ Number of Sensor	Rated Thrust (N)	Max Speed (mm/s) ^{※1}	Max. Payload(kg)		Positioning Repeatability (mm)	Body Width	Ball Screw
① Type	② Lead (mm)	50mm Increment		Brand	Power W				Horizontal	Vertical				
E-ECTL50	05	50~500	BC(Direct connection) RC(Parallel connection)	P(Panasonic) M(Motor table) Z(Customized)	200W	NA(Body Mounting) FA(Front Flange) HA(Horizontal) GD(With Guide Mechanism)	C0(Not provided) C1(1 pc) C2(2 pcs) C3(3 pcs)	680	250	50	15	±0.01	□53	Φ12 (C7)
	10		340	500		30	8							

※1 Maximum speed is based on a 3000 rpm servo motor. For strokes over 300 mm, reduce speed to prevent resonance.

⚠ Motor not included; customers must purchase separately.

⚠ When the motor code is specified as Z, the motor shaft diameter and installation dimensions must be provided.

⚠ Motor acceleration and deceleration time is recommended to be set at 0.2 seconds or more.

Order Please follow the selection steps ①~⑦ select the model and parameters to order.

Model(① Type) - Lead - Stroke S - Motor Direction - Motor type - Mounting Method - Number of Sensor

E-ECTL50 - 10 - S200 - RC - M200W - FA - C1

E-ECTL50 Stroke S		50	100	150	200	250	300	350	400	450	500
L	Direct connection	320	370	420	470	520	570	620	670	720	770
	Parallel connection	297	347	397	447	497	547	597	647	697	747
Body mass (kg) (Reference)	Direct connection	2.16	2.48	2.8	3.11	3.43	3.75	4.06	4.38	4.7	5.01
	Parallel connection	2.36	2.68	3	3.31	3.63	3.95	4.26	4.58	4.9	5.21

⚠ When choose GD (Guide mechanism), the total length L is L-18

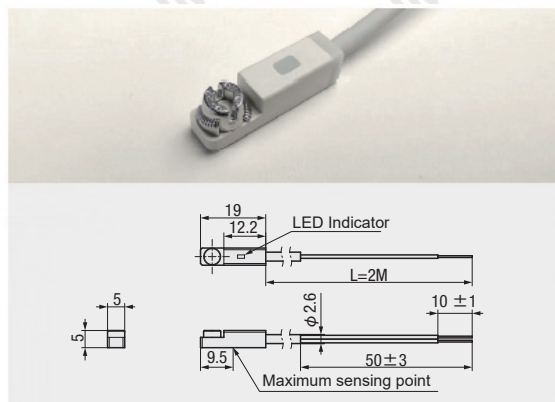
■ Components

Component name		Type	200W		
Direct connection	Coupling	Clamping tie with Keyway	Outside diameter	Ball screw side	Motor side
			Φ30	Φ10	Φ14 (PanasonicΦ11)
Parallel connection	Ball screw pulley	Nickel plated steel	3GT-41 Teeth × Φ10		
	Motor pulley		3GT-41Teeth × Φ14(PanasonicΦ11)		
	Timing belt	Glass fiber core rubber	270-3GT-15		
Sensor (Optional)		DMST-020-2M (DC 2-wire, Normal open)			

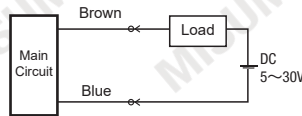
■ Motor Code and Brand

Code	Brand
P	Panasonic
M	Mitsubishi / Yaskawa / Delta / Siemens Inovance / Xinjie / Leadshine / Omron / HCFA
Z	Customized

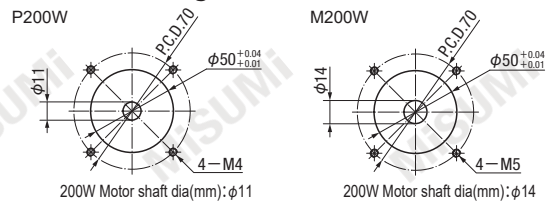
■ E-ECTL Sensor Specification



■ Sensor Wiring Diagram



■ Motor Mounting Hole



How to search on website

Method 1 Search on MISUMI official website
Type:

Method 2 Step 1 Search on MISUMI official website
Keyword:

Step 2 Select MISUMI economy series brand
 MiSUMI **MISUMI economy**



Representative model : E-ECTL60-05-S100-BC-P400W-NA-C0

5,648,486 Sold from 1 pc
VND/pc

4,518,789 From 10 pcs
VND/pc

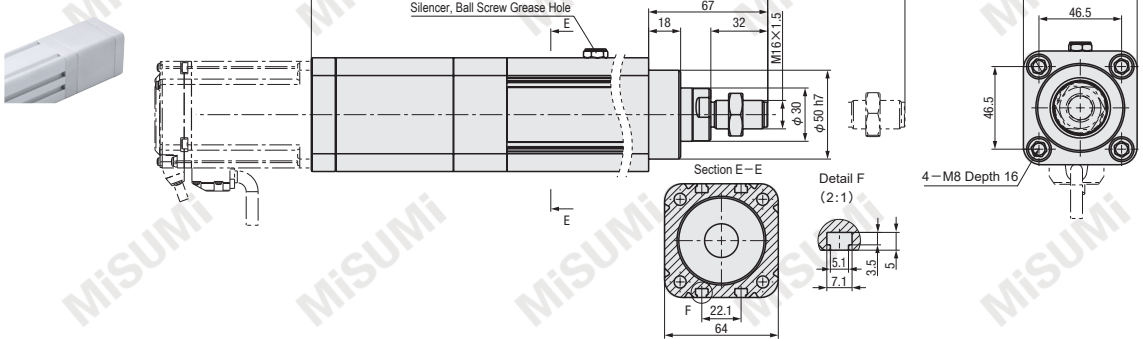
Quantity	Unit Price	Discount	Day To Ship
1	5,648,486	-	15
10	4,518,789	20%	18



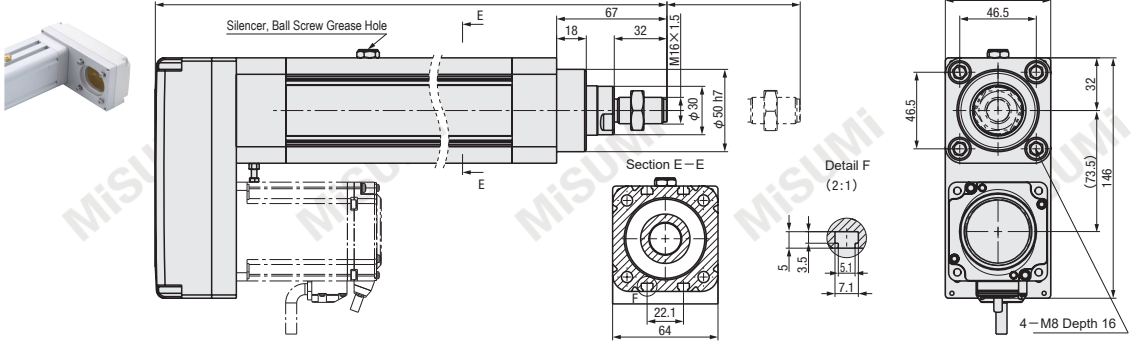
If the desired quantity exceeds the above, please contact us for delivery time.
The actual shipping date is based on the date displayed on the web at the time of ordering.

Components	Main Body	Slide Bush	Push Rod	Motor Bracket
Material	Aluminum Alloy	Aluminum Alloy	S45C	Aluminum Alloy
Surface Treatment	Clear Anodized	-	Chrome Plating	Clear Anodized

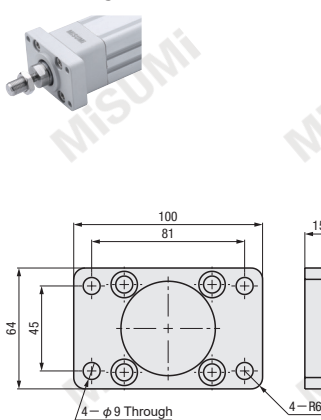
Motor Direct Connection **BC**



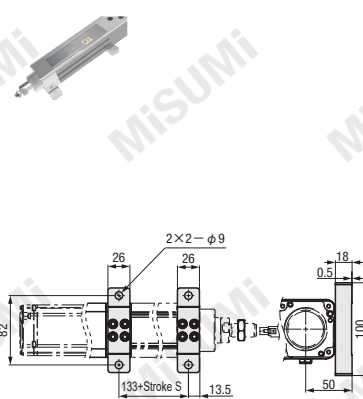
Motor Parallel Connection **RC**



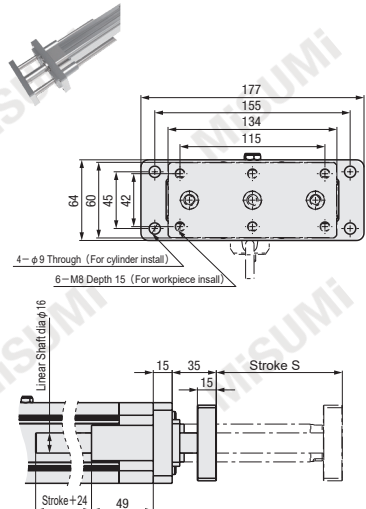
Font Flange **FA**



Horizontal **HA**



With Guide Mechanism **GD**



Model		Stroke S 50mm Increment	Motor Direction	Motor type		Mounting Method	Number of Sensor	Rated Thrust (N)	Max Speed (mm/s) ^{※1}	Max. Payload(kg)		Positioning Repeatability (mm)	Body Width	Ball Screw
Type	Lead (mm)			Brand	Power W					Horizontal	Vertical			
E-ECTL60	05	50~600	BC(Direct connection) RC(Parallel connection)	P(Panasonic) M(Motor table)	400W	NA(Body Mounting) FA(Front Flange) HA(Horizontal) GD(With Guide Mechanism)	C0(Not provided) C1(1 pcs) C2(2 pcs) C3(3 pcs)	1360	250	110	33	□64	Φ16 (C7)	
	10							680	500	88	22			
	20							340	1000	40	8			

※1 Maximum speed is based on a 3000 rpm servo motor. For strokes over 300 mm, reduce speed to prevent resonance.

⚠ Motor not included; customers must purchase separately.

⚠ When the motor code is specified as Z, the motor shaft diameter and installation dimensions must be provided.

⚠ Motor acceleration and deceleration time is recommended to be set at 0.2 seconds or more.

Order

Please follow the selection steps ①~⑦ select the model and parameters to order.

Model(①Type) - ②Lead - ③Strokes S - ④Motor Direction - ⑤Motor type - ⑥Mounting Method - ⑦Number of Sensor
E-ECTL60 - 20 - S300 - RC - Z - HA - C2

E-ECTL60 Stroke S		50	100	150	200	250	300	350	400	450	500	550	600
L	Direct connection	359	409	459	509	559	609	659	709	759	809	859	909
	Parallel connection	328	378	428	478	528	578	628	678	728	778	828	878
Body mass (kg)	Direct connection	3.53	3.99	4.44	4.9	5.35	5.81	6.26	6.72	7.17	7.63	8.08	8.54
	Parallel connection	3.47	3.93	4.38	4.84	5.29	5.75	6.2	6.66	7.11	7.57	8.02	8.48

⚠ When choose GD (Guide mechanism), the total length L is L-17

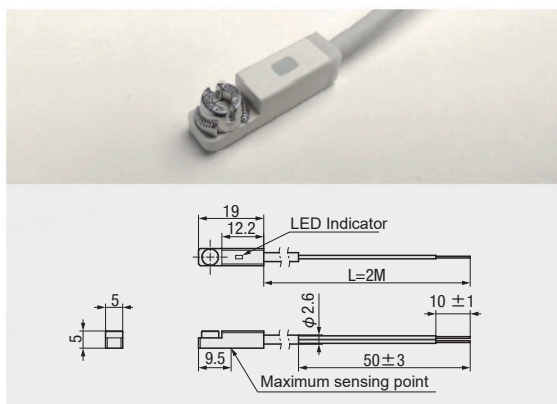
Components

Component name		Type	400W		
Direct connection	Coupling	Clamping tie with Keyway	Outside diameter	Ball screw	Motor side
			Φ40	Φ10	Φ14
Parallel connection	Ball screw pulley	Nickel plated steel	3GT-41Teeth×Φ10		
	Motor pulley		3GT-41Teeth×Φ14		
	Timing belt	Glass fiber core	270-3GT-15		
Sensor (Optional)		DMST-020-2M (DC 2-wire, Normal open)			

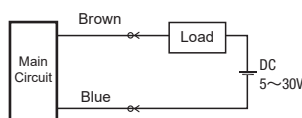
Motor Code and Brand

Code	Brand
P	Panasonic
M	Mitsubishi / Yaskawa / Delta / Siemens Inovance / Xinjie / Leadshine / Omron
Z	Customized

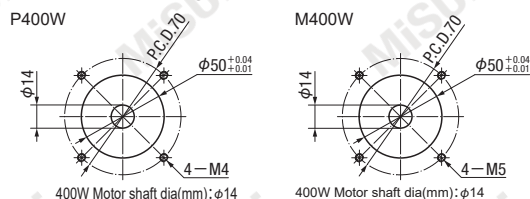
E-ECTL Sensor Specification



Sensor Wiring Diagram



Motor Mounting Hole Dimension



Method 1 Search on MISUMI official website
Type

Method 2 Step 1 Search on MISUMI official website
Keyword

Step 2 Select MISUMI economy series brand
 MISUMI MISUMI economy

Representative model : E-ECTL75-05-S100-BC-P750W-NA-C0

7,210,175 Sold from 1 pc
VND/pc

5,768,140 From 10 pcs
VND/pc



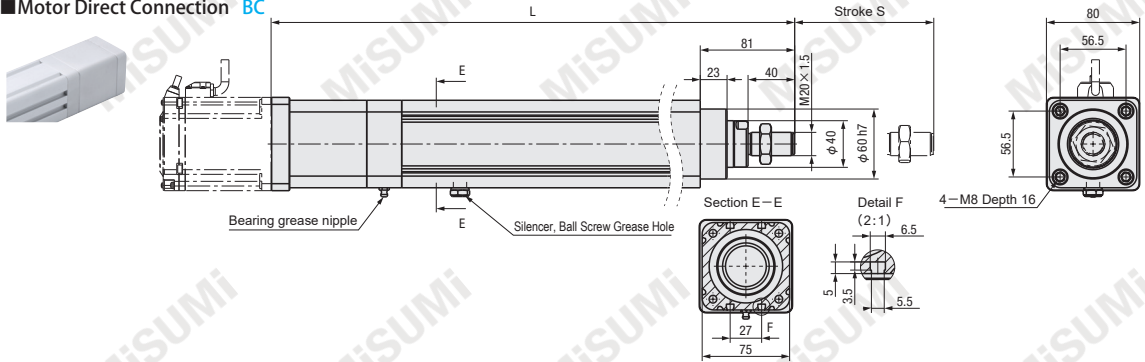
Quantity	Unit Price	Discount	Day To Ship
1	7,210,175	-	15
10	5,768,140	20%	18



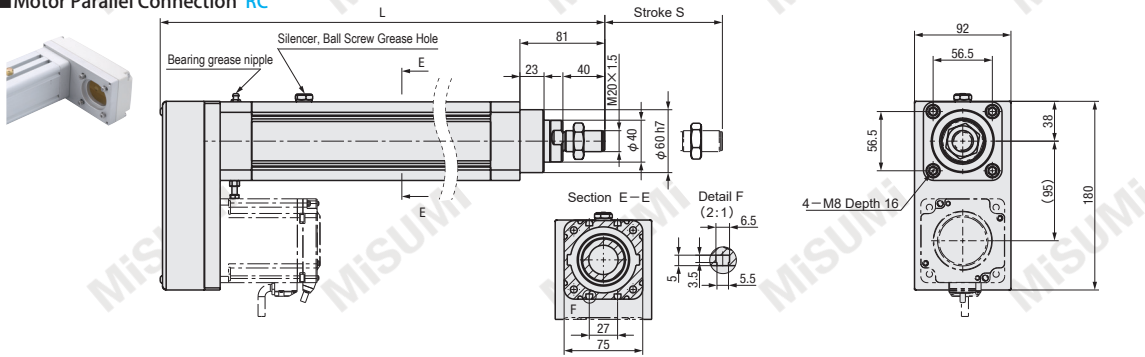
If the desired quantity exceeds the above, please contact us for delivery time.
The actual shipping date is based on the date displayed on the web at the time of ordering.

Components	Main Body	Slide Bush	Push Rod	Motor Bracket
Material	Aluminum Alloy	Aluminum Alloy	S45C	Aluminum Alloy
Surface Treatment	Clear Anodized	-	Chrome Plating	Clear Anodized

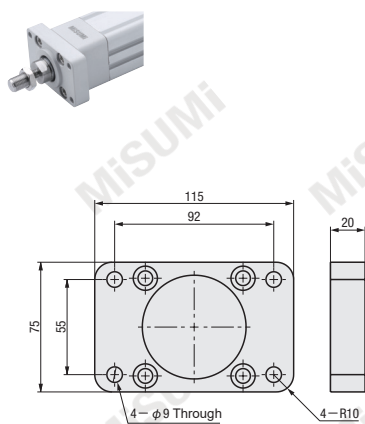
Motor Direct Connection BC



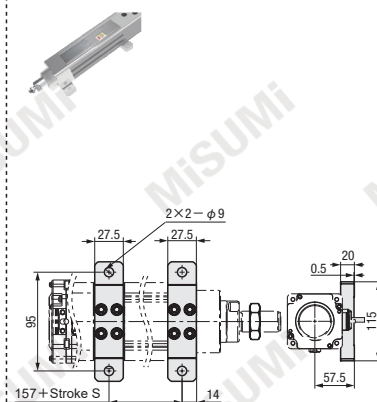
Motor Parallel Connection RC



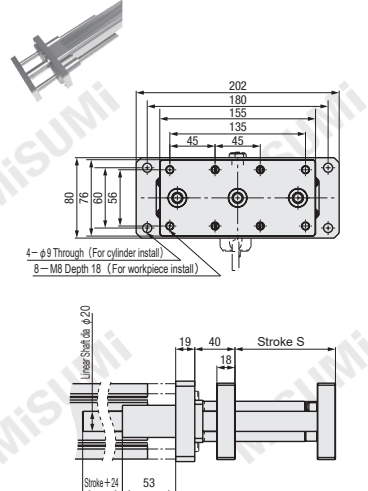
Font Flange FA



Horizontal HA



With Guide Mechanism GD



Model		Stroke S 50mm Increment	Motor Direction	Motor type		Mounting Method	Number of Sensor	Rated Thrust (N)	Max Speed (mm/s) ^{※1}	Max. Payload(kg)		Positioning Repeatability (mm)	Body Width	Ball Screw
Type	Lead (mm)			Brand	Power W					Horizontal	Vertical			
E-ECTL75	05	50~800	BC(Direct connection) RC(Parallel connection)	P(Panasonic) M(Motor table) Z(Customized)	750W	NA(Body Mounting) FA(Front Flange) HA(Horizontal) GD(With Guide Mechanism)	C0(Not provided) C1(1 pcs) C2(2 pcs) C3(3 pcs)	2550	250	200	70	±0.01	□75	Φ20 (C7)
	1270							500	100	35				
	640							1000	50	18				

※1 Maximum speed is based on a 3000 rpm servo motor. For strokes over 300 mm, reduce speed to prevent resonance.

⚠ Motor not included; customers must purchase separately.

⚠ When the motor code is specified as Z, the motor shaft diameter and installation dimensions must be provided.

⚠ Motor acceleration and deceleration time is recommended to be set at 0.2 seconds or more.

Order

Please follow the selection steps ①~⑦ select the model and parameters to order.

Model(①Type) - ②Lead - ③Stroke S - ④Motor Direction - ⑤Motor type - ⑥Mounting Method - ⑦Number of Sensor
 E-ECTL75 - 10 - S400 - BC - M750W - GD - C3

E-ECTL75 Stroke S		50	100	150	200	250	300	350	400	450	500	550	600	650	700	750	800
L	Direct connection	399	449	499	549	599	649	699	749	799	849	899	949	999	1049	1099	1149
	Parallel connection	374	424	474	524	574	624	674	724	774	824	874	924	974	1024	1074	1124
Body mass (kg) (Reference)	Direct connection	5.62	6.26	6.9	7.54	8.18	8.82	9.46	10.1	10.74	11.4	12.02	12.66	13.3	13.94	14.58	15.22
	Parallel connection	5.88	6.52	7.16	7.8	8.44	9.08	9.72	10.36	11	11.64	12.3	12.92	13.56	14.2	14.84	15.48

⚠ When choose GD (Guide mechanism), the total length L is L-22

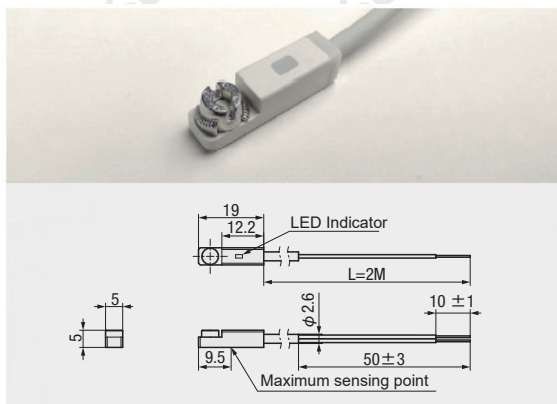
Components

Component name		Type	750W		
Direct connection	Coupling	Clamping tie with Keyway	Outside diameter	Ball screw side	Motor side
			Φ40	Φ12	Φ19
Parallel connection	Ball screw pulley	Nickel plated steel	5GT-30Teeth × Φ12		
	Motor side pulley		5GT-30Teeth × Φ19		
	Timing belt	Glass fiber core rubber	340-5GT-15		
Sensor (Optional)		DMST-020-2M (DC 2-wire, Normal open)			

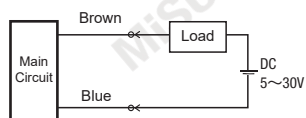
Motor Code and Brand

Code	Brand
P	Panasonic
M	Mitsubishi / Yaskawa / Delta / Siemens Inovance / Xinjie / Leadshine / Omron / HCFA
Z	Customized

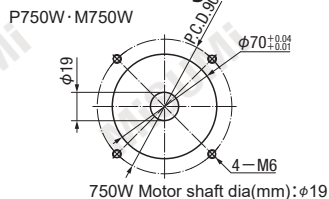
E-ECTL Sensor Specification



Sensor Wiring Diagram



Motor Mounting Hole Dimension



Method 1 Search on MISUMI official website
 Type:

Method 2 Step 1 Search on MISUMI official website
 Keyword:

Step 2 Select MISUMI economy series brand
 MISUMI economy



Representative model : E-ECTL90-10-S100-BC-M1500W-NA-C0

17,842,386 Sold from 1 pc
VND/pc

14,273,909 From 10 pcs
VND/pc

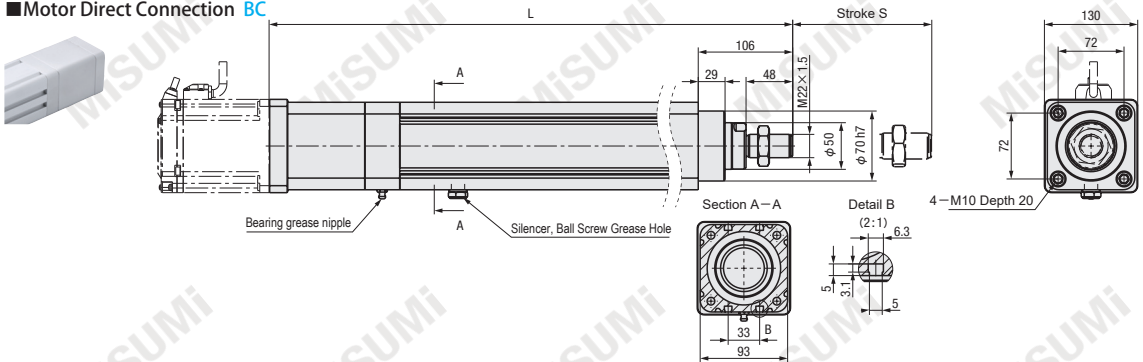
Quantity	Unit Price	Discount	Day To Ship
1	17,842,386	-	15
10	14,273,909	20%	18



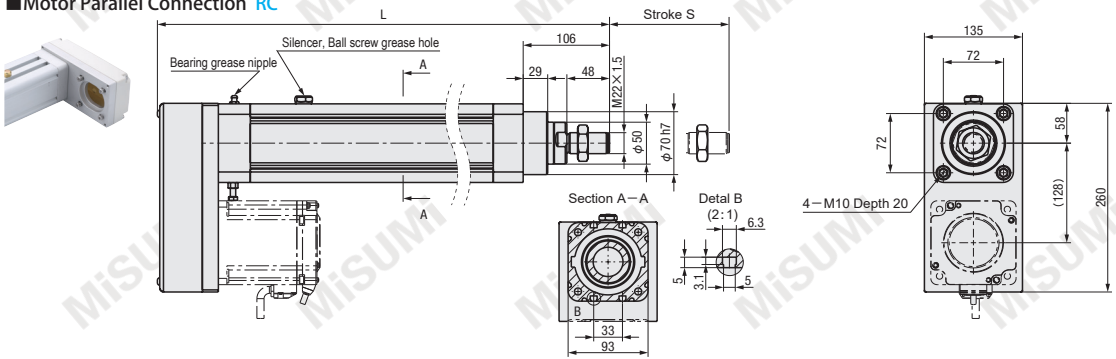
If the desired quantity exceeds the above, please contact us for delivery time.
The actual shipping date is based on the date displayed on the web at the time of ordering.

Components	Main Body	Slide Bush	Push Rod	Motor Bracket
Material	Aluminum Alloy	Aluminum Alloy	S45C	Aluminum Alloy
Surface Treatment	Clear Anodized	-	Chrome Plating	Clear Anodized

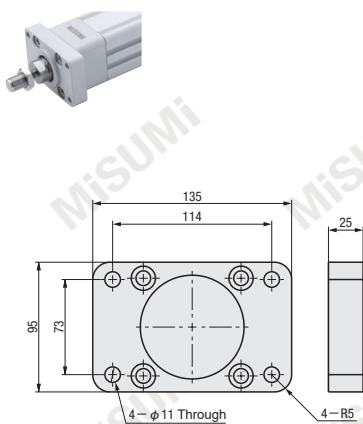
Motor Direct Connection BC



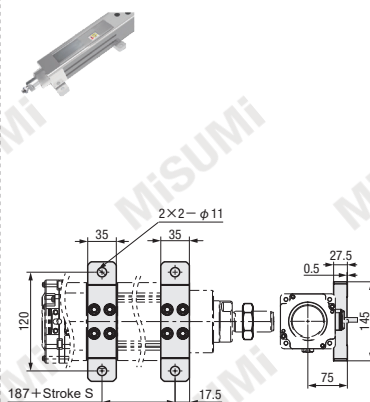
Motor Parallel Connection RC



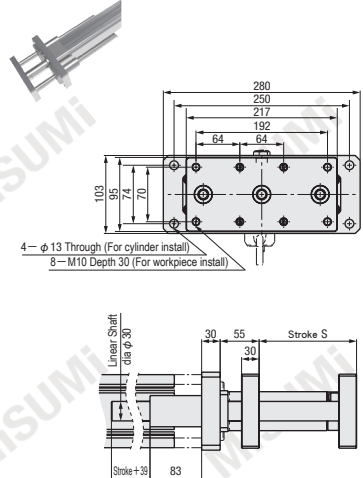
Font Flange FA



Horizontal HA



With Guide Mechanism GD



Model		Stroke S 50mm Increment	Motor Direction	Motor Type		Mounting Method	Number of Sensor	Rated Thrust (N)	Max Speed (mm/s) ^{※1}	Max. Payload(kg)		Positioning Repeatability (mm)	Body Width	Ball Screw
Type	Lead (mm)			Brand	Power W					Horizontal	Vertical			
E-ECTL90	05	50~1000	BC (Direct connection) RC (Parallel connection)	P(Motor table) M(Mitsubishi) ^{※2} Z(Customized)	1000W	NA(Body Mounting) FA(Front Flange) HA(Horizontal) GD(With Guiding Mechanism)	C0(Not Provided) C1(1 pc) C2(2 pcs) C3(3 pcs)	5100	166	405	145	±0.02	□93	Φ32 (C7)
					1500W			7650		608	218			
					2000W			10200		811	291			
	1000W				333			2550	202	72				
	1500W							3825	304	109				
	2000W							5100	405	145				
	10		20	1000W	666	1275	101	36						
				1500W		1912	152	54						
				2000W		2550	202	72						

※1 Max speed is based on a 2000 rpm servo motor; reduce speed if stroke >300 to prevent resonance.

※2 Motor type M applies only to M1000W and M1500W for power above 1000W.

※ Motor not included; customers must purchase separately. When the motor code is specified as Z, the motor shaft diameter and installation dimensions must be provided.

※ Motor acceleration and deceleration time is recommended to be set at 0.2 seconds or more.

Please follow the selection steps ①~⑦ select the model and parameters to order.

Order

Model(①Type) - Lead - Stroke S - Motor Direction - Motor Type - Mounting Method - Number of Sensor
 E-ECTL90 - 10 - S1000 - RC - M1500W - HA - C3

E-ECTL90 Stroke S		50	100	150	200	250	300	350	400	450	500	550	600	650	700	750	800	850	900	950	1000
L	Direct connection	510	560	610	660	710	760	810	860	910	960	1010	1060	1110	1160	1210	1260	1310	1360	1410	1460
	Parallel connection	462	512	562	612	662	712	762	812	862	912	962	1012	1062	1112	1162	1212	1262	1312	1362	1412
Body mass (kg) (Reference)	Direct connection	12	13	14	15	16	17	18	19	20	21	22	23	24	25	26	27	28	29	30	31
	Parallel connection	13	14	15	16	17	18	19	20	21	22	23	24	26	27	28	29	30	31	32	33

※ When choose GD (Guide mechanism), the total length L is L-21

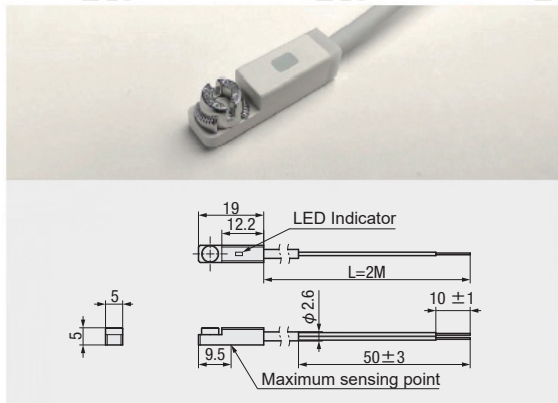
Components

Component name		Type	1000W · 1500W · 2000W		
Direct connection	Coupling	Clamping tie with Keyway	Outside diameter	Ball screw side	Motor side
			Φ55	Φ22	Φ22(MitsubishiΦ24)
Parallel connection	Ball screw pulley	With Keyway	8M-28Teeth × Φ22		
	Motor pulley		8M-28Teeth × Φ22(MitsubishiΦ24)		
	Timing belt	Glass fiber core rubber	480-8M-30		
Sensor (Optional)		DMST-020-2M (DC 2-wire, Normal open)			

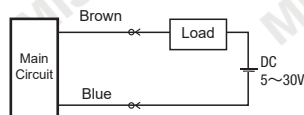
Motor Code and Brand

Code	Brand
P	Panasonic / Delta / HCFA
M	Mitsubishi
Z	Customized

E-ECTL Sensor Specification



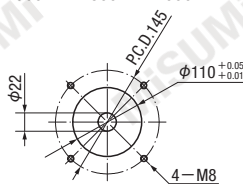
Sensor Wiring Diagram



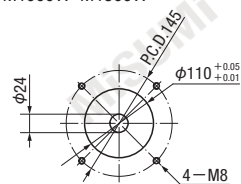
Motor Mounting Hole Dimension

P1000W · P1500W · P2000W

M1000W · M1500W



1000W · 1500W · 2000W
Motor shaft dia(mm): Φ22



1000W · 1500W
Motor shaft dia(mm): Φ24

How to search on website

Method 1 Search on MISUMI official website

Type

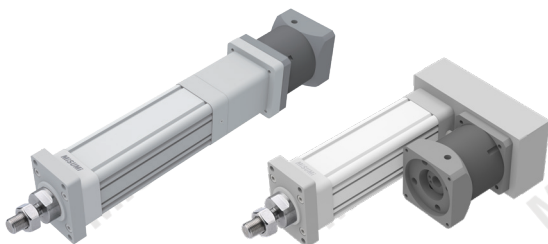
Method 2 Step 1 Search on MISUMI official website

Keyword:

Step 2 Select MISUMI economy series brand

MiSUMI

Representative model : E-ECTLT60-05-S100-BC-RA3-M400W-NA-C0



9,163,561 Sold from 1 pc
VND/pc

7,330,849 From 10 pcs
VND/pc

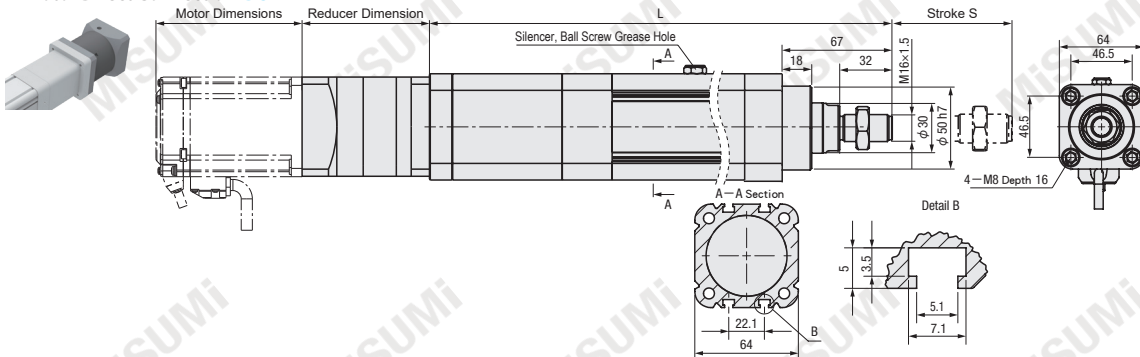
Quantity	Unit Price	Discount	Day To Ship
1	9,163,561	-	15
10	7,330,849	20%	18



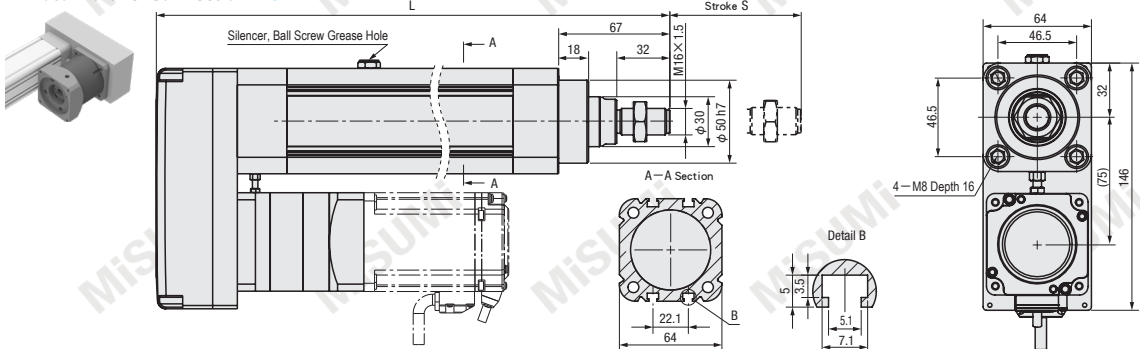
If the desired quantity exceeds the above, please contact us for delivery time.
The actual shipping date is based on the date displayed on the web at the time of ordering.

Components	Main Body	Slide Bush	Push Rod	Motor Bracket
Material	Aluminum Alloy	Aluminum Alloy	S45C	Aluminum Alloy
Surface Treatment	Clear Anodized	-	Chrome Plating	Clear Anodized

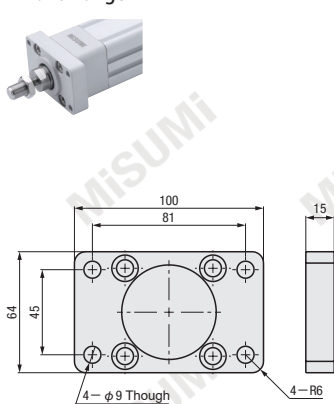
Motor Direct Connection BC



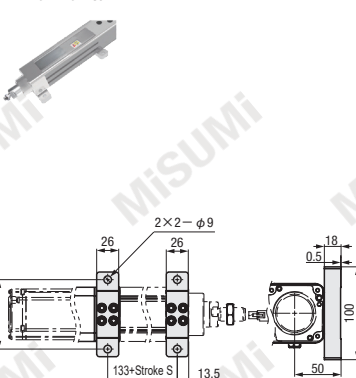
Motor Parallel Connection RC



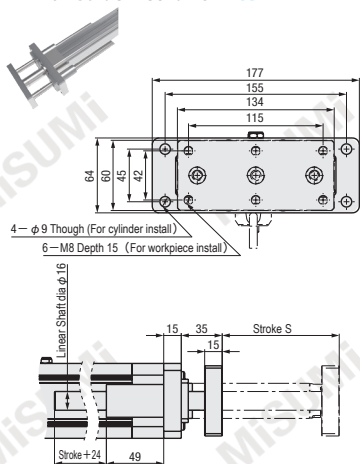
Font Flange FA



Horizontal HA



With Guide Mechanism GD



Model		Stroke S 50mm Increment	Motor Direction	Reducer	Motor Type (No selection required for RA0)		Mounting Method	Number of Sensor	Reduce Ratio	Rated Thrust (N)	Max Speed (mm/s) ^{※1}	Max. Payload(kg)		Positioning Repeatability (mm)	Body Width	Ball Screw
Type	Lead (mm)				Brand	Power W						Horizontal	Vertical			
E-ECLT60	05	50~600	BC (Direct connection) RC (Parallel connection)	RA0 (Not Provided) RA3 (Ratio 3) RA5 (Ratio 5)	P (Panasonic) M (Motor table) Z (Customized)	400W	NA (Body Mounting) FA (Front Flange) HA (Horizontal) GD (With Guiding Mechanism)	C0 (Not Provided) C1 (1 pc) C2 (2 pcs) C3 (3 pcs)	3 : 1	4080	83	324	116	±0.01	□64	Φ16 (C7)
	3 : 1								2040	166	162	58				
	5 : 1								3400	100	270	97				

※1 Max speed is based on a 3000 rpm servo motor; reduce speed if stroke >300 to prevent resonance.

Ⓜ Motor not included; customers must purchase separately. When the motor code is specified as Z, the motor shaft diameter and installation dimensions must be provided.

Ⓜ Motor acceleration and deceleration time is recommended to be set at 0.2 seconds or more.

Please follow the selection steps ①~⑧ select the model and parameters to order.

Order

Model(①Type) - ②Lead - ③Stroke S - ④Motor Direction - ⑤Reducer - ⑥Motor Type - ⑦Mounting Method - ⑧Number of Sensor
 E-ECLT60 - 20 - S600 - RC - RA3 - Z - HA - C2

E-ECLT60 Stroke S		50	100	150	200	250	300	350	400	450	500	550	600
L	Direct connection	359	409	459	509	559	609	659	709	759	809	859	909
	Parallel connection	329	379	429	479	529	579	629	679	729	779	829	879
Body mass (kg)	Direct connection	4	4	4	5	5	6	6	7	7	8	8	9
	Parallel connection	4	4	5	5	6	6	6	7	7	8	8	9
(Reference)	Reduce ratio	1.1											

Ⓜ When choose GD (Guide mechanism), the total length L is L-17

Components

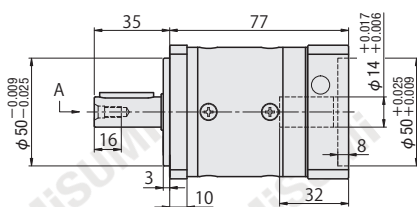
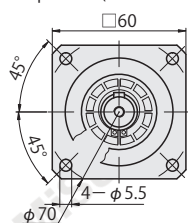
Component name	Type	400W			
Direct connection	Coupling	Clamping tie with Keyway	Outside diameter	Ball screw side	Motor side
			Φ40	Φ10	Φ14
Parallel connection	Ball screw pulley	With Keyway Black Oxide Steel	5GT-25Teeth × Φ12		
	Motor pulley	With Keyway, Nickel Plating Steel	5GT-25Teeth × Φ14		
	Timing belt	Glass fiber core rubber	275-5GT-15		
Sensor (Optional)		DMST-020-2M (DC 2-wire, Normal open)			

Motor Code and Brand

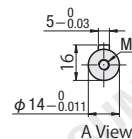
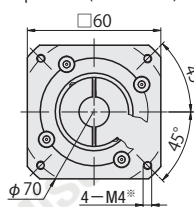
Code	Brand
P	Panasonic
M	Mitsubishi / Yaskawa / Delta / Siemens Inovance / Xinjie / Leadshine / Omron/ HCFA
Z	Customized

Reducer Dimensional Drawing

Output End (Ball Screw End)

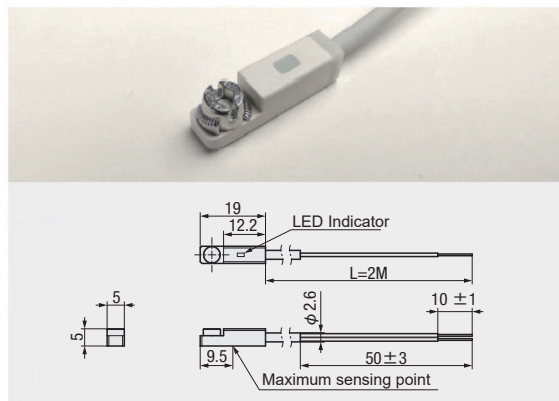


Input End (Motor End)

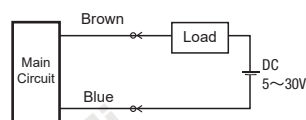


※ When motor code is specified as M, the threaded size are 4-M5

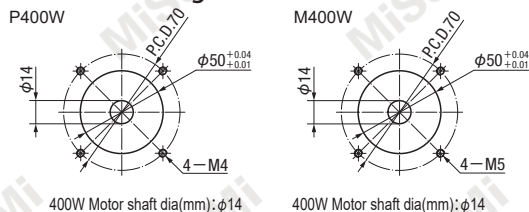
E-ECLT Sensor Specification



Sensor Wiring Diagram



Motor Mounting Hole Dimension



How to search on website

Method 1 Search on MISUMI official website

Type

Method 2 Step 1 Search on MISUMI official website

Keyword

Step 2 Select MISUMI economy series brand

MiSUMI economy



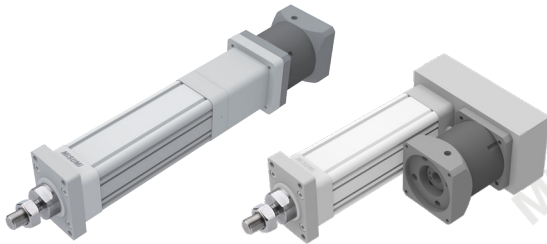
Representative model : E-ECLTL75-05-S100-BC-RA3-M750W-NA-C0

13,008,243

10,406,594

Sold from 1 pc
VND/pc

From 10 pcs
VND/pc



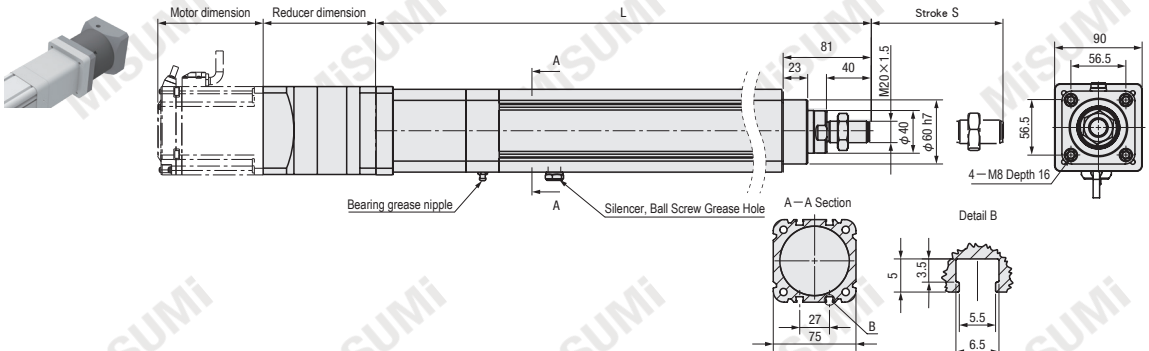
Quantity	Unit Price	Discount	Day To Ship
1	13,008,243	-	15
10	10,406,594	20%	18



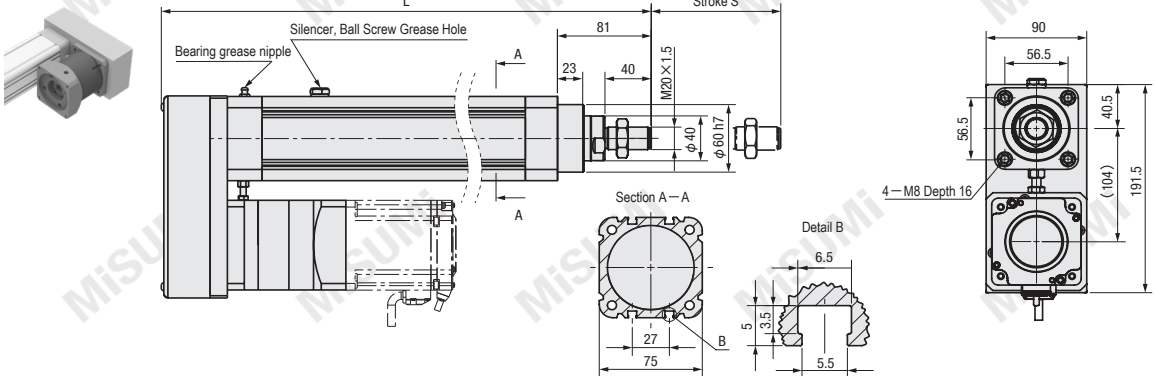
If the desired quantity exceeds the above, please contact us for delivery time.
The actual shipping date is based on the date displayed on the web at the time of ordering.

Components	Main Body	Slide Bush	Push Rod	Motor Bracket
Material	Aluminum Alloy	Aluminum Alloy	S45C	Aluminum Alloy
Surface Treatment	Clear Anodized	-	Chrome Plating	Clear Anodized

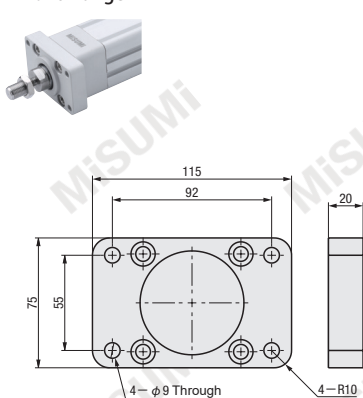
Motor Direct Connection BC



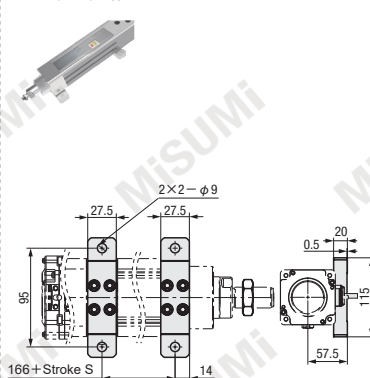
Motor Parallel Connection RC



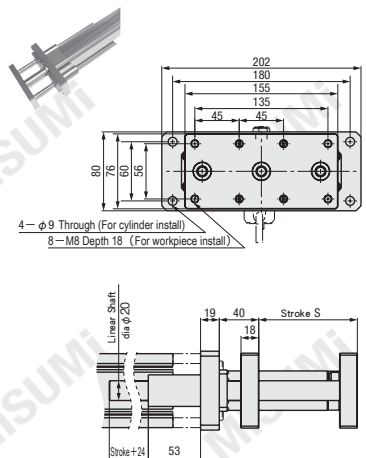
Font Flange FA



Horizontal HA



With Guide Mechanism GD



Model		Stroke S 50mm Increment	Motor Direction	Reducer	Motor Type (No selection required for RAO)		Mounting Method	Number of Sensor	Reduce Ratio	Rated Thrust (N)	Max Speed (mm/s) ^{※1}	Max. Payload(kg)		Positioning Repeatability (mm)	Body Width	Ball Screw
Type	Lead (mm)				Brand	Power W						Horizontal	Vertical			
E-ECTL75	05	50~800	BC (Direct connection) RC (Parallel connection)	RA0 (Not Provided) RA3 (Ratio 3) RA5 (Ratio 5)	P (Panasonic) M (Motor table) Z (Customized)	750W	NA (Body Mounting) FA (Front Flange) HA (Horizontal) GD (With Guiding Mechanism)	C0 (Not Provided) C1(1 pc) C2(2 pcs) C3(3 pcs)	3 : 1	7650	83	608	218	±0.01	□75	Φ20 (C7)
	10								3 : 1	3825	166	304	109			
	10								5 : 1	6375	100	507	182			
	20								3 : 1	1912	333	152	54			
								5 : 1	3187	200	253	91				

※1 Max speed is based on a 3000 rpm servo motor; reduce speed if stroke >300 to prevent resonance.

Ⓜ Motor not included; customers must purchase separately. When the motor code is specified as Z, the motor shaft diameter and installation dimensions must be provided.

Ⓜ Motor acceleration and deceleration time is recommended to be set at 0.2 seconds or more.

Order

Please follow the selection steps ①~⑧ select the model and parameters to order.

Model(①Type) - Lead - Stroke S - Motor Direction - Reducer - Motor Type - Mounting Method - Number of Sensor
 E-ECTL75 - 10 - S800 - BC - RA3 - M750W - GD - C3

E-ECTL75 Stroke S		50	100	150	200	250	300	350	400	450	500	550	600	650	700	750	800
L	Direct connection	430	480	530	580	630	680	730	780	830	880	930	980	1030	1080	1130	1180
	Parallel connection	404	454	504	554	604	654	704	754	804	854	904	954	1004	1054	1104	1154
Body mass (kg)	Direct connection	7	8	9	9	10	11	11	12	12	13	14	14	15	16	16	17
	Parallel connection	9	9	10	11	11	12	13	13	14	15	15	16	17	17	18	18
(Reference)	Reducer	3.2															

Ⓜ When choose GD (Guide mechanism), the total length L is L-22

Components

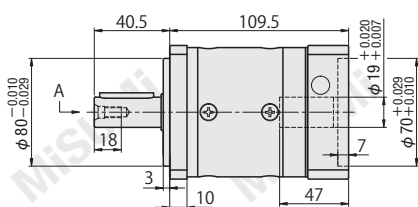
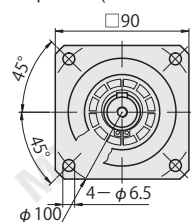
Component name		Type	750W		
Direct connection	Coupling	Clamping tie with Keyway	Outside diameter	Ball screw side	Motor side
			Φ40	Φ18	Φ20
Parallel connection	Ball screw pulley	with Keyway	8YU-26Teeth × Φ18		
	Motor pulley	Nickel plated steel	8YU-26Teeth × Φ20		
	Timing belt	Glass fiber core rubber	416-8YU-25		
Sensor (Optional)		DMST-020-2M (DC 2-wire, Normal open)			

Motor Code and Brand

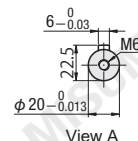
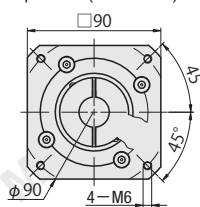
Code	Brand
P	Panasonic
M	Mitsubishi / Yaskawa / Delta / Siemens Inovance / Xinjie / Leadshine / Omron / HCFA
Z	Customized

Reducer Dimensional Drawing

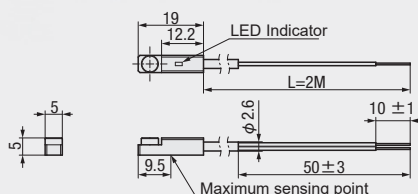
Output End (Ball Screw End)



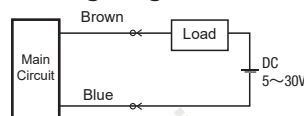
Input End (Motor End)



E-ECTL Sensor Specification

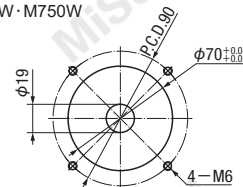


Sensor Wiring Diagram



Motor Mounting Hole Dimension

P750W · M750W



750W Motor shaft dia(mm): φ19

How to search on website

Method 1 Search on MISUMI official website

Type:

Method 2 Step 1 Search on MISUMI official website

Keyword:

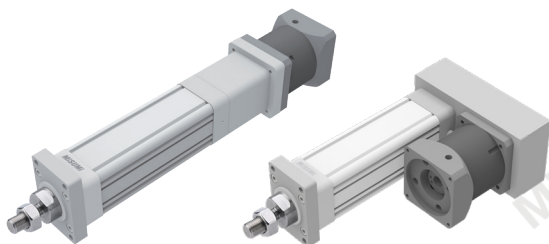
Step 2 Select MISUMI economy series brand

MISUMI MISUMI economy

Representative model : E-ECLTL90-05-S100-BC-RA3-M1500W-FA-C0

29,117,994 Sold from 1 pc
VND/pc

23,294,395 From 10 pcs
VND/pc



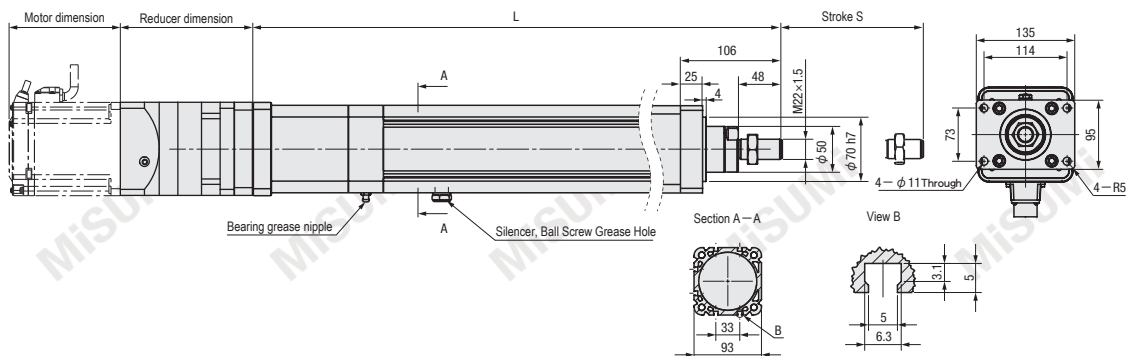
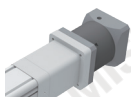
Quantity	Unit Price	Discount	Day To Ship
1	29,117,994	-	15
10	23,294,395	20%	18



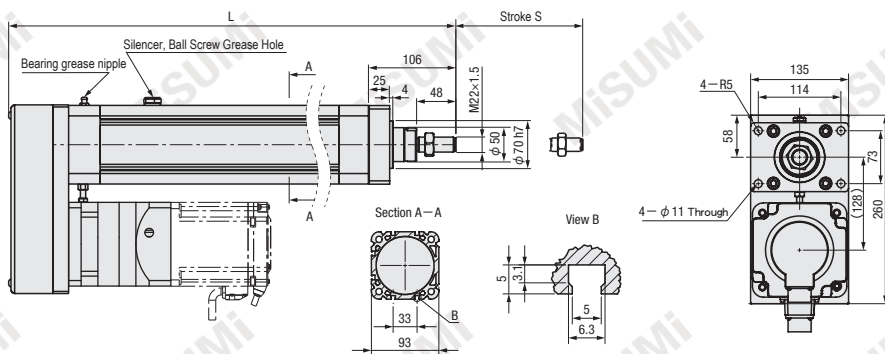
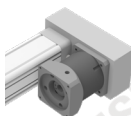
If the desired quantity exceeds the above, please contact us for delivery time.
The actual shipping date is based on the date displayed on the web at the time of ordering.

Components	Main Body	Slide Bush	Push Rod	Motor Bracket
Material	Aluminum Alloy	Aluminum Alloy	S45C	Aluminum Alloy
Surface Treatment	Clear Anodized	-	Chrome Plating	Clear Anodized

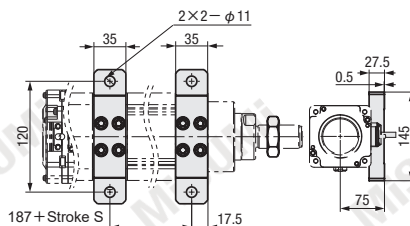
Motor Direct Connection BC



Motor Parallel Connection RC



Horizontal HA



Model		Stroke S 50mm Increment	Motor Direction	Reducer	Motor Type (No selection required for RA0)		Mounting Method	Number of Sensor	Reduce Ratio	Rated Thrust (N)	Max Speed (mm/s) ^{※1}	Max. Payload(kg)		Positioning Repeatability (mm)	Body Width	Ball Screw
Type	Lead (mm)				Brand	Power W						Horizontal	Vertical			
E-ECLT90	05	50~1000	BC (Direct connection) RC (Parallel connection)	RA0 (Not Provided) RA3 (Ratio 3) RA5 (Ratio 5)	P(Motor table) M(Mitsubishi) ^{※2} Z(Customized)	1000W	FA (Front Flange) HA (Horizontal)	C0 (Not Provided) C1 (1 pc) C2 (2 pcs) C3 (3 pcs)	3 : 1	15301	55	1217	437	±0.02	□93	Φ32 (C7)
	3 : 1								7650	111	608	218				
	5 : 1								12750	66	1014	364				
	3 : 1								11475	111	913	327				
5 : 1	19126	66	1522	546												
3 : 1	3825	222	304	109												
5 : 1	6375	133	507	182												
3 : 1	5737	222	456	163												
5 : 1	9563	133	761	273												

- ※1 Maximum speed is based on a 3000 rpm servo motor. For strokes over 300 mm, reduce speed to prevent resonance.
- ※2 Motor type M applies only to M1000W and M1500W for power above 1000W
- ① Motor not included; customers must purchase separately.
- ② When the motor code is specified as Z, the motor shaft diameter and installation dimensions must be provided.
- ③ Motor acceleration and deceleration time is recommended to be set at 0.2 seconds or more.

Order Please follow the selection steps ①~⑧ select the model and parameters to order.

Model(①Type) - ②Lead - ③Stroke S - ④Motor Direction - ⑤Reducer - ⑥Motor Type - ⑦Mounting Method - ⑧Number of Sensor

E-ECLT90 - 10 - S400 - RC - RA5 - P1500W - HA - C3

E-ECLT90 Stroke S		50	100	150	200	250	300	350	400	450	500	550	600	650	700	750	800	850	900	950	1000
L	Direct connection	510	560	610	660	710	760	810	860	910	960	1010	1060	1110	1160	1210	1260	1310	1360	1410	1460
	Parallel connection	462	512	562	612	662	712	762	812	862	912	962	1012	1062	1112	1162	1212	1262	1312	1362	1412
Body mass (kg) (Reference)	Direct connection	13	14	15	16	17	18	19	20	21	22	23	25	26	27	28	29	30	31	32	33
	Parallel connection	15	16	17	18	19	20	21	22	23	24	25	26	27	28	29	30	31	32	33	34
Reducer		7																			

④ When choose GD (Guide mechanism), the total length L is L-21

Components

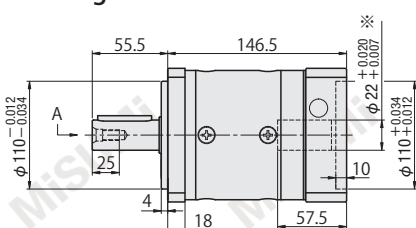
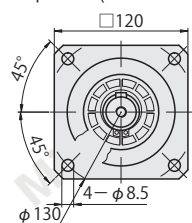
Component name		Type	1000W · 1500W		
Direct connection	Coupling	Clamping tyte with Keyway	Outside diameter	Ball screw side	Motor side
			Φ55	Φ22	Φ25
Parallel connection	Ball screw pulley	With Keyway	8M-28Teeth × Φ22		
	Motor pulley	Nickel Plating Steel	8M-28Teeth × Φ25		
	Timing belt	Glass fiber core rubber	480-8M-30		
Sensor (Optional)		DMST-020-2M (DC 2-wire, Normal open)			

Motor Code and Brand

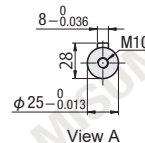
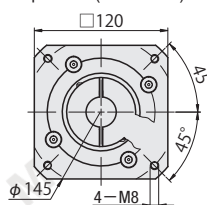
Code	Brand
P	Panasonic / Delta / HCFA
M	Mitsubishi
Z	Customized

Reducer Dimensional Drawing

Output End (Ball Screw End)

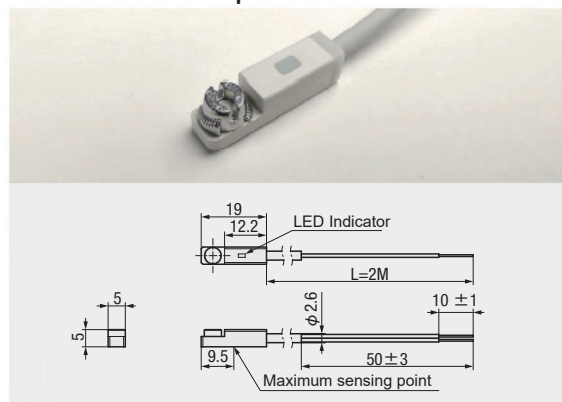


Input End (Motor End)

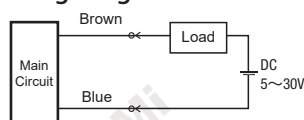


※ For motor code M, bore diameter is Φ24

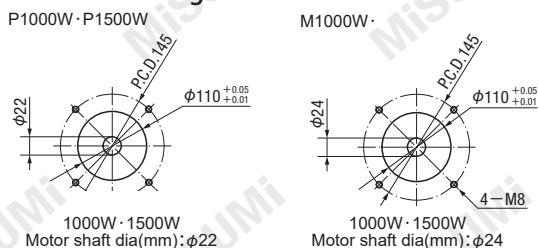
E-ECLT Sensor Specification



Sensor Wiring Diagram



Motor Mounting Hole Dimension



How to search on website

Method 1 Search on MISUMI official website

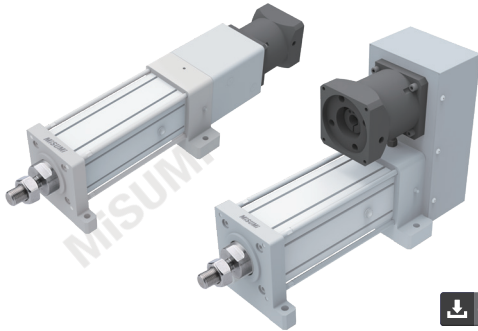
Type **E-ECLT90**

Method 2 Step 1 Search on MISUMI official website

Keyword **Electric Cylinder**

Step 2 Select MISUMI economy series brand

MISUMI **economy**



Representative model : E-ECLTL110-20-S100-BC-RA3-P2000W-FA-C0

45,207,512 Sold from 1 pc
VND/pc

36,166,010 From 10 pcs
VND/pc

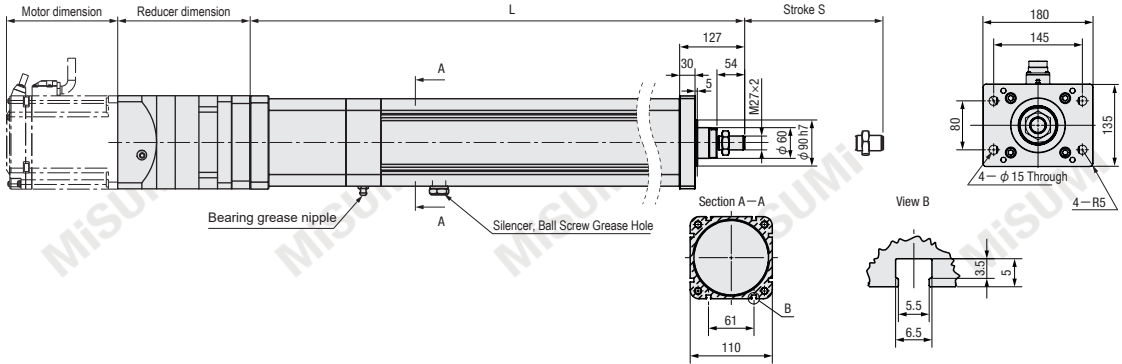
Quantity	Unit Price	Discount	Day To Ship
1	45,207,512	-	15
10	36,166,010	20%	18



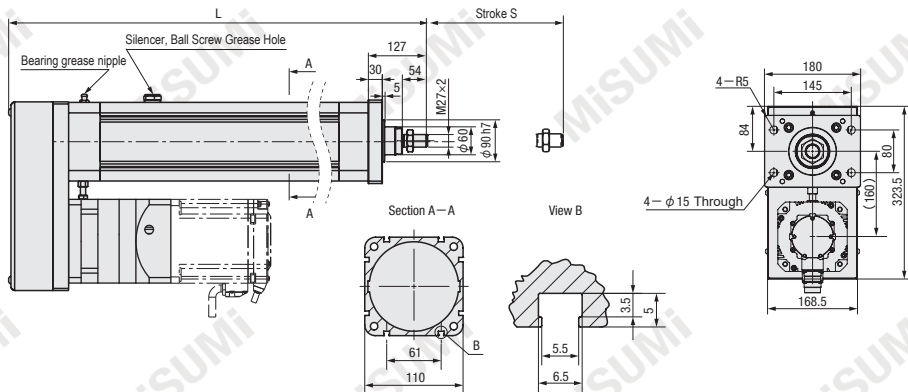
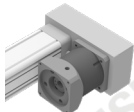
⚠ If the desired quantity exceeds the above, please contact us for delivery time.
The actual shipping date is based on the date displayed on the web at the time of ordering.

Components	Main Body	Slide Bush	Push Rod	Motor Bracket
Material	Aluminum Alloy	Aluminum Alloy	S45C	Steel
Surface Treatment	Clear Anodized	-	Chrome Plating	Nickel Plated

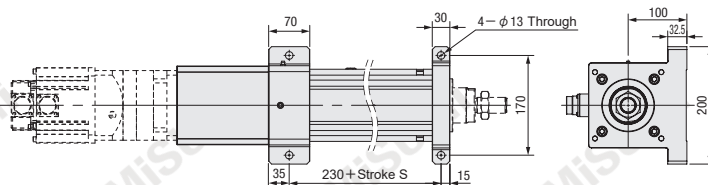
Motor Direct Connection BC



Motor Parallel Connection RC



Horizontal HA



Model		3 Stroke S	4 Motor Direction	5 Reducer	6 Motor Type (No selection required for RA0)		7 Mounting Method	8 Number of Sensor	Reduce Ratio	Rated Thrust (N)	Max Speed (mm/s) ^{※1}	Max. Payload(kg)		Positioning Repeatability (mm)	Body Width	Ball Screw
1 Type	2 Lead (mm)	50mm Increment			Brand	Power W						Horizontal	Vertical			
E-ECTL110	10	50~1000	BC (Direct connection) RC (Parallel connection)	RA0 (Not Provided) RA3 (Ratio 3) RA5 (Ratio 5)	P (Motor table) Z (Customized)	2000W	FA (Front Flange) HA (Horizontal)	C0 (Not Provided)	3 : 1	15301	111	1217	437	±0.02	□110	Φ40 (C7)
								C1 (1 pc)	5 : 1	25501	66	2029	728			
	C2 (2 pcs)							3 : 1	7650	222	608	218				
	C3 (3 pcs)							5 : 1	12750	133	1014	364				

※1 Max speed is based on a 3000 rpm servo motor; reduce speed if stroke >300 to prevent resonance.

⚠ Motor not included; customers must purchase separately. When the motor code is specified as Z, the motor shaft diameter and installation dimensions must be provided.

⚠ Motor acceleration and deceleration time is recommended to be set at 0.2 seconds or more.

Order

Please follow the selection steps ①~⑧ select the model and parameters to order.

Model(① Type) - ② Lead - ③ Stroke S - ④ Motor Direction - ⑤ Reducer - ⑥ Motor Type - ⑦ Mounting Method - ⑧ Number of Sensor
 E-ECTL110 - 10 - 5400 - RC - RA0 - P2000W - HA - C3

E-ECTL110 Stroke S		50	100	150	200	250	300	350	400	450	500	550	600	650	700	750	800	850	900	950	1000
L	Direct connection	590	640	690	740	790	840	890	940	990	1040	1090	1140	1190	1240	1290	1340	1390	1440	1490	1540
	Parallel connection	542	592	642	692	742	792	842	892	942	992	1042	1092	1142	1192	1242	1292	1342	1392	1442	1492
Body mass (kg) (Reference)	Direct connection	32	34	35	37	38	40	41	43	44	46	47	49	50	52	53	55	56	58	59	61
	Parallel connection	45	47	48	50	51	53	54	56	57	59	60	62	63	65	66	68	69	71	72	74
Reducer		7																			

Components

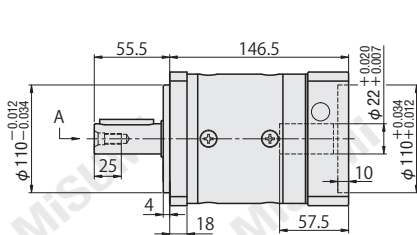
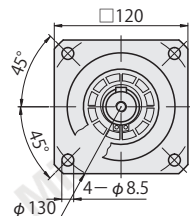
Component name		Type	2000W		
Direct connection	Coupling	Clamping tie with Keyway	Outside diameter	Ball screw side	Motor side
			Φ80	Φ32	Φ25
Parallel connection	Ball screw pulley	With Keyway	8M-40Teeth × Φ32		
	Motor pulley	Nickel Plating Steel	8M-40Teeth × Φ25		
	Timing belt	Glass fiber core rubber	640-8M-50		
Sensor (Optional)		DMST-020-2M (DC 2-wire, Normal open)			

Motor Code and Brand

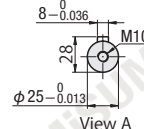
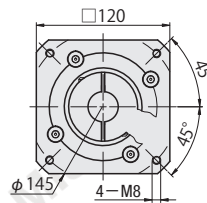
Code	Brand
P	Panasonic / Delta / HCFA
Z	Customized

Reducer Dimensional Drawing

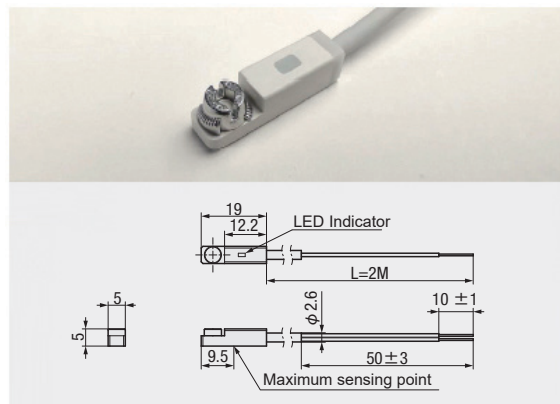
Output End (Ball Screw End)



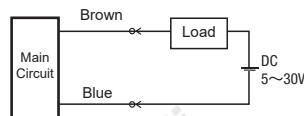
Input End (Motor End)



E-ECTL Sensor Specification

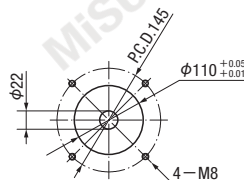


Sensor Wiring Diagram



Motor Mounting Hole Dimension

P2000W



2000W Motor shaft dia(mm): φ22



Method 1 Search on MISUMI official website
 Type:

Method 2 Step 1 Search on MISUMI official website
 Keyword:

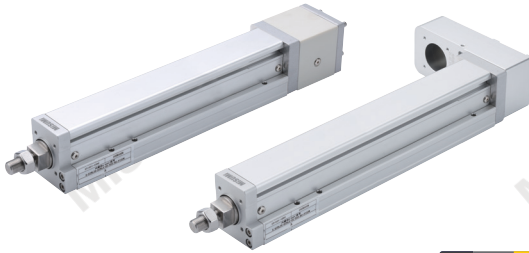
Step 2 Select MISUMI economy series brand
 MISUMI MISUMI economy

Representative model : E-ECRL5-05-S100-BC-P100W-C0

7,771,409
6,217,127

Sold from 1 pc
VND/pc

From 10 pcs
VND/pc



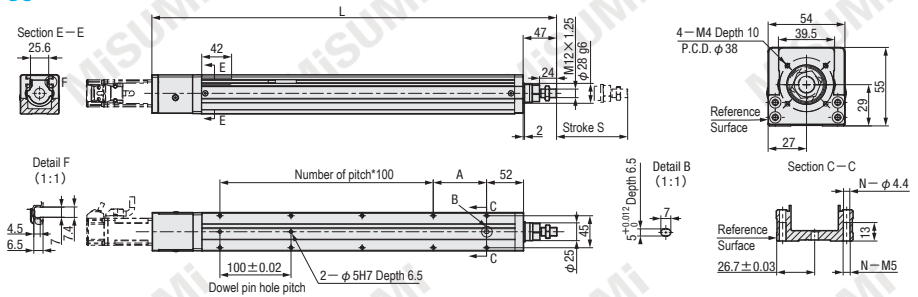
Quantity	Unit Price	Discount	Day To Ship
1	7,771,409	-	15
10	6,217,127	20%	18



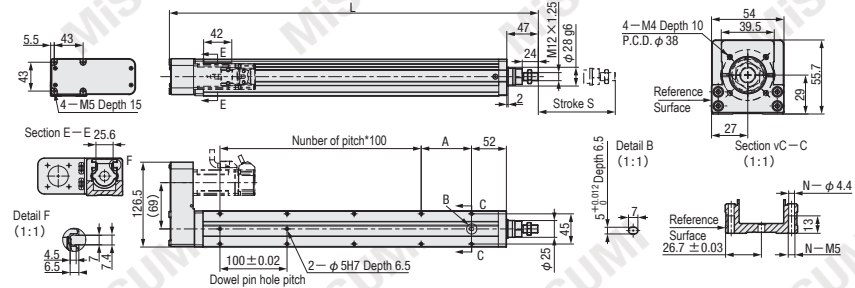
If the desired quantity exceeds the above, please contact us for delivery time.
The actual shipping date is based on the date displayed on the web at the time of ordering.

Components	Main Body	Built-in Linear Guide	Slide Block	Push Rod	Motor Bracket
Material	Aluminum Alloy	Stainless Steel	Aluminum Alloy	S45C	Aluminum Alloy
Surface Treatment	Clear Anodized	-	Clear Anodized	Chrome Plating	Clear Anodized

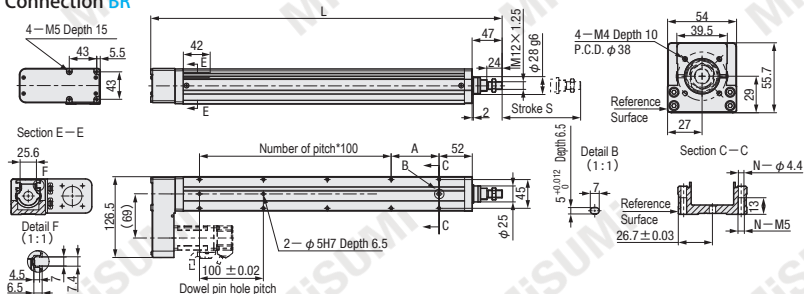
Motor Direct Connection BC



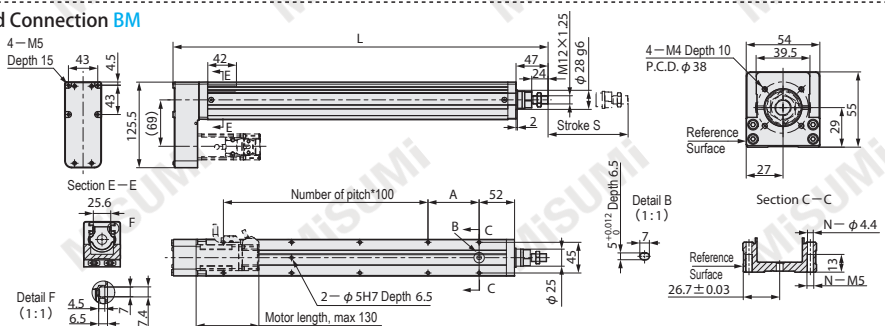
Motor Parallel Left Fold Connection BL



Motor Parallel Right Fold Connection BR



Motor Parallel Down Fold Connection BM



Model		3 Stroke S 50mm Increment	4 Motor Direction	5 Motor Type		6 Number of Sensor	Rated Thrust (N)	Max Speed (mm/s) ^{※1}	Max. Payload(kg)		Positioning Repeatability (mm)	Body Width	Ball Screw
1 Type	2 Lead (mm)			Brand	Power W				Horizontal	Vertical			
E-ECRL5	05	50~600	BC(Direct connection) BL(Parallel Left Fold) BR(Parallel Right Fold) BM(Parallel Down Fold)	P(Panasonic) M(Motor table) Z(Customized)	100W	C0(Not Provided) C1(1 pc) C2(2 pcs) C3(3 pcs)	340	250	30	10	±0.01	54×55	Φ12 (C7)
	10						170	500	15	5			
	20						85	1000	10	2.5			

※1 Max speed is based on a 3000 rpm servo motor; reduce speed if stroke >300 to prevent resonance.

Ⓜ Motor not included; customers must purchase separately. When the motor code is specified as Z, the motor shaft diameter and installation dimensions must be provided.

Ⓜ Motor acceleration and deceleration time is recommended to be set at 0.2 seconds or more.

Order

Please follow the selection steps ①~⑥ select the model and parameters to order.

Model(①Type) - ②Lead - ③Stroke S - ④Motor Direction - ⑤Motor Type - ⑥Number of Sensor
 E-ECRL5 - 05 - S100 - BM - P100W - C0

E-ECRL5 Stroke S		50	100	150	200	250	300	350	400	450	500	550	600
L	Direct connection	319	369	419	469	519	569	619	669	719	769	819	869
	Parallel connection	300	350	400	450	500	550	600	650	700	750	800	850
Mounting Dimension	A	25	75	25	75	25	75	25	75	25	75	25	75
	Number of Pitch [※]	1	1	2	2	3	3	4	4	5	5	6	6
	Number of Hole N [※]	6	6	8	8	10	10	12	12	14	14	16	16
Main Body Mass(kg)	Direct connection	1.71	1.98	2.24	2.50	2.77	3.03	3.30	3.56	3.82	4.09	4.35	4.61
	Parallel connection	1.99	2.25	2.52	2.78	3.04	3.30	3.56	3.83	4.09	4.35	4.61	4.87

※ For parallel down fold installation, mounting holes decrease by 2, and pitch number by 1 due to motor interference.

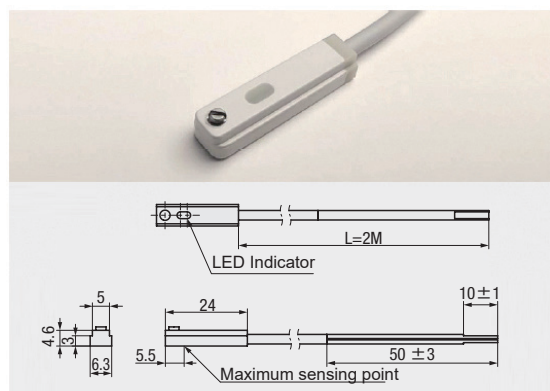
Components

Component name		Type	100W		
Direct connection	Coupling	Disk Coupling Clamp Type	Outside diameter	Ball screw side	Motor side
			Φ26	Φ7	Φ8
Parallel connection	Ball screw pulley	Nickel Plating Steel	2GT-40Teeth × Φ7		
	Motor pulley		2GT-40Teeth × Φ8		
	Timing belt	Glass fiber core rubber	220-2GT-12		
Sensor (Optional)		DMSE-020-2M (DC 2-wire, Normal open)			

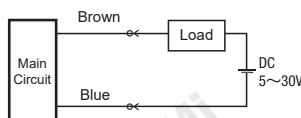
Motor Code and Brand

Code	Brand
P	Panasonic
M	Mitsubishi / Yaskawa / Delta / Siemens Inovance / Xinjie / Leadshine / Omron / HCFA
Z	Customized

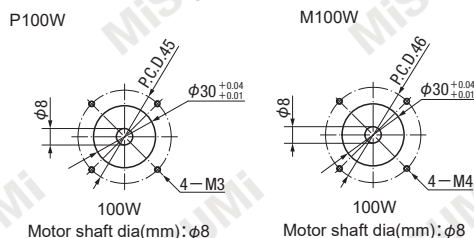
E-ECRL Sensor Specification



Sensor Wiring Diagram



Motor Mounting Hole Dimension



How to search on website

Method 1 Search on MISUMI official website

Type

Method 2 Step 1 Search on MISUMI official website

Keyword

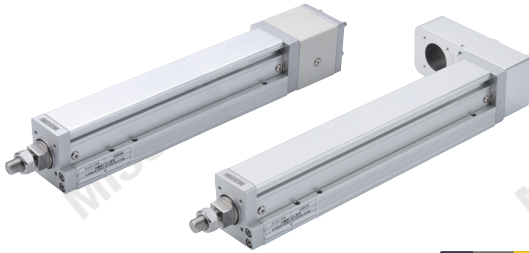
Step 2 Select MISUMI economy series brand

MISUMI MISUMI economy

Representative model : E-ECRL8-05-S100-BC-P200W-C0

9,149,339 Sold from 1 pc
VND/pc

7,319,471 From 10 pcs
VND/pc



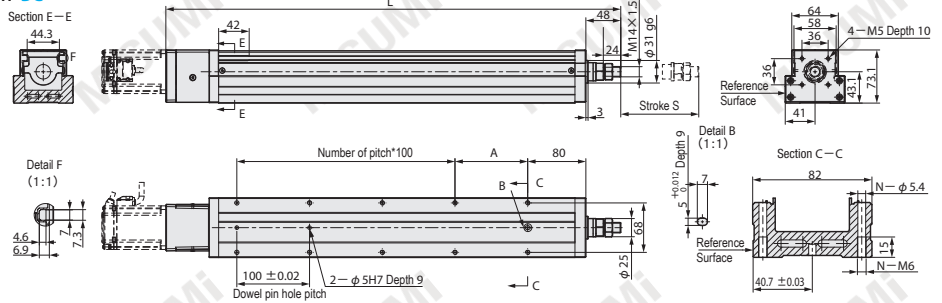
Quantity	Unit Price	Discount	Day To Ship
1	9,149,339	-	15
10	7,319,471	20%	18



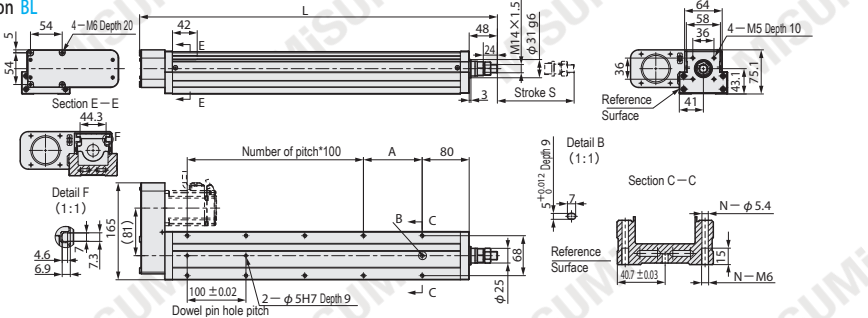
If the desired quantity exceeds the above, please contact us for delivery time.
The actual shipping date is based on the date displayed on the web at the time of ordering.

Components	Main Body	Built-in Linear Guide	Slide Block	Push Rod	Motor Bracket
Material	Aluminum Alloy	Stainless Steel	Aluminum Alloy	S45C	Aluminum Alloy
Surface Treatment	Clear Anodized	-	Clear Anodized	Chrome Plating	Clear Anodized

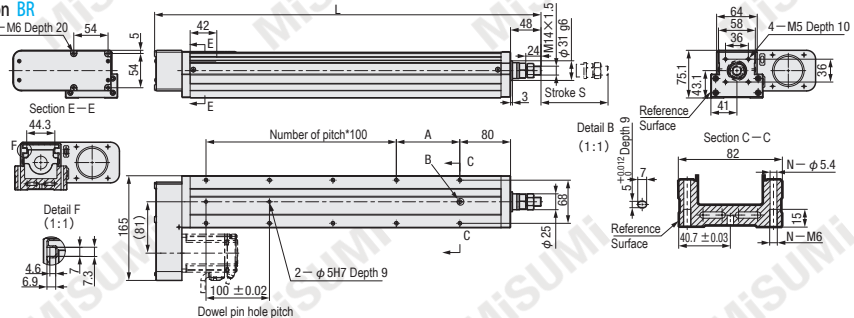
Motor Direct Connection BC



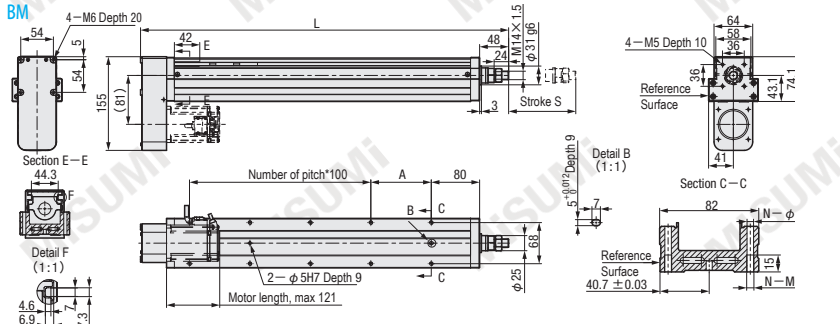
Motor Parallel Left Fold Connection BL



Motor Parallel Right Fold Connection BR



Motor Parallel Down Fold Connection BM



Model		Stroke S 50mm Increment	Motor Direction	Motor Type		Number of Sensor	Rated Thrust (N)	Max Speed (mm/s) ^{※1}	Max. Payload(kg)		Positioning Repeatability (mm)	Body Width	Ball Screw
Type	Lead (mm)			Brand	Power W				Horizontal	Vertical			
E-ECRL8	05	50~800	BC(Direct connection) BL(Parallel Left Fold) BR(Parallel Right Fold) BM(Parallel Down Fold)	P(Panasonic) M(Motor table) Z(Customized)	200W	C0(Not Provided) C1(1 pc) C2(2 pcs) C3(3 pcs)	683	250	50	15	±0.01	82×75	Φ16 (C7)
					400W		1388						
	10				200W		340						
		400W	694	500	30	8							
20	200W	174											
		400W	347	1000	18	3							

※1 Max speed is based on a 3000 rpm servo motor; reduce speed if stroke >500 to prevent resonance.

⚠ Motor not included; customers must purchase separately. When the motor code is specified as Z, the motor shaft diameter and installation dimensions must be provided.

⚠ Motor acceleration and deceleration time is recommended to be set at 0.2 seconds or more.

Please follow the selection steps ①~⑥ select the model and parameters to order.

Order

Model(①Type) - ②Lead - ③Stroke S - ④Motor Direction - ⑤Motor Type - ⑥Number of Sensor
 E-ECRL8 - 05 - S100 - BM - P400W - C2

E-ECRL8 Stroke S		50	100	150	200	250	300	350	400	450	500	550	600	650	700	750	800
L	Direct connection	376	426	476	526	576	626	676	726	776	826	876	926	976	1026	1076	1126
	Parallel connection	359	409	459	509	559	609	659	709	759	809	859	909	959	1009	1059	1109
Mounting Dimension	A	50	100	50	100	50	100	50	100	50	100	50	100	50	100	50	100
	Number of Pitch*	1	1	2	2	3	3	4	4	5	5	6	6	7	7	8	8
	Number of Hole N*	6	6	8	8	10	10	12	12	14	14	16	16	18	18	20	20
Main Body mass(kg)	Direct connection	4.06	4.44	4.85	5.15	5.5	5.83	6.15	6.5	6.79	7.12	7.56	7.86	8.27	8.56	8.8	9.11
	Parallel connection	4.16	4.54	4.95	5.3	5.6	5.93	6.25	6.6	6.89	7.22	7.66	7.96	8.37	8.66	8.9	9.21

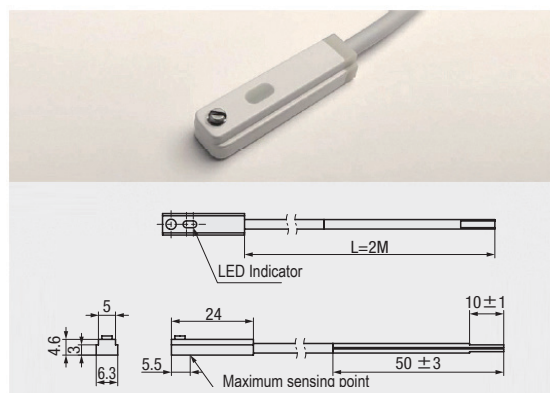
※ For parallel down fold installation, mounting holes decrease by 2, and pitch number by 1 due to motor interference.

Components

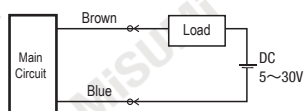
Component name		Type	200W			400W			Code	Brand
Direct Connection	Coupling	Disk Coupling Clamp Type	Outside diameter	Ball screw side	Motor side	Outside diameter	Ball screw side	Motor side	P	Panasonic
			Φ34	Φ10	Φ14(PanasonicΦ11)	Φ34	Φ10	Φ14		
Parallel connection	Ball screw pulley	Nickel Plating	3GT-41Teeth × Φ10			3GT-41Teeth × Φ10			M	Mitsubishi / Yaskawa / Delta / Siemens Inovance / Xinjie / Leadshine / Omron / HCFA
	Motor pulley	Steel	3GT-41Teeth × Φ14(PanasonicΦ11)			3GT-41Teeth × Φ14				
	Timing belt	Glass fiber core rubber	288-3GT-15			288-3GT-15			Z	Customized
Sensor (Optional)		DMSE-020-2M (DC 2-wire, Normal open)								

Motor Code and Brand

E-ECRL Sensor Specification

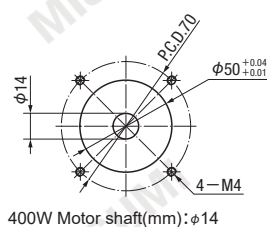
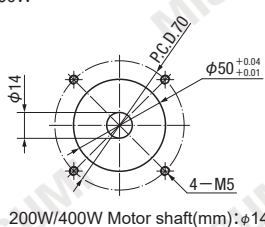
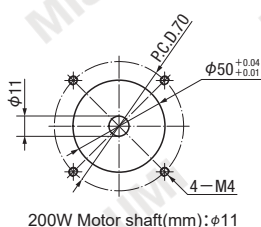


Sensor Wiring Diagram



Motor Mounting Hole Dimension

M200W ·



How to search on website

Method 1 Search on MISUMI official website

Type: E-ECRL8

Method 2 Step 1 Search on MISUMI official website

Keyword: Electric Cylinder

Step 2 Select MISUMI economy series brand

MISUMI MISUMI economy



MISUMI

economy Electric Cylinder Radial Type E-ECRL10

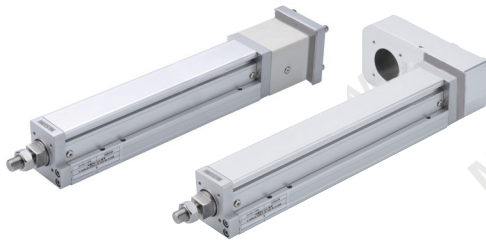
Representative model : E-ECRL10-05-S100-BC-P750W-C0

10,987,429

8,789,943

Sold from 1 pc
VND/pc

From 10 pcs
VND/pc



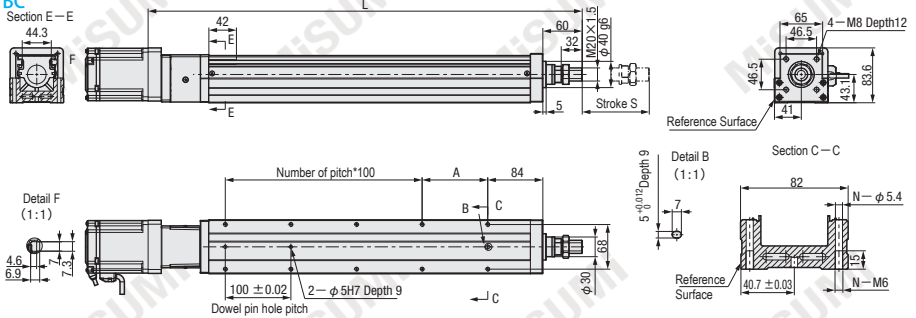
Quantity	Unit Price	Discount	Day To Ship
1	10,987,429	-	15
10	8,789,943	20%	18



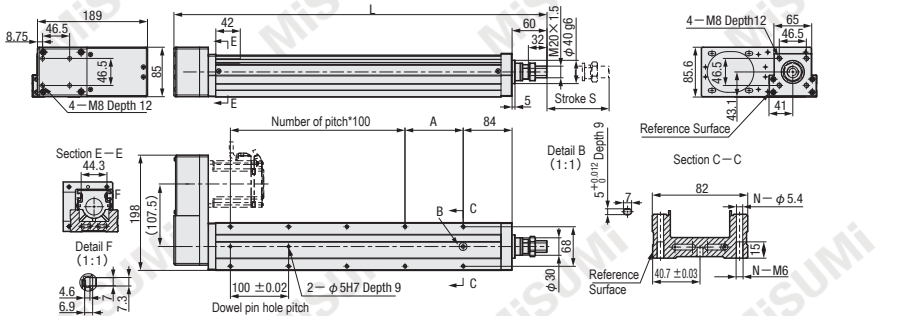
If the desired quantity exceeds the above, please contact us for delivery time.
The actual shipping date is based on the date displayed on the web at the time of ordering.

Components	Base	Cover	Built-in Linear Guide	Slide Block	Push Rod	Motor Bracket
Material	Aluminum Alloy	Aluminum Alloy	Stainless Steel	Aluminum Alloy	S45C	Aluminum Alloy
Surface Treatment	Clear Anodized	Clear Anodized	-	Clear Anodized	Chrome Plating	Clear Anodized

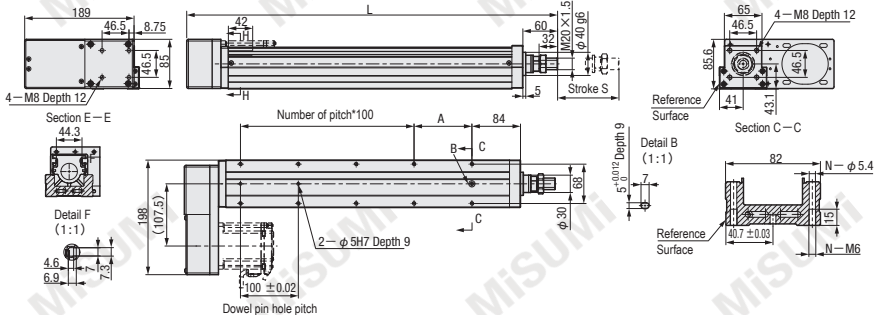
Motor Direct Connection BC



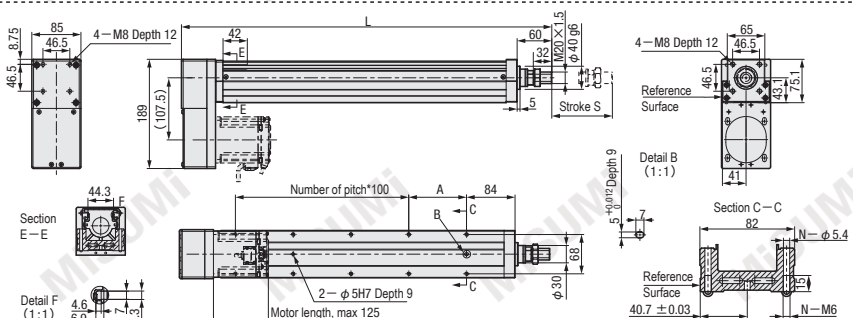
Motor Parallel Left Fold Connection BL



Motor Parallel Right Fold Connection BR



Motor Parallel Down Fold Connection BM



Model		Stroke S 50mm Increment	Motor Direction	Motor Type		Number of Sensor	Rated Thrust (N)	Max Speed (mm/s) ^{※1}	Max. Payload(kg)		Positioning Repeatability (mm)	Body Width	Ball Screw
Type	Lead (mm)			Brand	Power W				Horizontal	Vertical			
E-ECRL10	05	50~800	BC(Direct connection) BL(Parallel Left Fold) BR(Parallel Right Fold) BM(Parallel Down Fold)	P(Panasonic) M(Motor table) Z(Customized)	750W	C0(Not Provided) C1(1 pc) C2(2 pcs) C3(3 pcs)	2550	250	110	33	±0.01	82×86	Φ16 (C7)
	10								88	22			
	20								40	10			

※1 Max speed is based on a 3000 rpm servo motor; reduce speed if stroke >500 to prevent resonance.

Ⓜ Motor not included; customers must purchase separately. When the motor code is specified as Z, the motor shaft diameter and installation dimensions must be provided.

Ⓜ Motor acceleration and deceleration time is recommended to be set at 0.2 seconds or more.

Order

Please follow the selection steps ①~⑥ select the model and parameters to order.

Model(①Type) - ②Lead - ③Stroke S - ④Motor Direction - ⑤Motor Type - ⑥Number of Sensor
 E-ECRL10 - 05 - S100 - BM - P750W - C3

E-ECRL10 Stroke S		50	100	150	200	250	300	350	400	450	500	550	600	650	700	750	800
L	Direct connection	412	462	512	562	612	662	712	762	812	862	912	962	1012	1062	1112	1162
	Parallel connection	391	441	491	541	591	641	691	741	791	841	891	941	991	1041	1091	1141
Mounting Dimension	A	50	100	50	100	50	100	50	100	50	100	50	100	50	100	50	100
	Number of Pitch [※]	1	1	2	2	3	3	4	4	5	5	6	6	7	7	8	8
	Number of Hole N [※]	6	6	8	8	10	10	12	12	14	14	16	16	18	18	20	20
Main Body mass(kg)	Direct connection	4.91	5.29	5.7	6	6.35	6.68	7	7.35	7.64	7.97	8.41	8.71	9.12	9.41	9.65	9.96
	Parallel connection	6.13	6.51	6.92	7.27	7.57	7.9	8.22	8.57	8.86	9.19	9.63	9.93	10.34	10.63	10.87	11.18

※For parallel down fold installation, mounting holes decrease by 2, and pitch number by 1 due to motor interference.

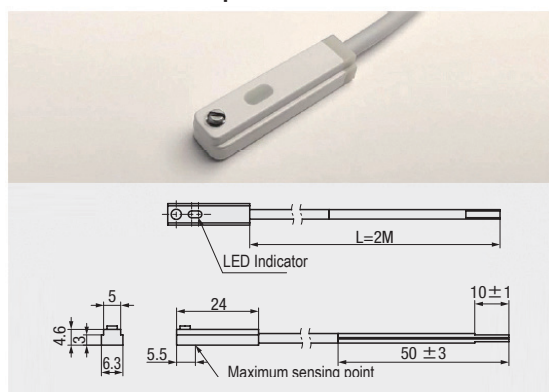
Components

Component name		Type	750W		
Direct Connection	Coupling	Disk coupling clamp type	Outside diameter	Ball screw side	Motor side
			Φ39	Φ10	Φ19
Parallel connection	Ball screw pulley	Black oxide steel	5GT-25Teeth×Φ12		
	Motor pulley		5GT-25Teeth×Φ19		
	Timing belt	Glass fiber core rubber	340-5GT-15		
Sensor (Optional)		DMSE-020-2M (DC 2-wire, Normal open)			

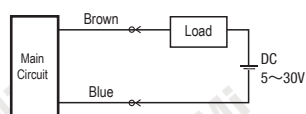
Motor Code and Brand

Code	Brand
P	Panasonic
M	Mitsubishi / Yaskawa / Delta / Siemens Inovance / Xinjie / Leadshine / Omron / HCFA
Z	Customized

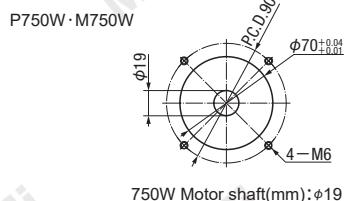
E-ECRL Sensor Specification



Sensor Wiring Diagram



Motor Mounting Hole Dimension



How to search on website

Method 1 Search on MISUMI official website

Type

Method 2 Step 1 Search on MISUMI official website

Keyword

Step 2 Select MISUMI economy series brand

MISUMI MISUMI economy